

ARCH1101 EXP2

**THE SPACE
BETWEEN**

RUSSELL LOWE

THE BRIEF FOR EXPERIMENT 2

THE CONCEPT

THE TOOLS

THE FORM: THE HOLE, THE BOWL, THE ADDITION

THE AXONOMETRIC

STUDENT WORK

CryENGINE3 DEMO

THE BRIEF



Roanna Manlutac: Adolf Loos and Sou Fujimoto

Jeremy Harkins: Archigram and Winka Dubbeldam

Jackey Yuen: Daniel Libeskind and Hans Scharon

Jo An Kok: Toyo Ito and Carlo Scarpa

Rosmaond Kember: Neri Oxman and Erich Mendelsohn.

Rikke Bukh: Dorthe Mandrup-Poulsen and Karen Clemmensen

Stephen Davey: Kazuyo Sejima and Kenzo Tange

Vinh Nguyen: Luis Barragan and Farshid Moussavi

Matt Day: Frank Lloyd Wright and Aires Mateus

Brad Inwood: Charles Mackintosh and Ken Yeang

James Pedersen: Filippo Brunelleschi and Peter Zumpthor

Shaowen Wang: Yakov Chernikhov and Weiss/Manfredi.

Andrea Harrison: Zaha Hadid and Norma Merrick Sklarek

THE ARCHITECTS

Wordnet: defines 'concept' as a "conception, construct (an abstract or general idea inferred or derived from specific instances)".^[1]

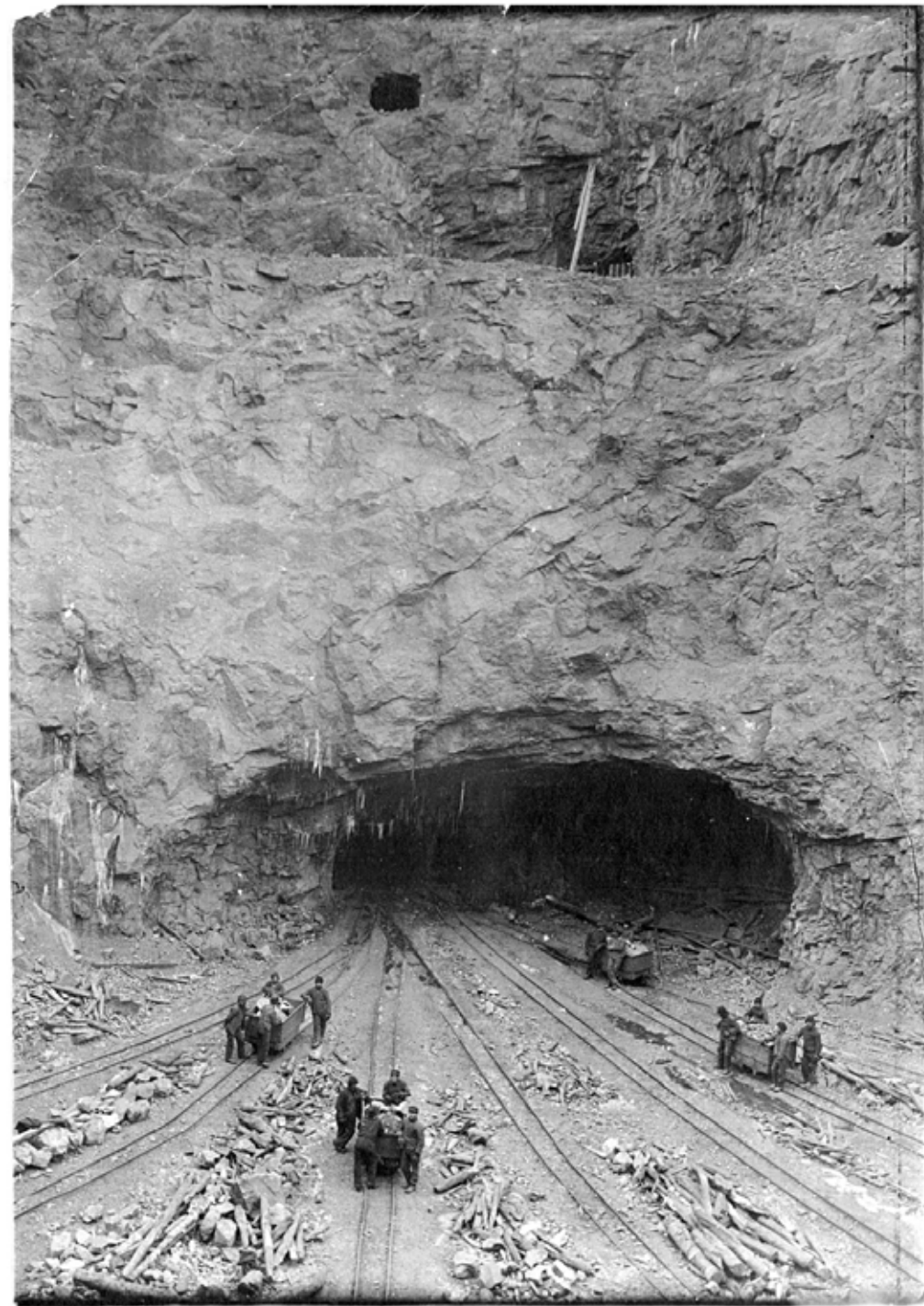
THE CONCEPT

THE TOOLS



THE FORM

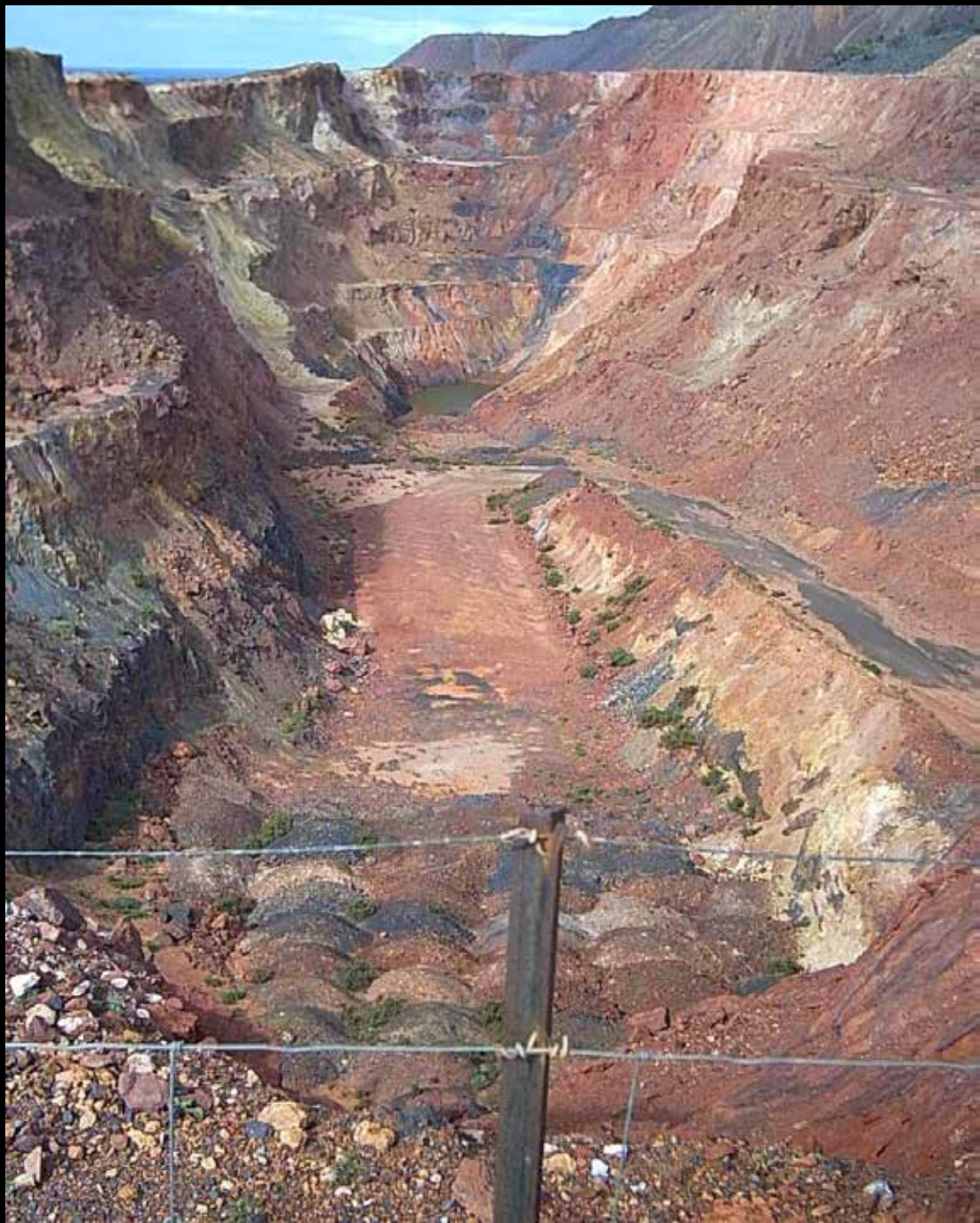
1. THE HOLE







AIR RECEIVER 2
Design Registration Number: WAF1604
Date of Registration: 25 February 2005

















MICHAEL HEIZER

2. THE BOWL





SKATE BOWL DOCUMENTARY

3. THE ADDITION



MICHAEL HEIZER



MICHAEL HEIZER



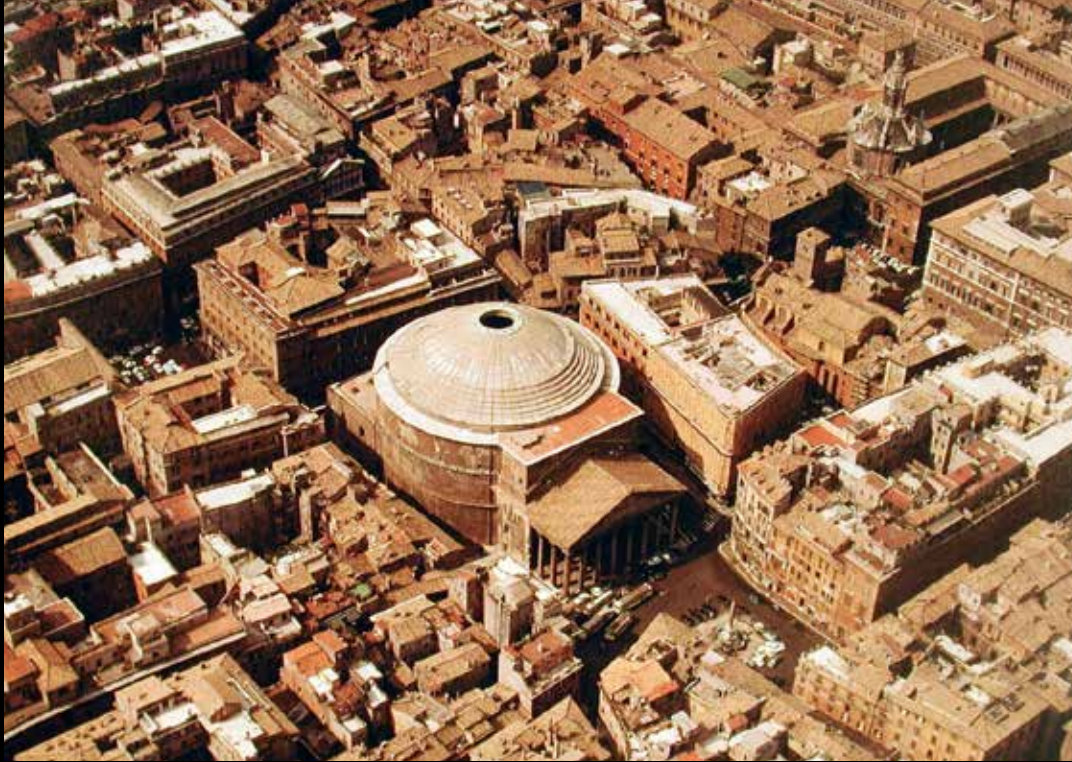








JAMES CORNER



PANTHEON. ROME.



EDWARD BURTYNSKY



EDWARD BURTYNSKY

EDUARDO CHILLIDA





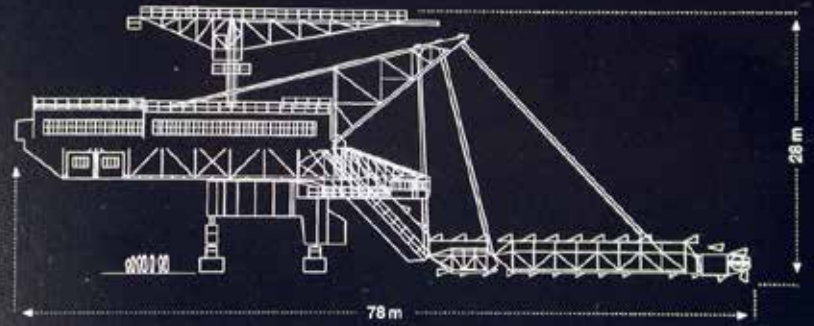




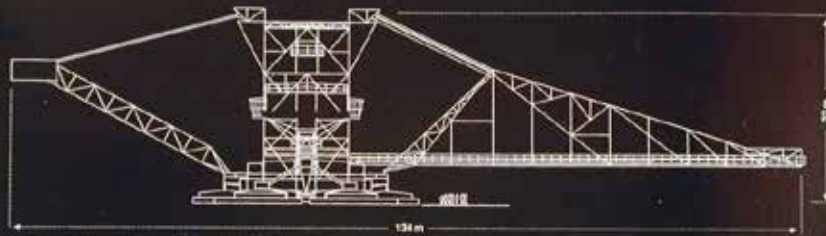
Big Wheel



Mad Max

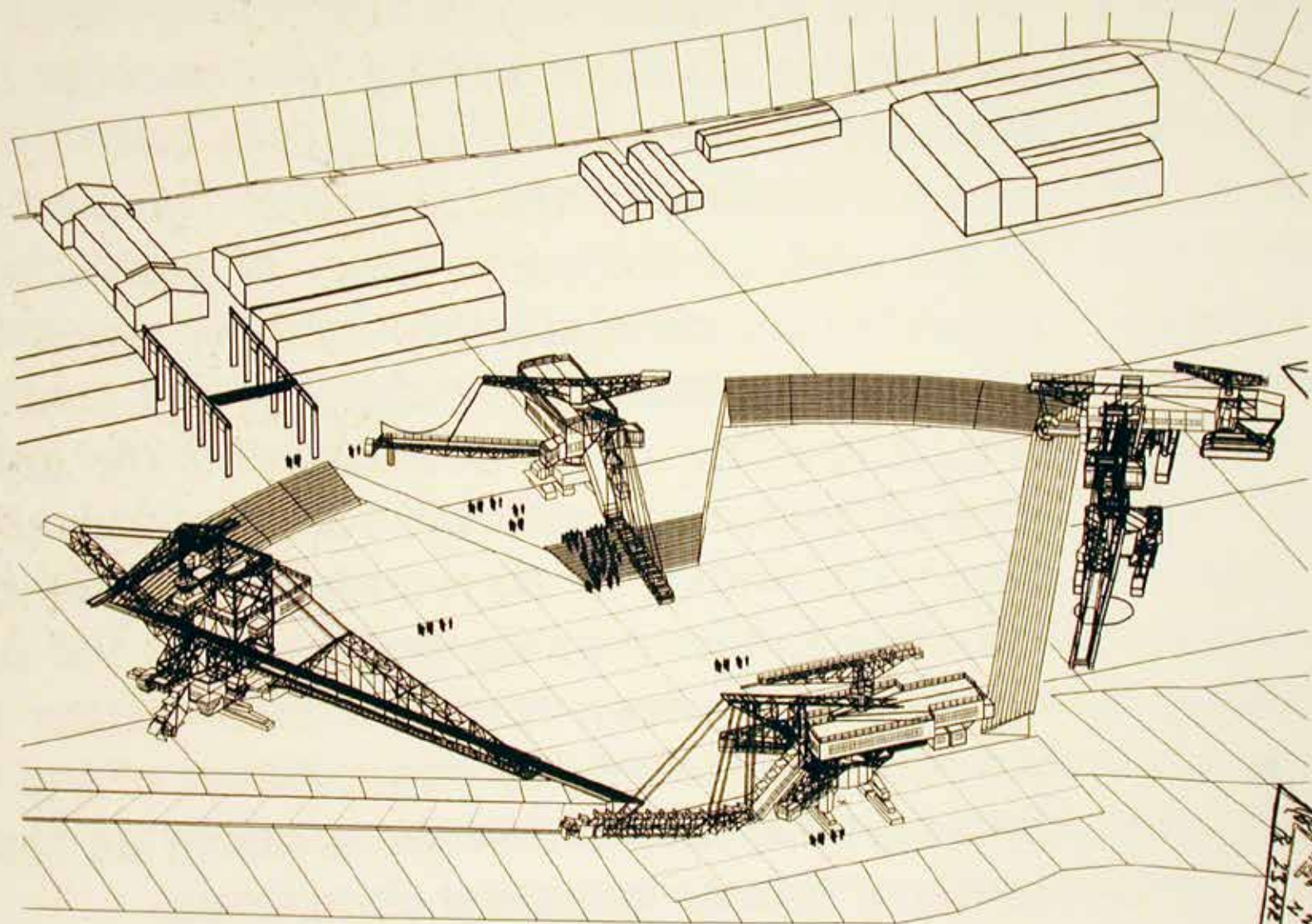


Medusa

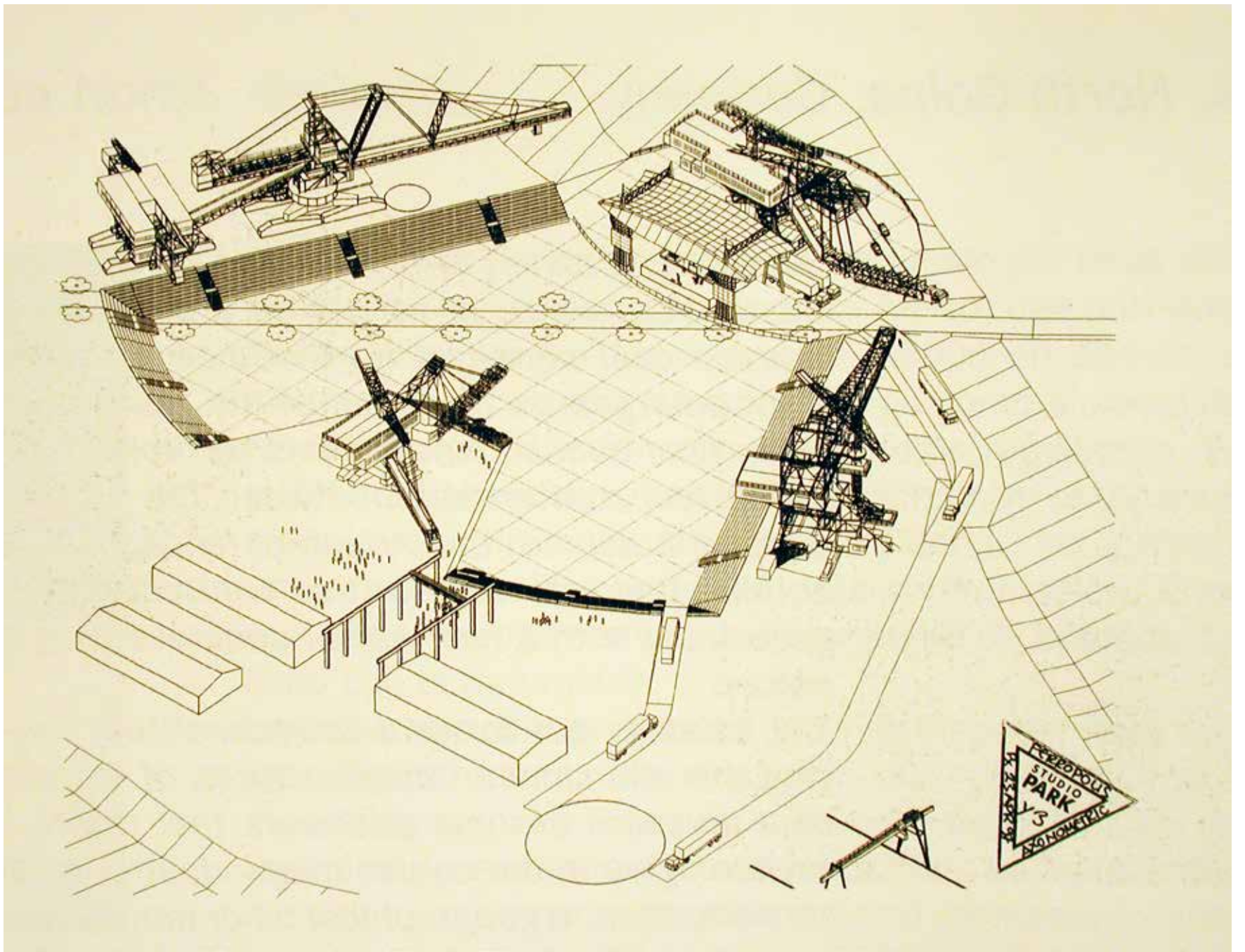


Gemini





REARBY'S
STUDIO
PARK
#2
AXONOMETRIC







TWO CONCEPTS



The Truffle is a piece of nature built with earth, full of air. A space within a stone that sits on the ground and blends with the territory. It camouflages, by emulating the processes of mineral formation in its structure, and integrates with the natural environment, complying with its laws.

ENSAMBLE STUDIO



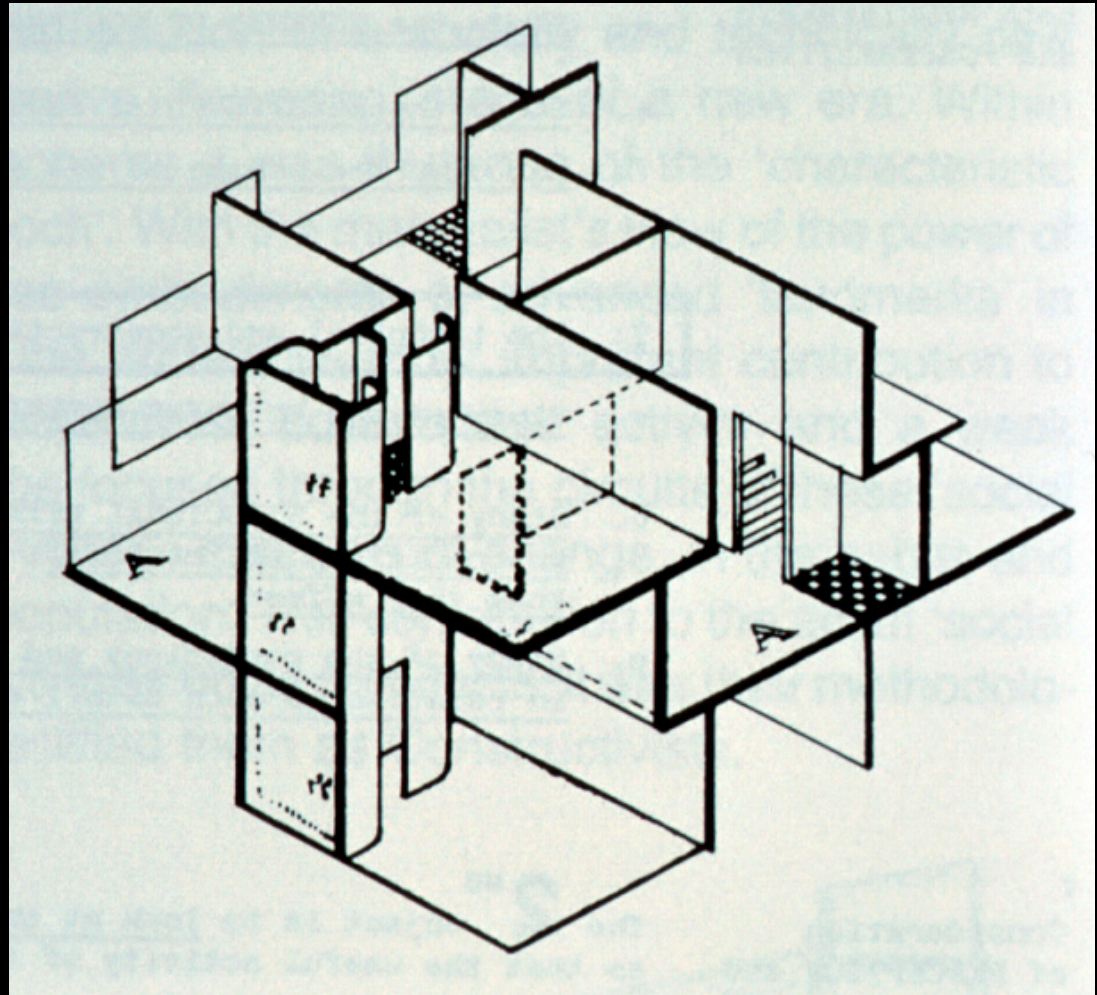
Hemeroscopium is for the Greek the place where the sun sets, an allusion to a place that exists only in our mind, in our senses. It is constantly moving and mutable, but is nonetheless real. It is enclosed, delimited and suggested by the horizon, though it is defined by light and only takes place in a precise moment of time.

ENSAMBLE STUDIO

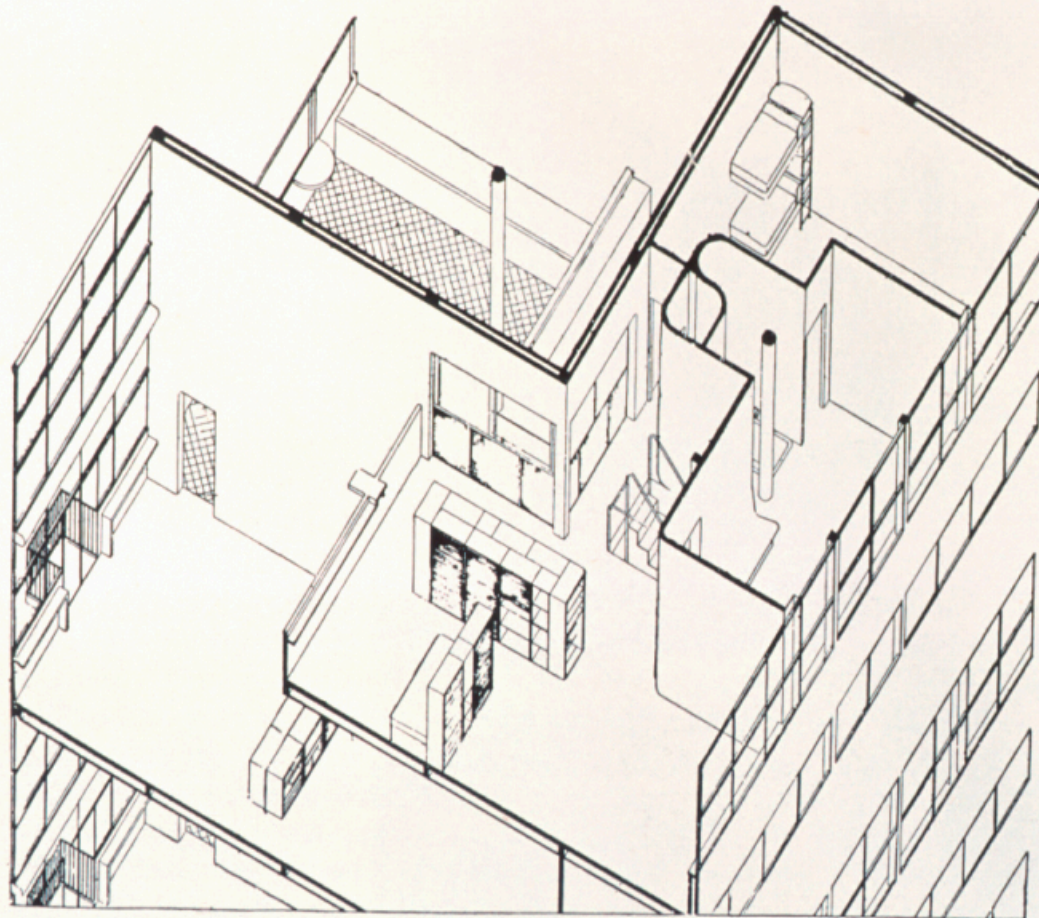
PARALLEL
PROJECTION
AXONOMETRIC
ISOMETRIC



PERSPECTIVE [ONE POINT]



PARALLEL PROJECTION [ISOMETRIC]



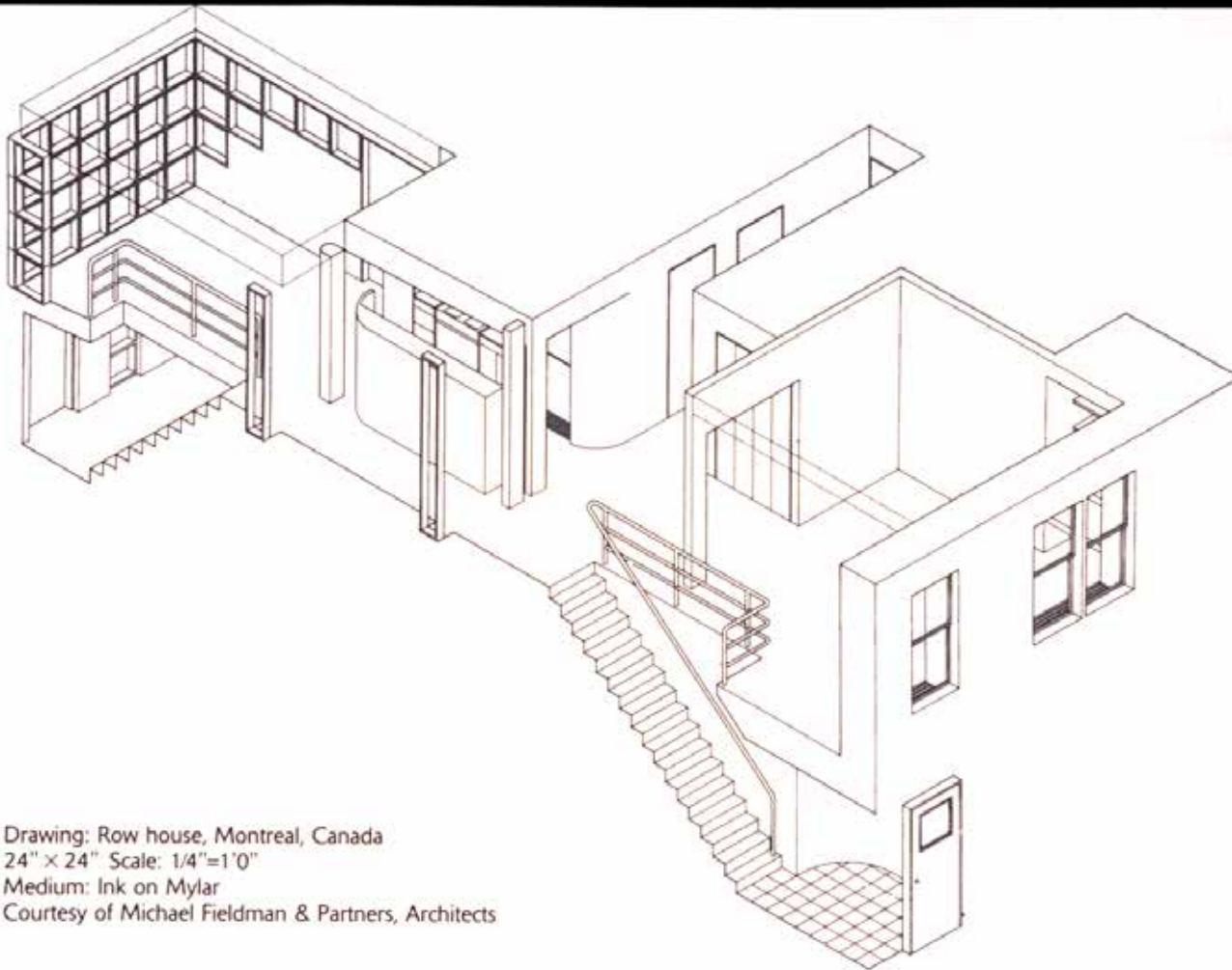
Le Corbusier und Pierre Jeanneret:

axonometric cons

The extent to
the “meta-design”
presented through
Ludwig Hilberseim
reorganization and
pedestrian traffic, p
is icastically summe
not attempt to inf
principle. In fact, t
cago.²² The drawing
effect of reality ha
servient to the prin
of fixtures are indic
the figure, which c
sample. In order to
axonometry still fu
the figure. But the
drawing, of a variat
perimpression acts a
employed to susper

Just how far the
pective and to axon
in the case of Hilber
ing at the bottom rig
“Hochhausstadt” wh

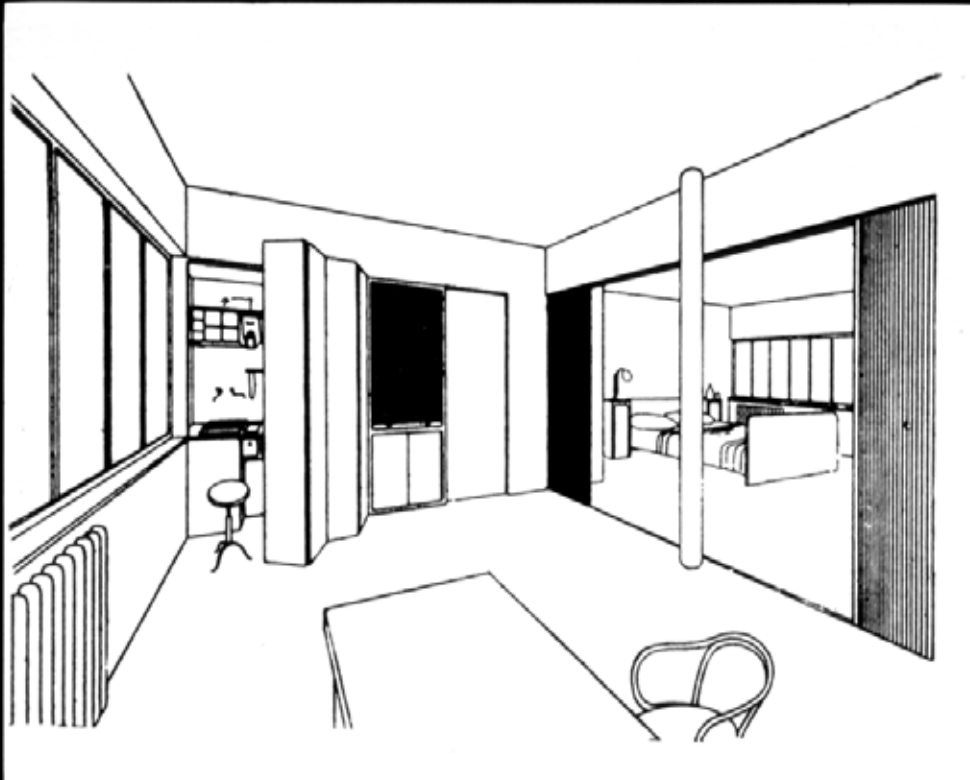
AXONOMETRIC [USUALLY ROTATED BY 45 DEGREES AND USES PLAN DIRECTLY]



Drawing: Row house, Montreal, Canada
24" x 24" Scale: 1/4"=1'0"
Medium: Ink on Mylar
Courtesy of Michael Fieldman & Partners, Architects

AIRWAYS

ISOMETRIC [USUALLY 30 DEGREES IN BOTH DIRECTIONS OFF BASELINE AND MUST REDRAW PLAN]

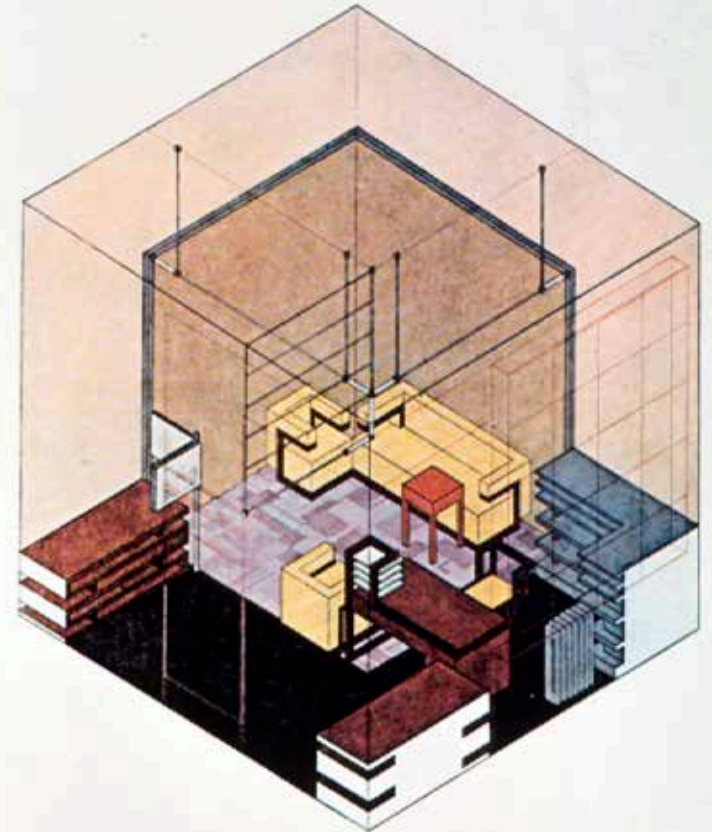


PERSPECTIVE [TWO POINT]

ästhetischer und theosophischer Erwägungen
 zur Axonometrie.⁶
 vorangestellten Zitat: Wenn man, wie Bruno
 Axonometrie tatsächlich als „symbolische

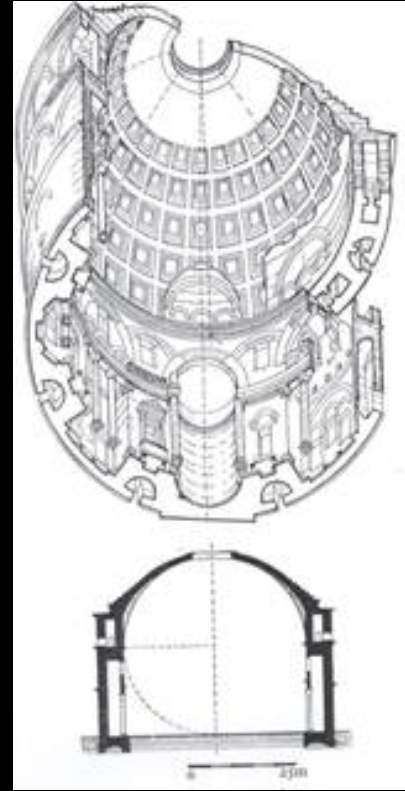
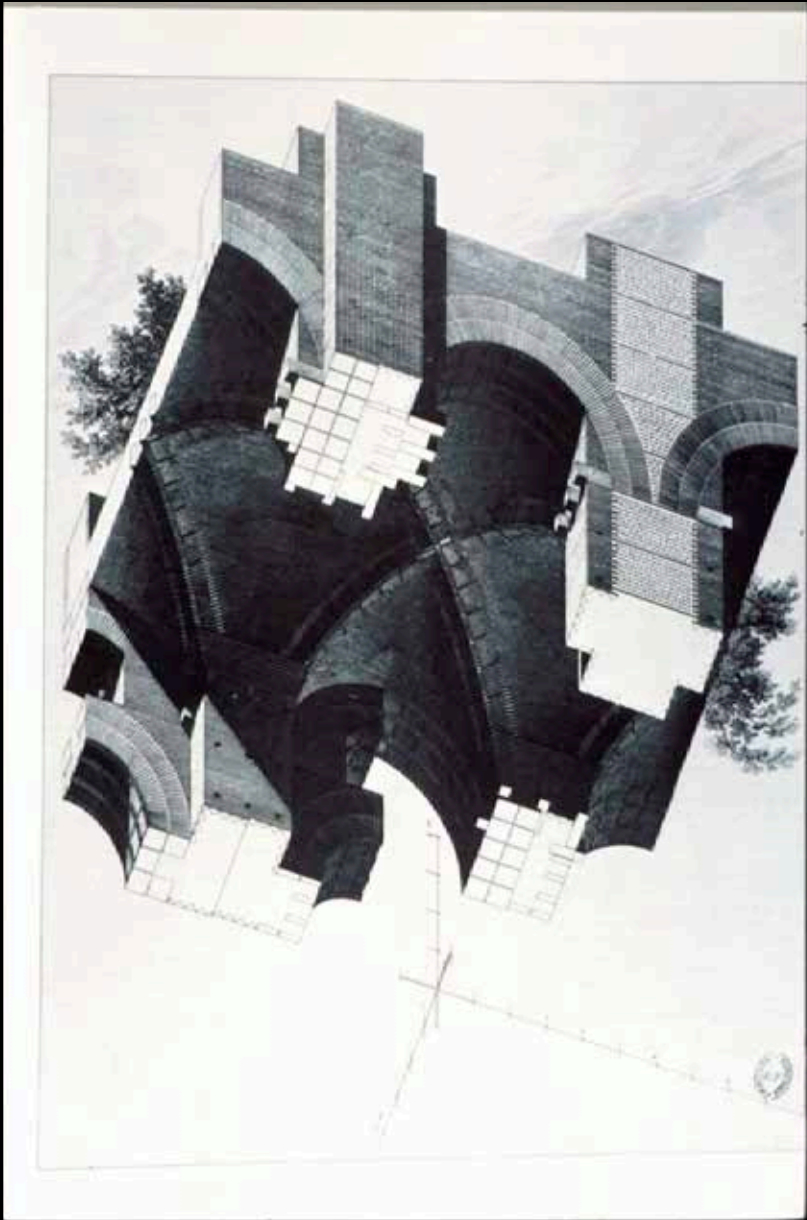
axonometry grew out of his occult and
 dimension.⁷

Bragdon's enthusiasm makes it quite
 indeed, as Bruno Reichlin suggests, seen

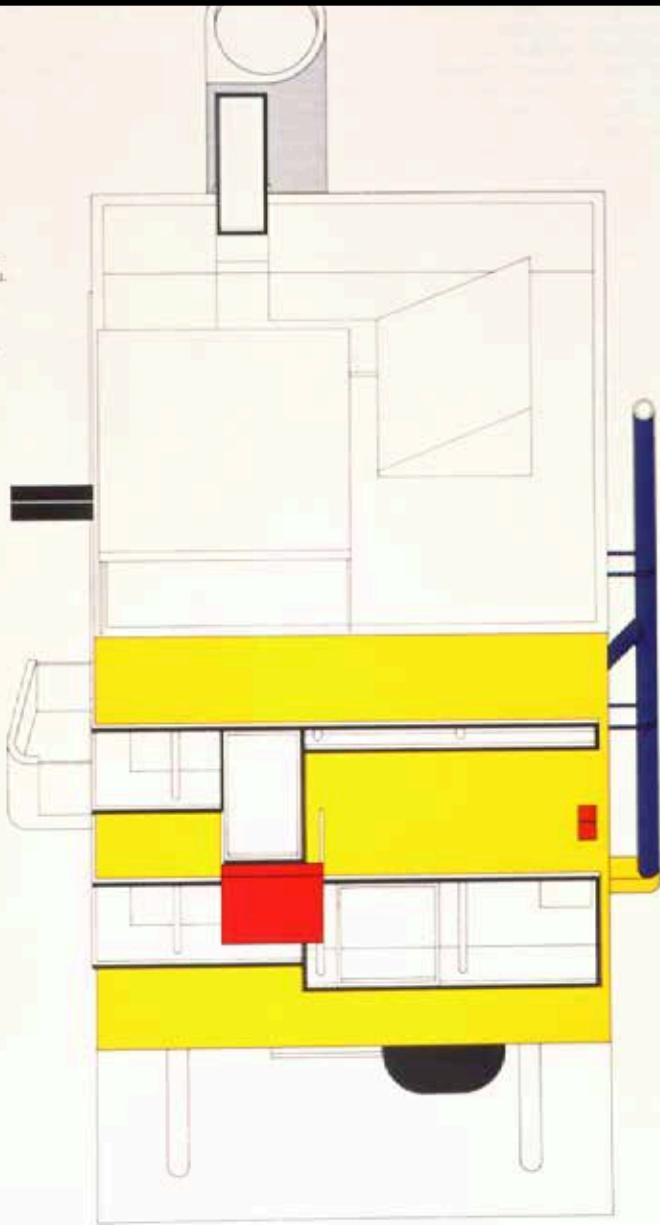


Herbert Bayer
 Das Atelier Walter Gropius im Bauhaus Weimar,
 1923, Isometric

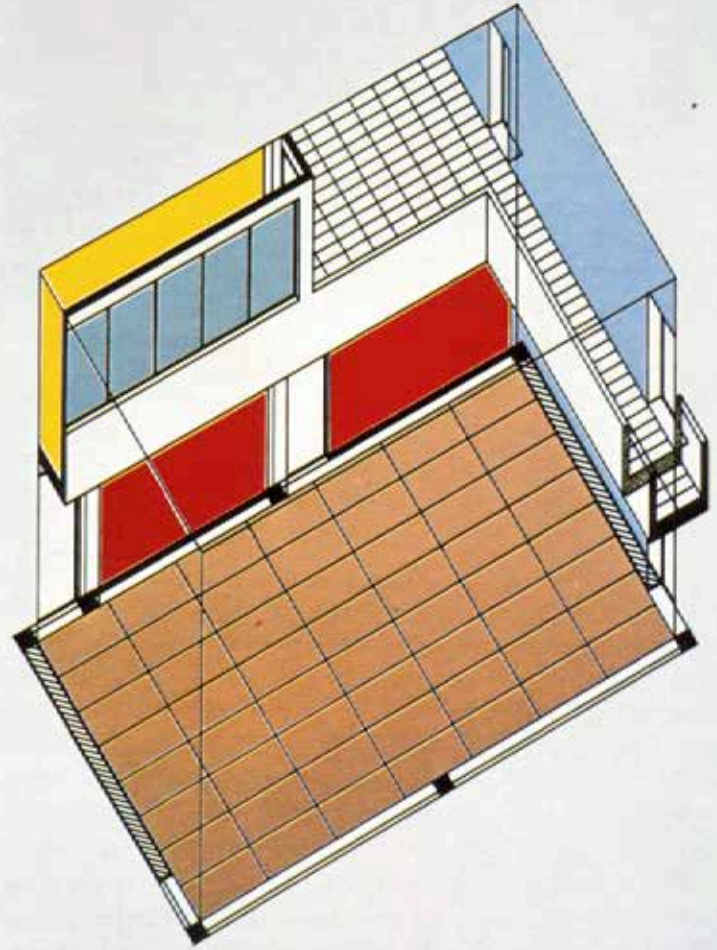
Herbert Bayer:
 The office of Walter Gropius at the "Bauhaus"
 1923, Isometry

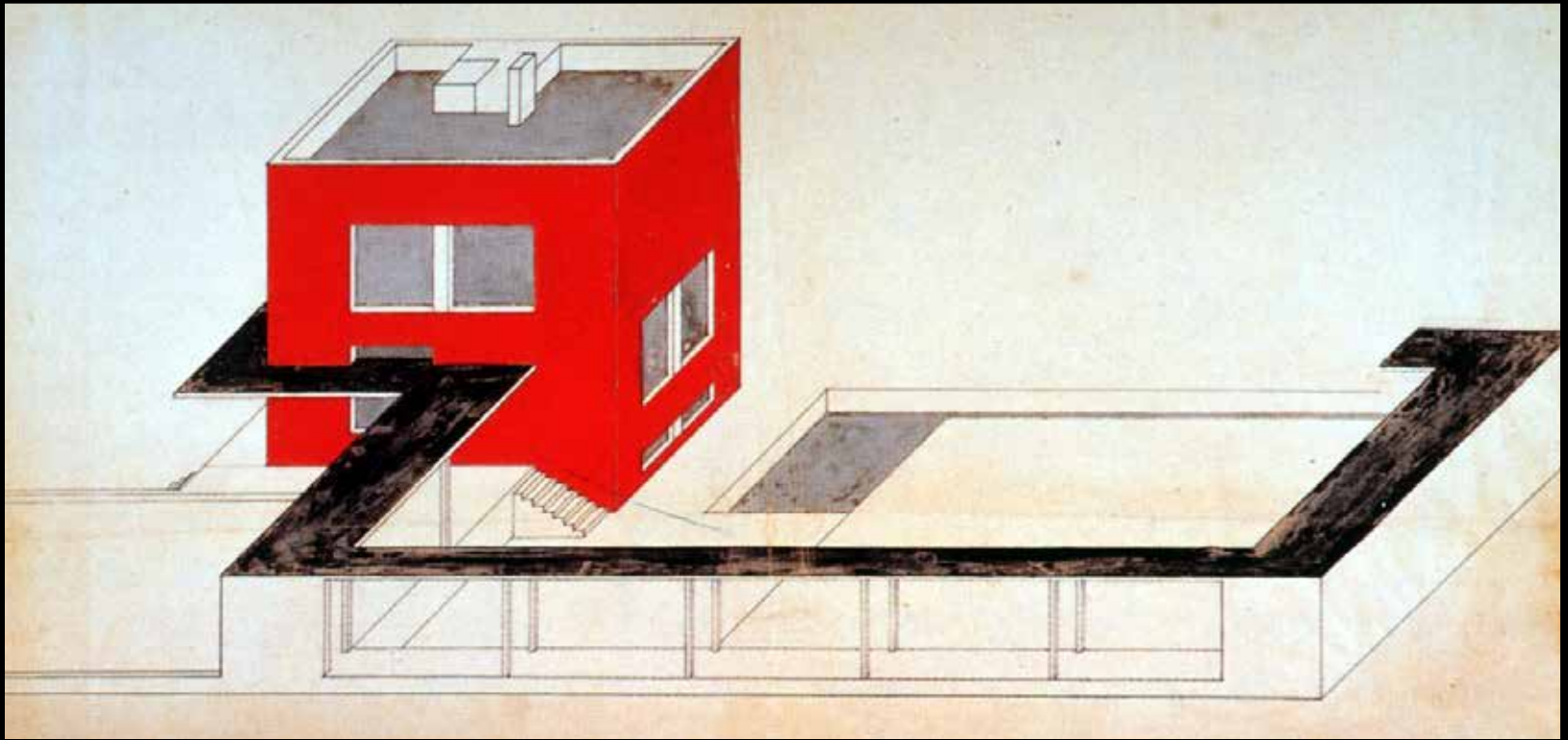


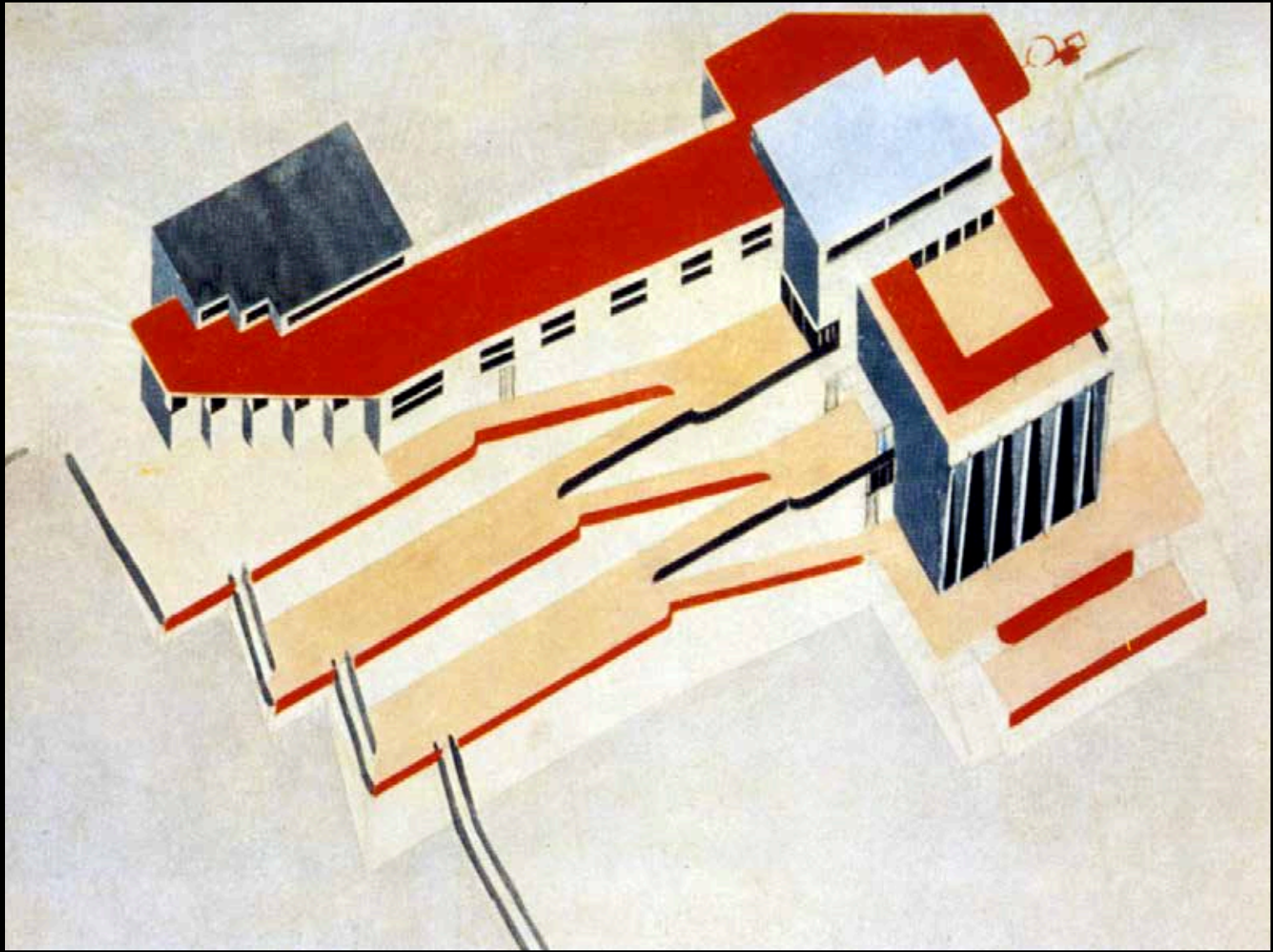
n House, 1968.
for projection.
in Primärfarben -
schwarz, Weiß, Grau.
or primaries -
black, white, gray.

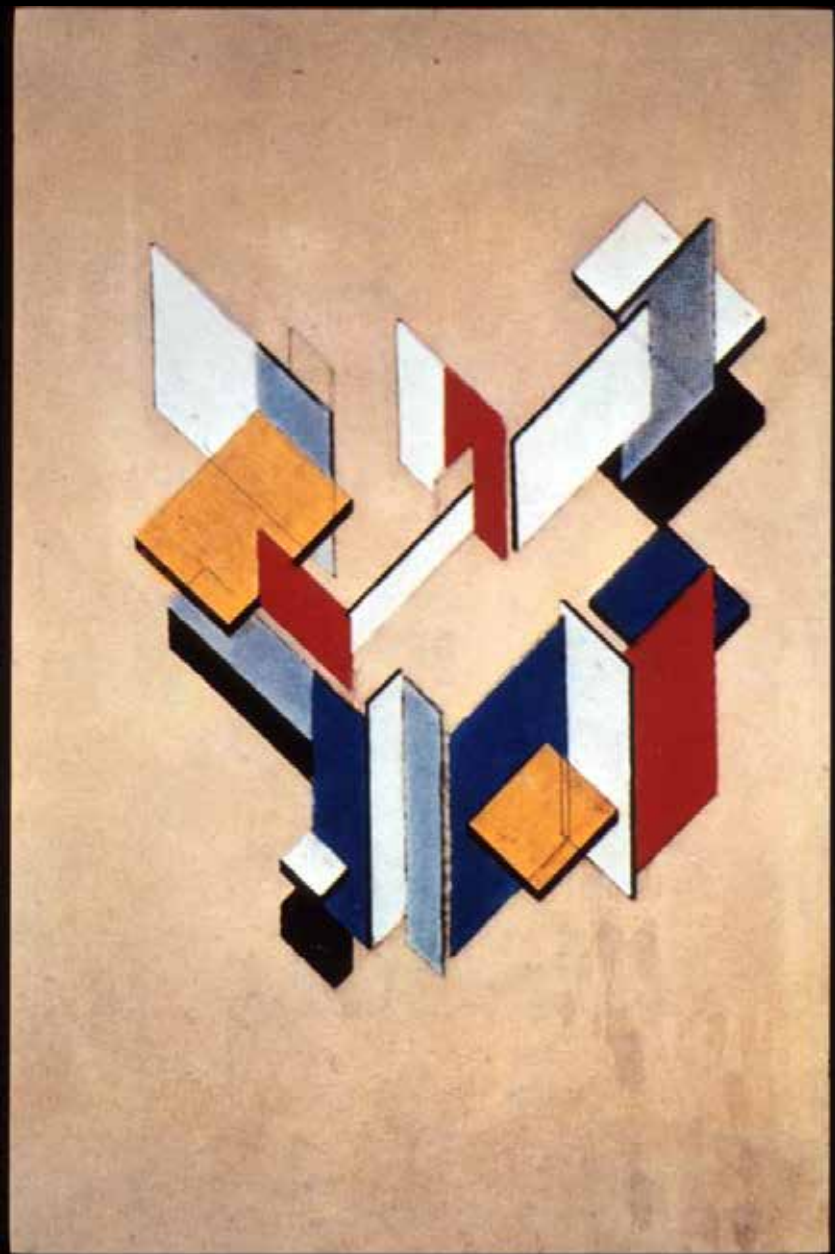
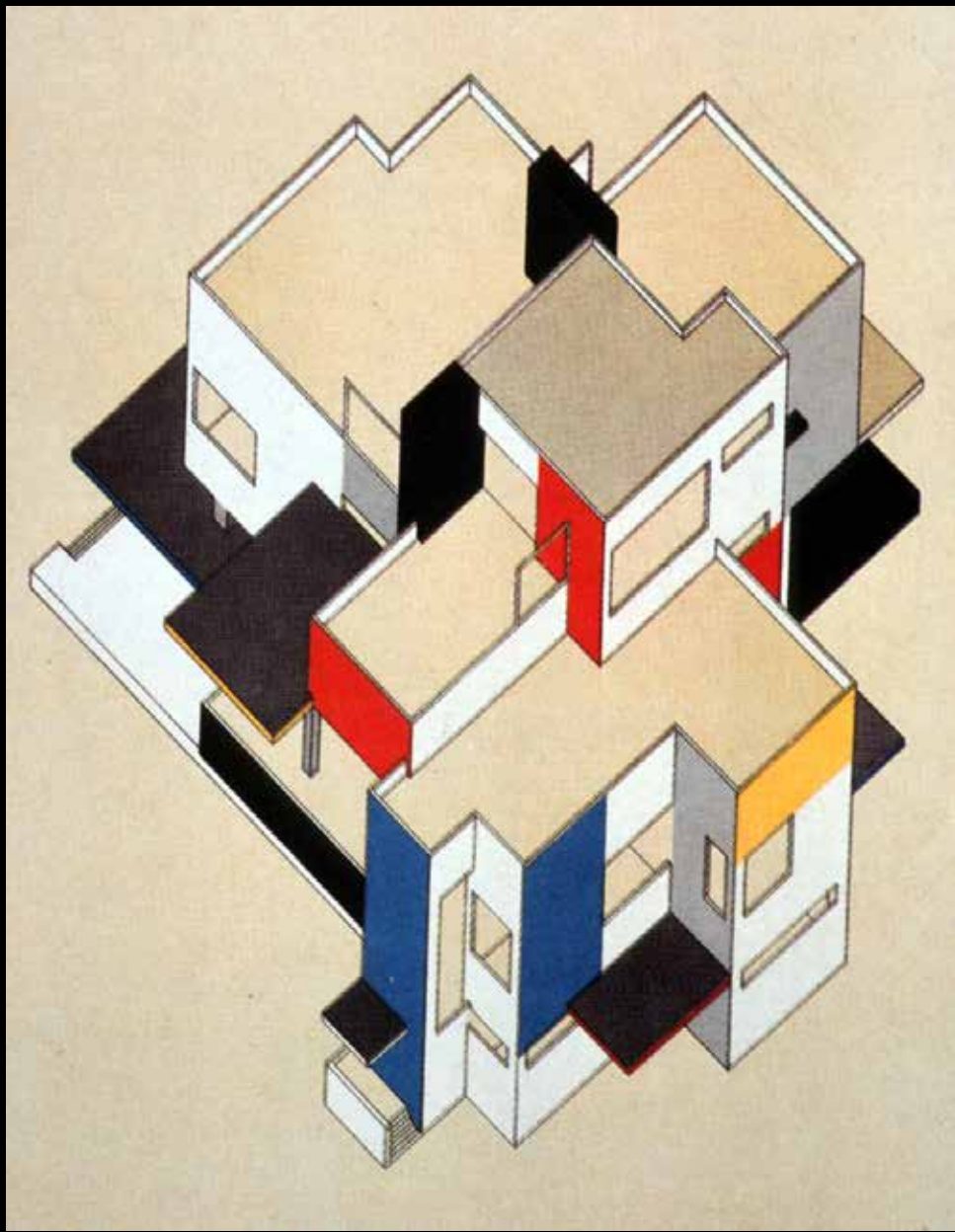


berto Sartoris.
udio in the ideal house of
e architect in Florence, 1942.





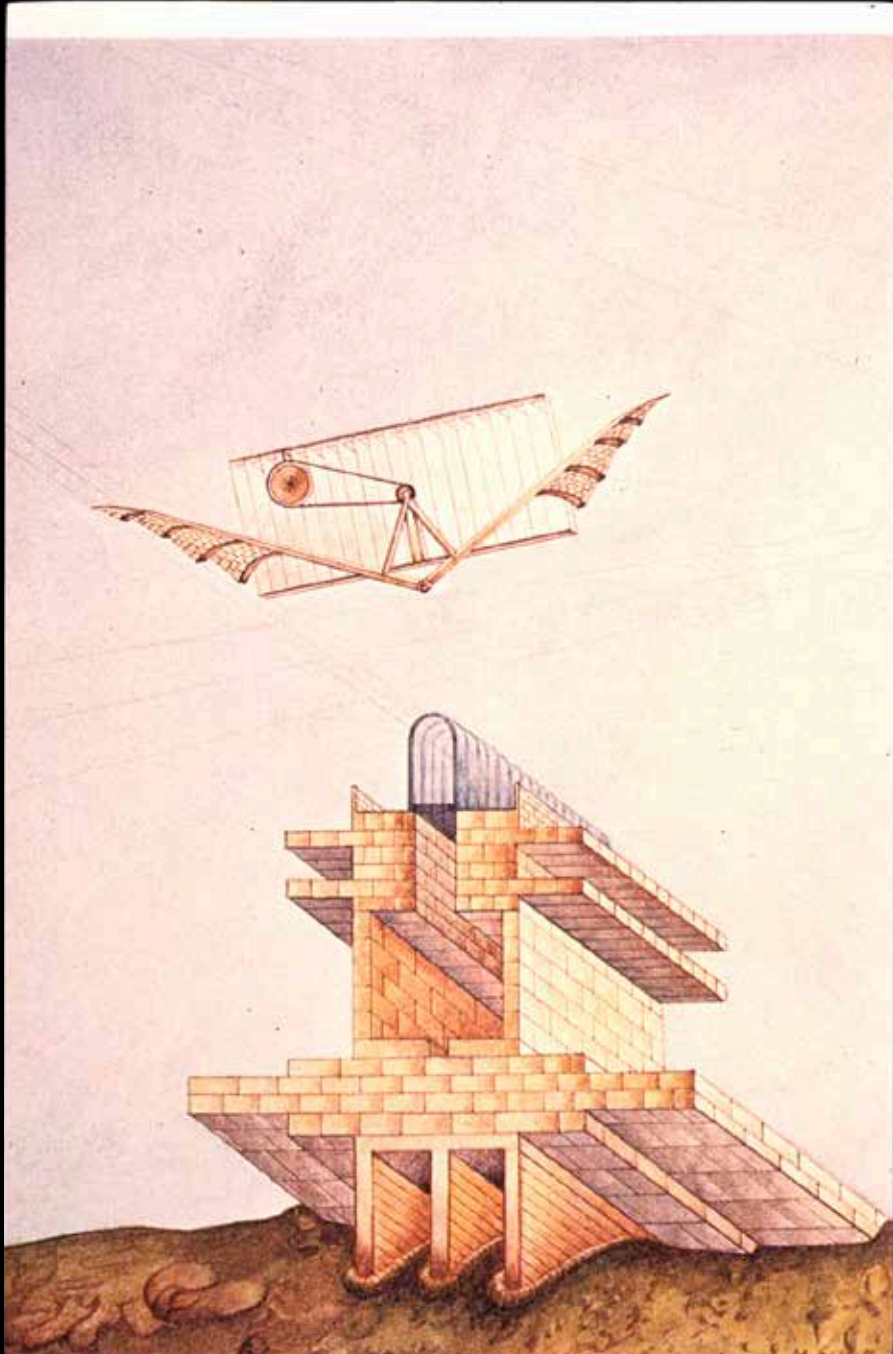




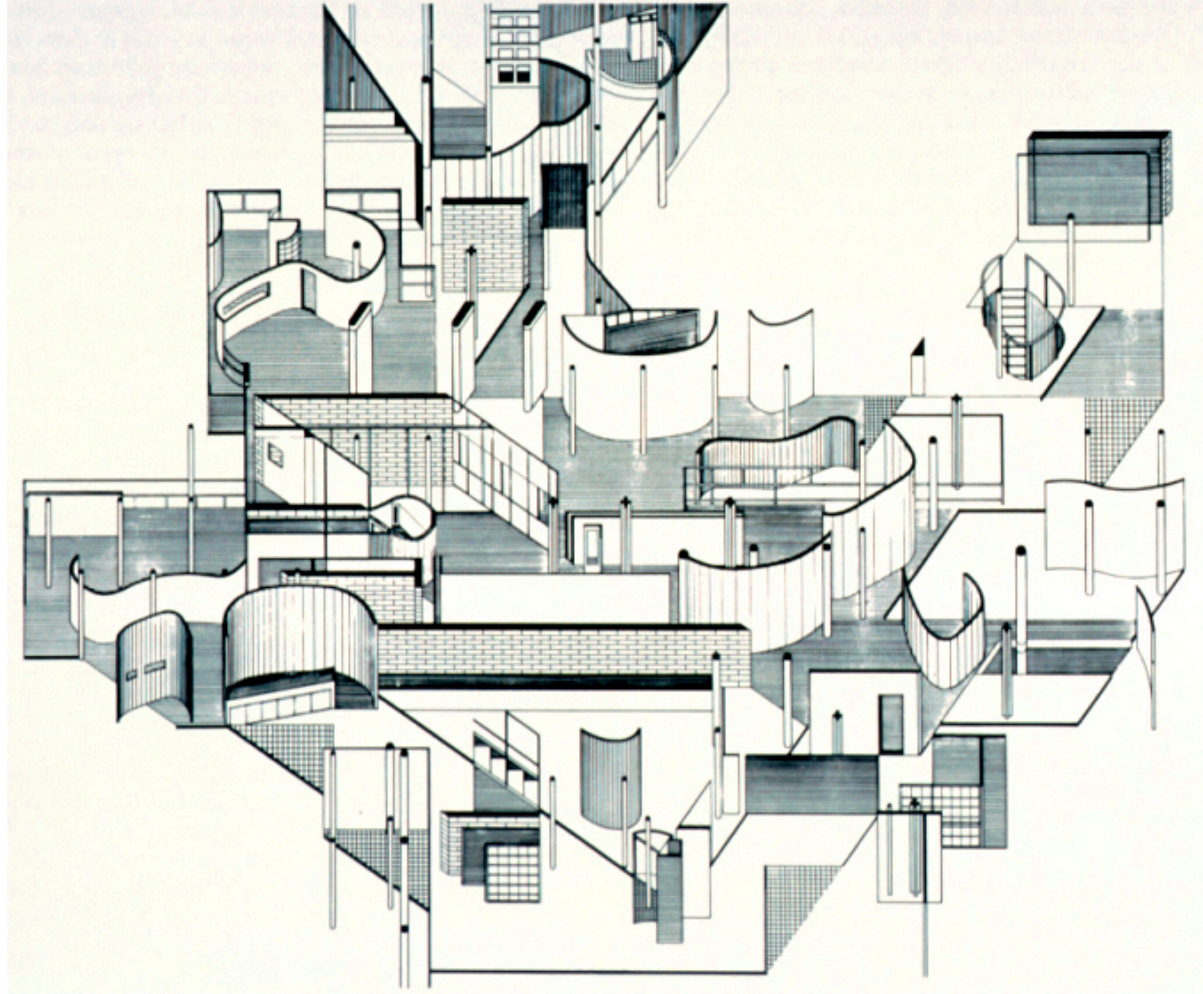
THEO VAN DOESBURG. DER STIJL.



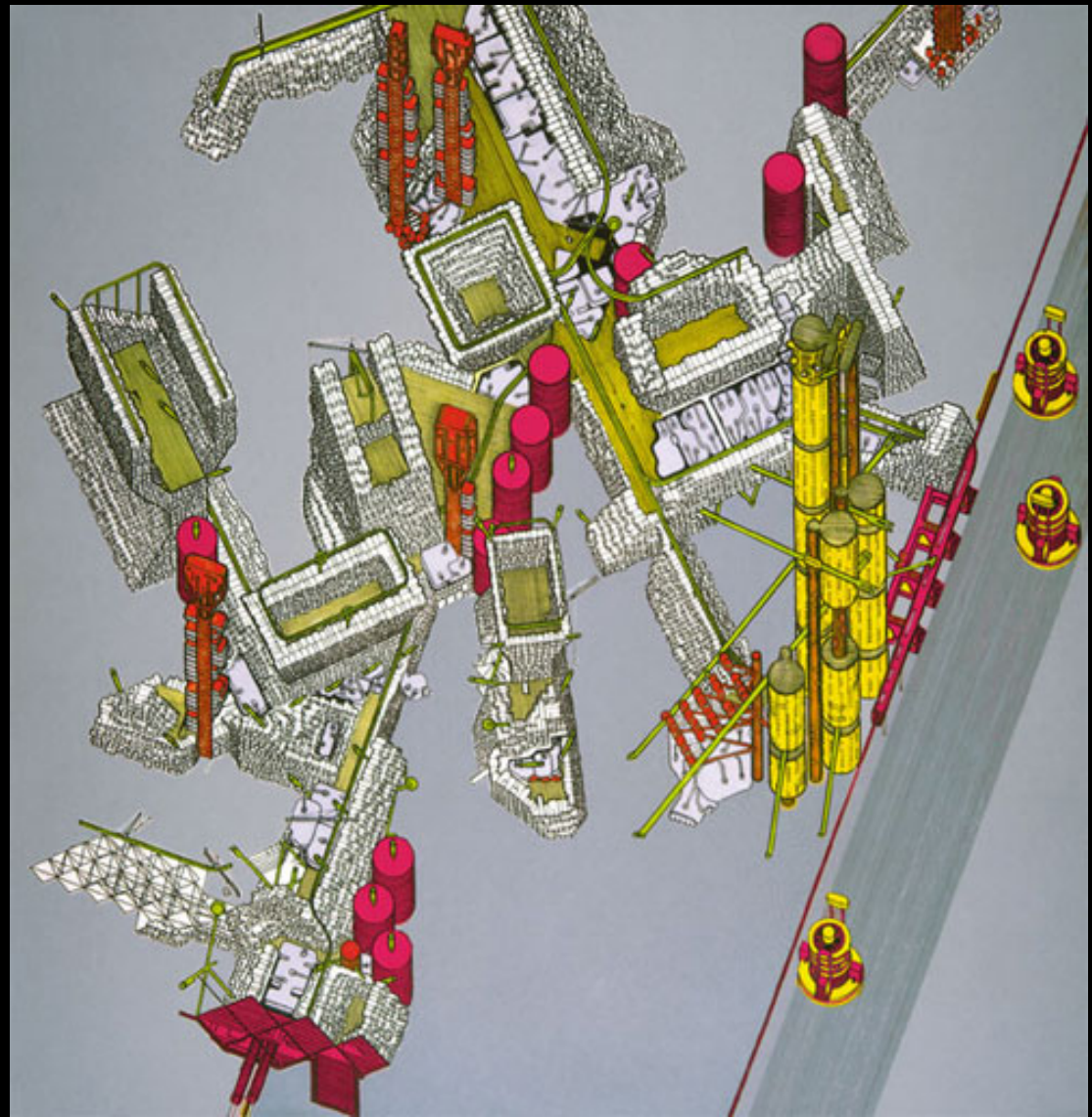
MASSIMO SCOLARI



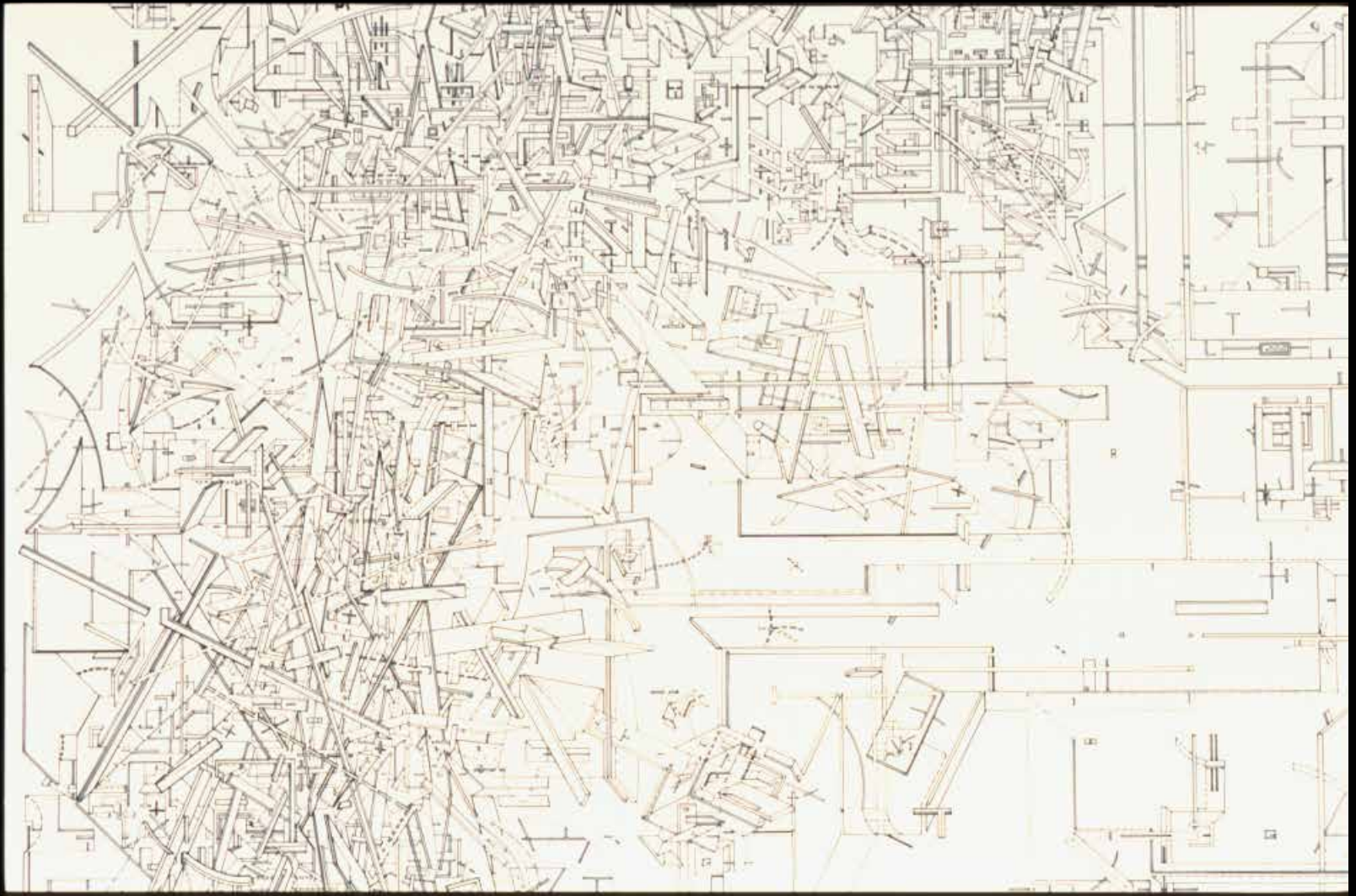
Daniel Libeskind:
Collage Rebus II, 1970.
Axonometric/Axonometric Crystal



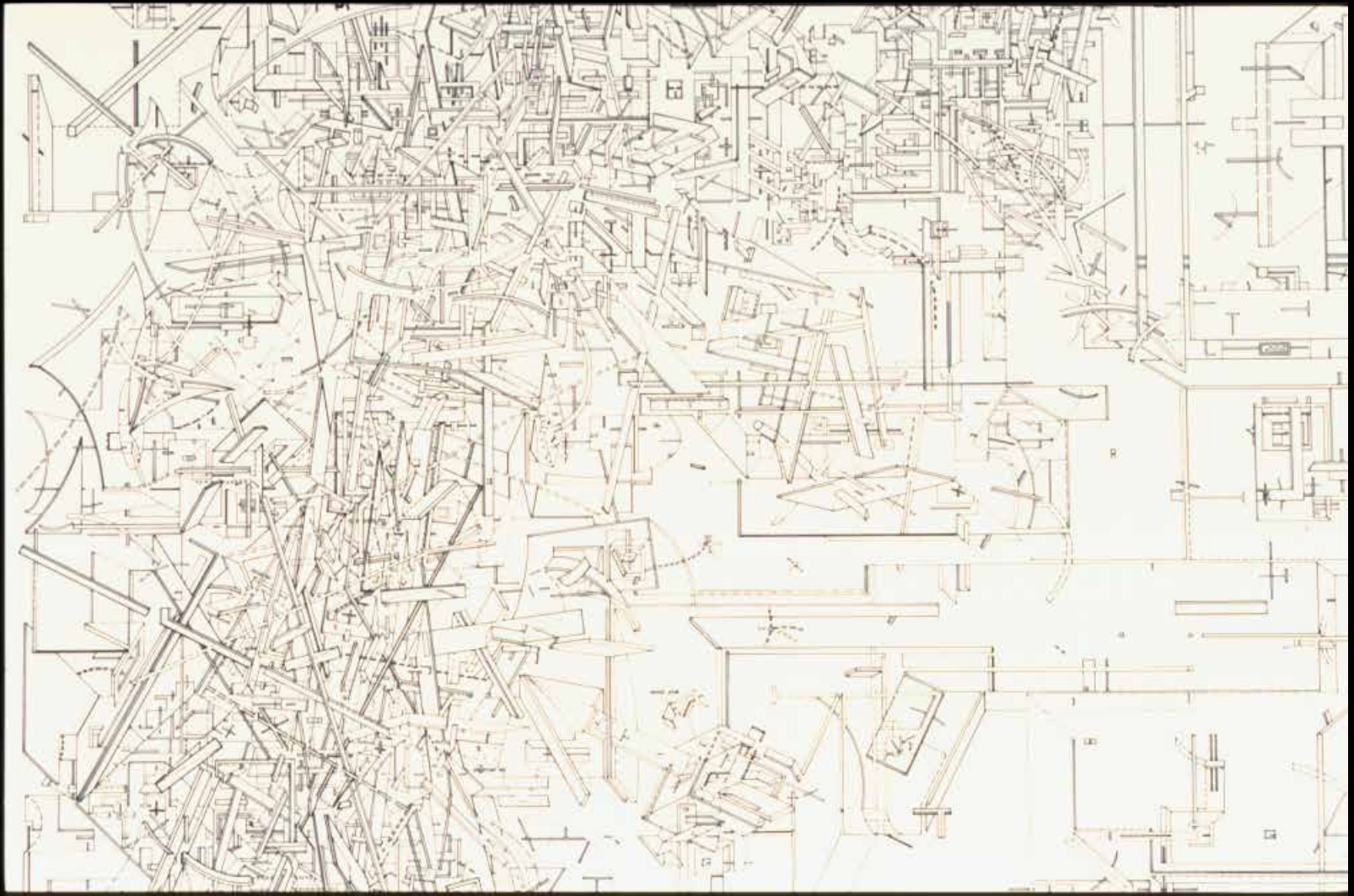
DANIEL LIBESKIND



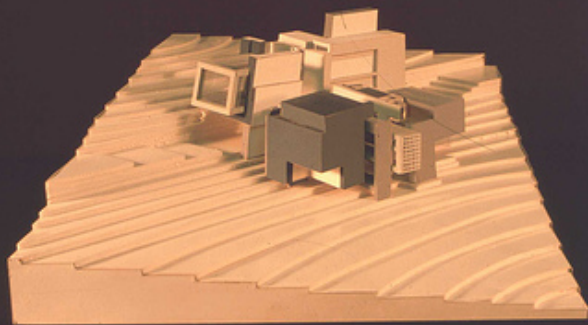
ARCHIGRAM



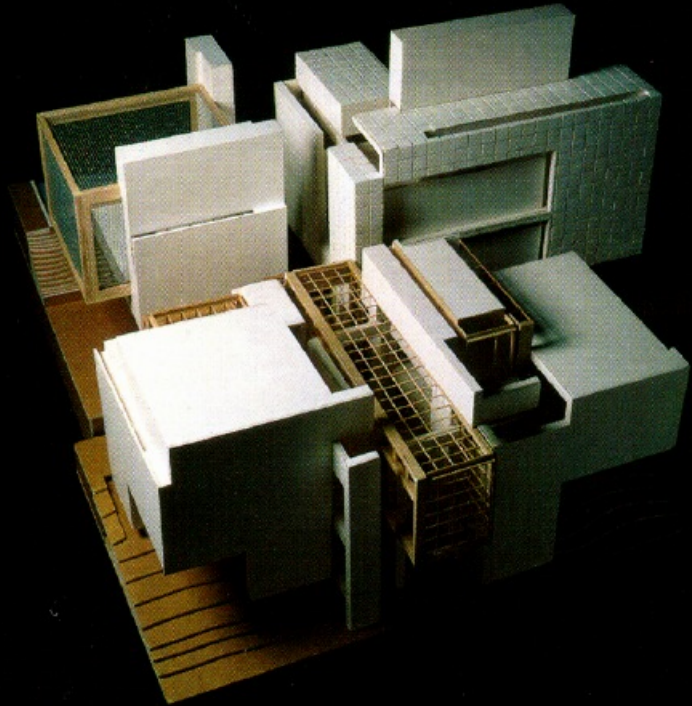
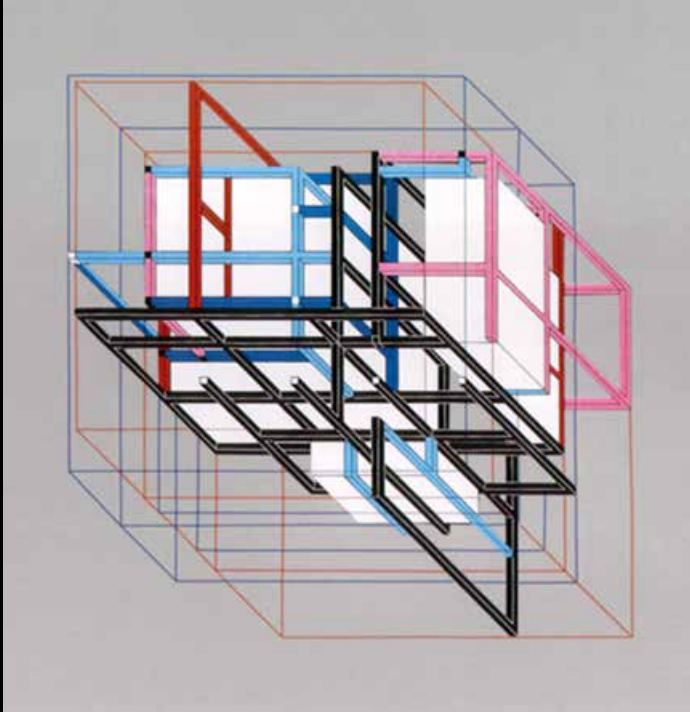
BERNARD TSCHUMI

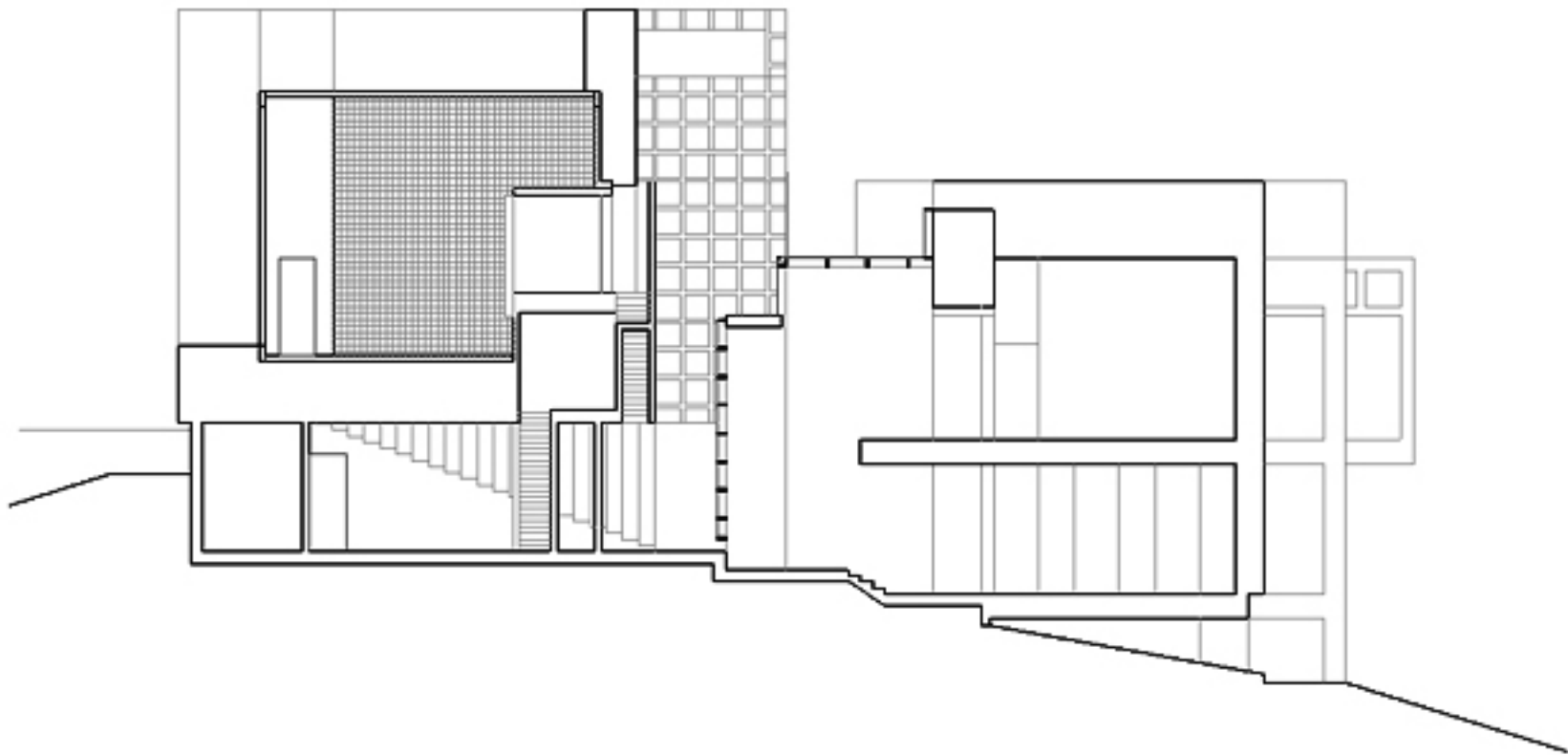


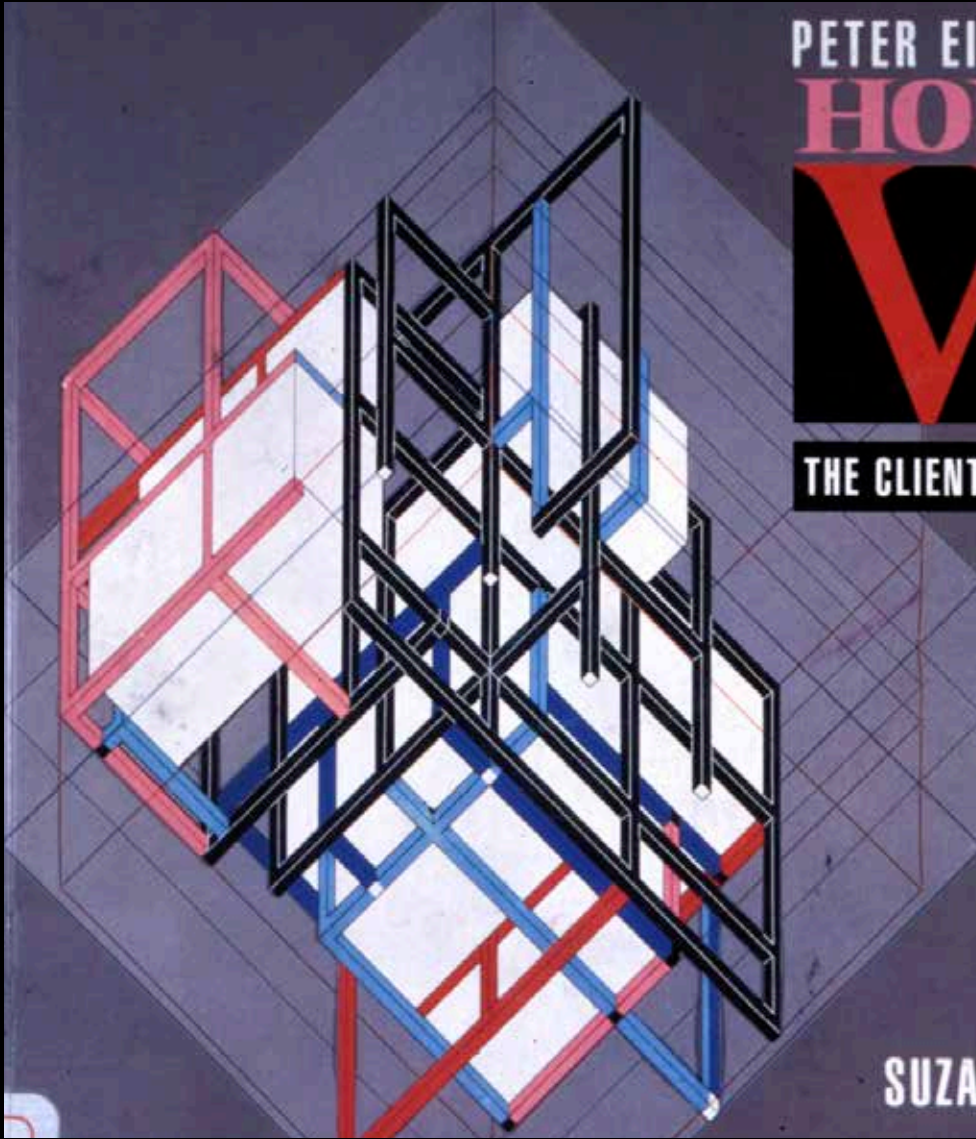
MICROMEGAS.



EISENMAN. HOUSE X.





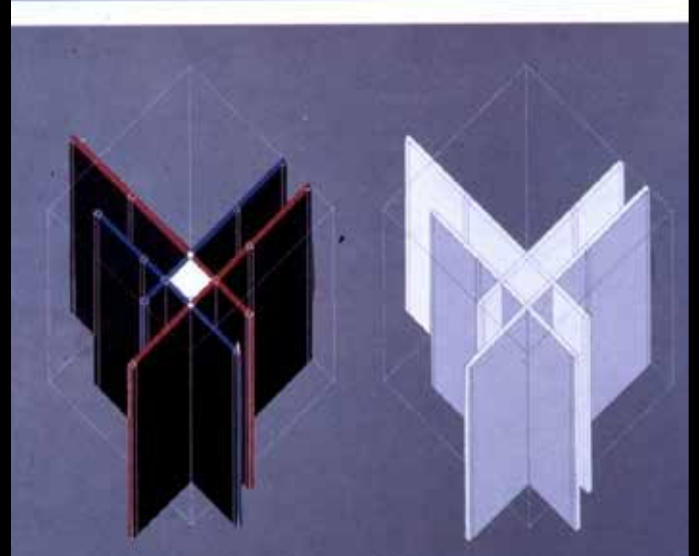
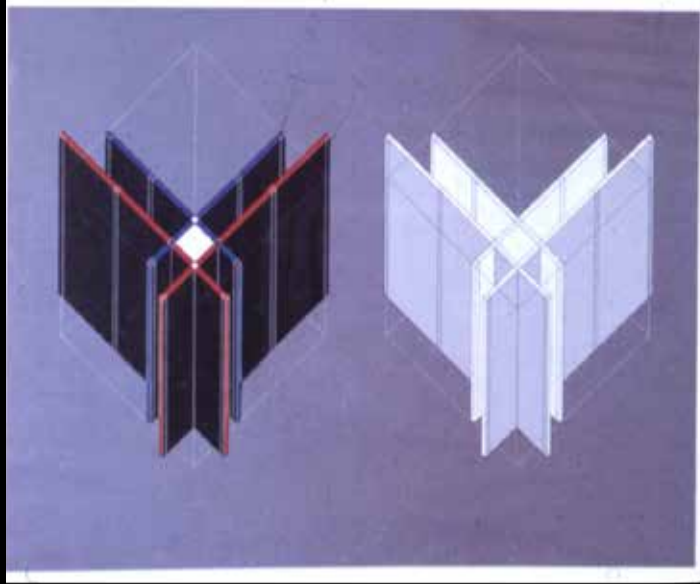
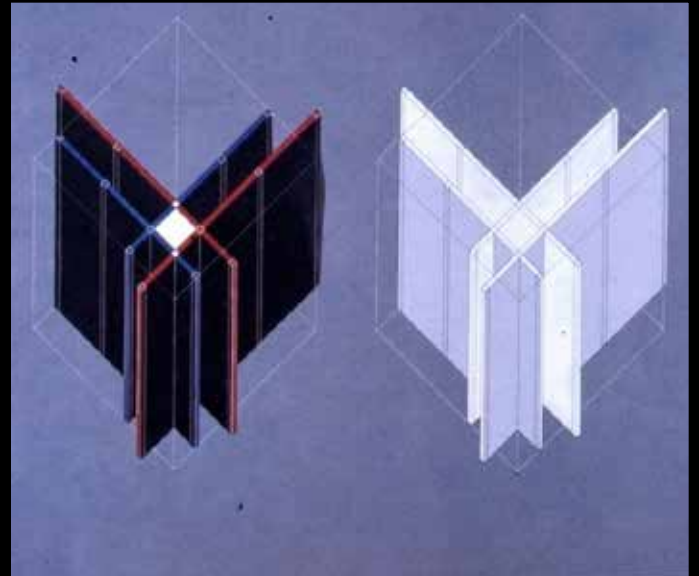
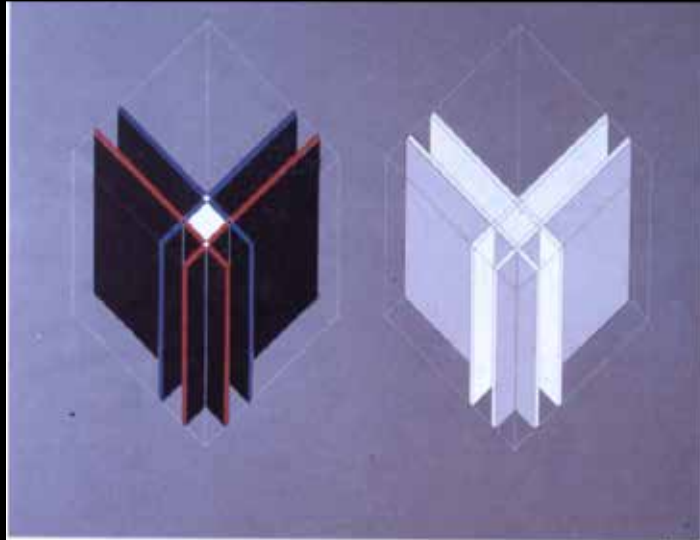


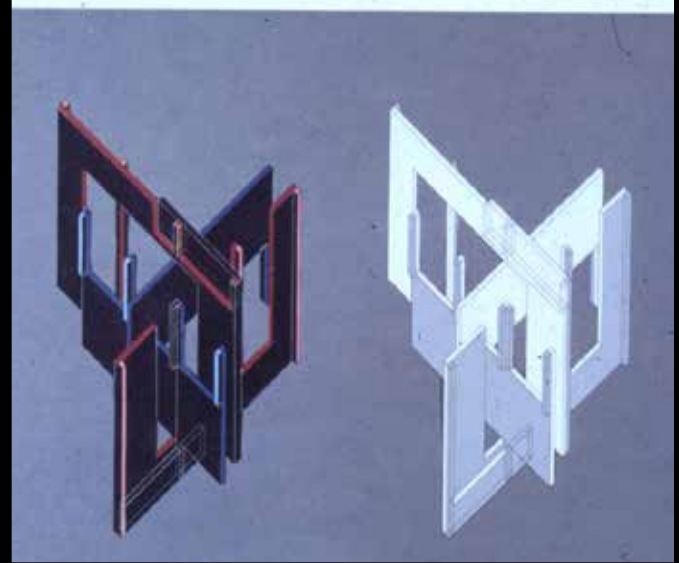
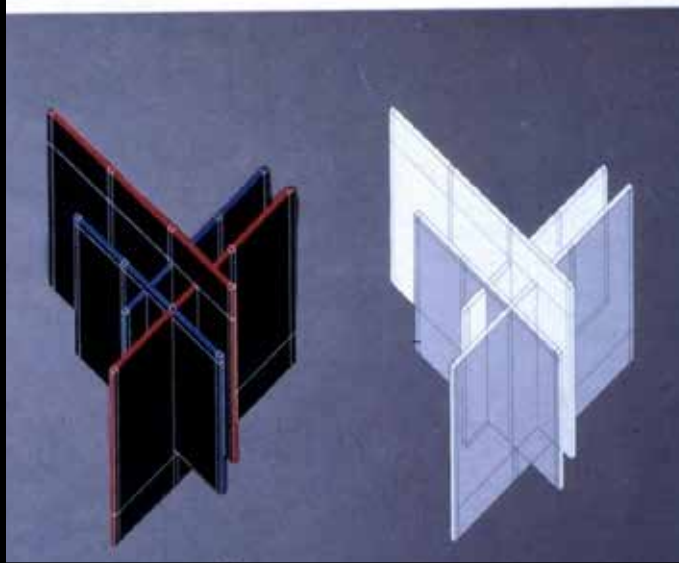
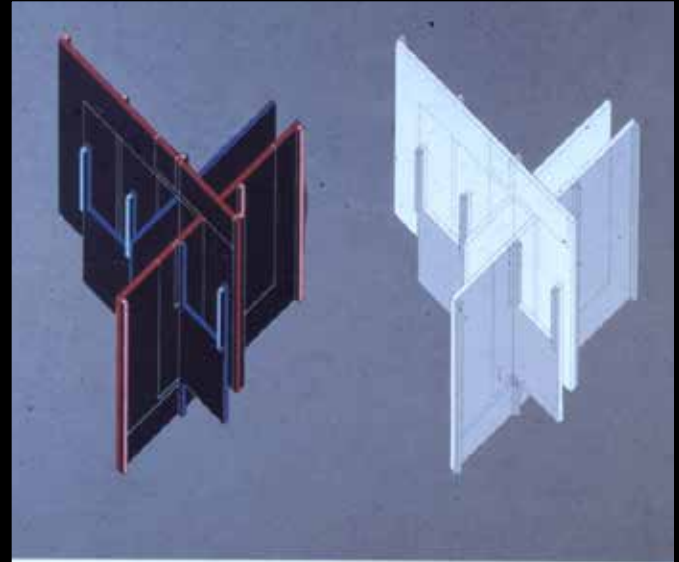
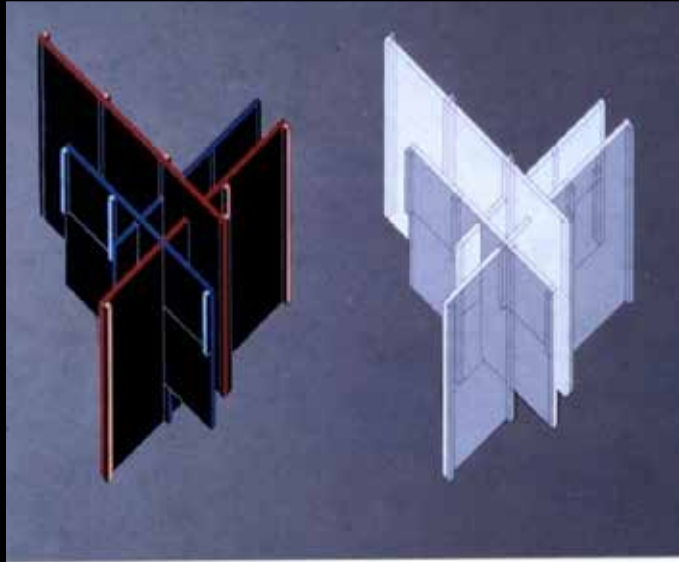
PETER EISENMAN'S
HOUSE

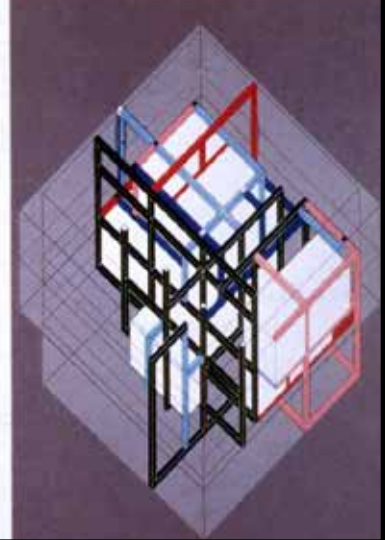
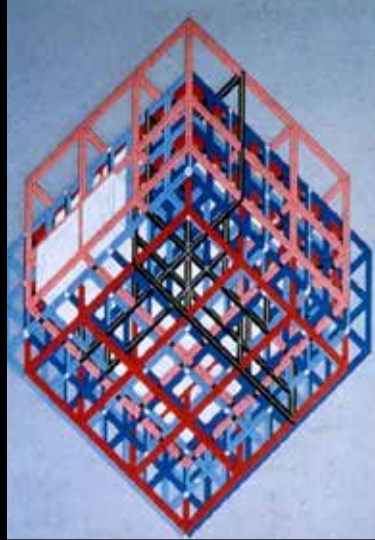
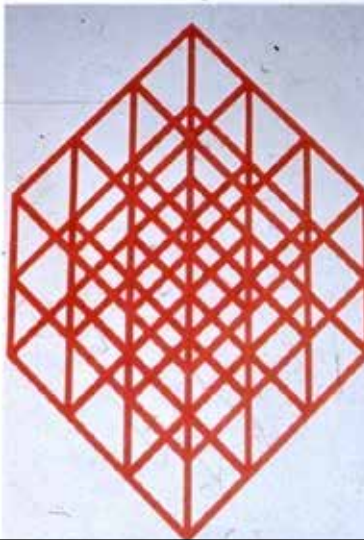
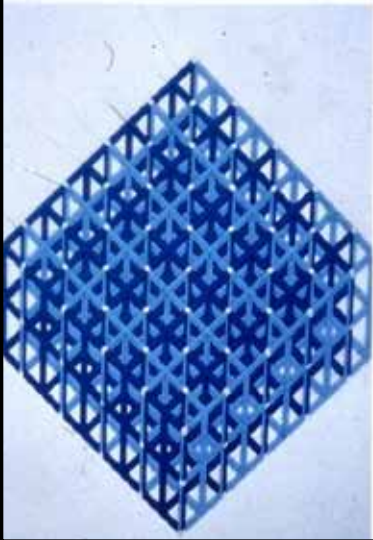
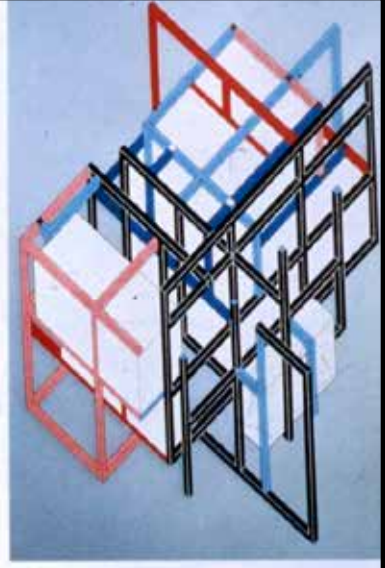
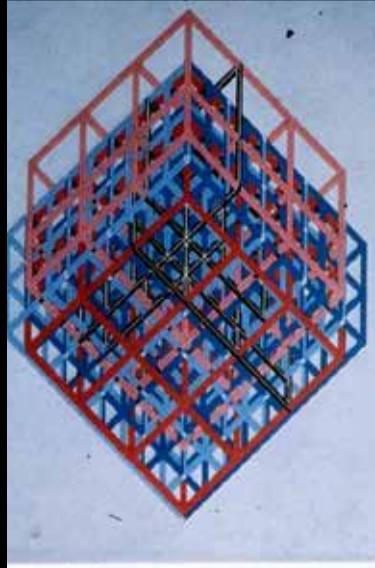
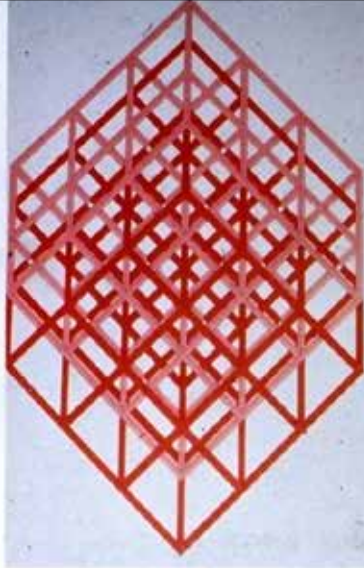
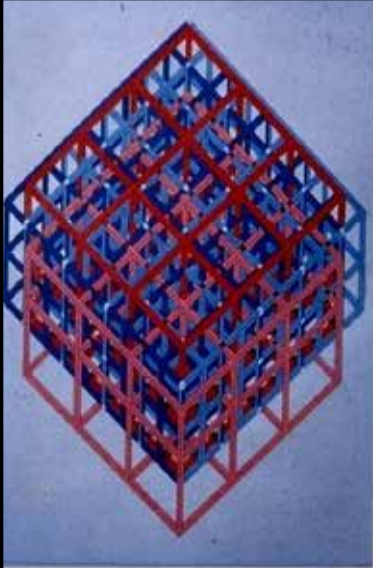
VI

THE CLIENT'S RESPONSE

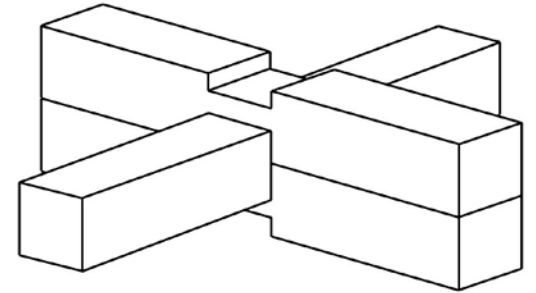
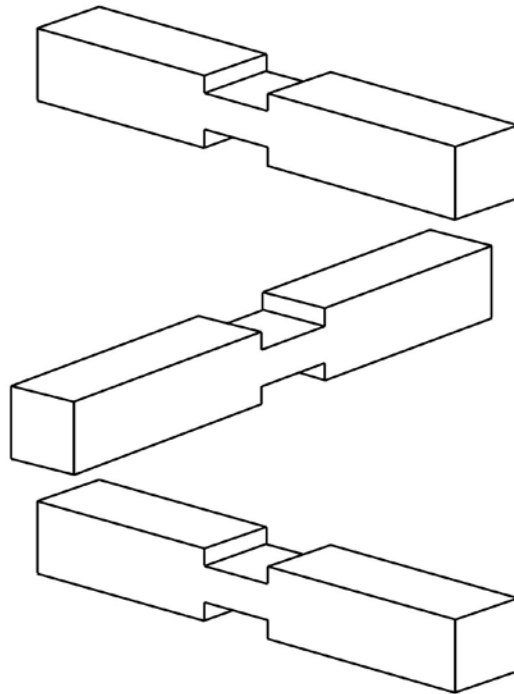
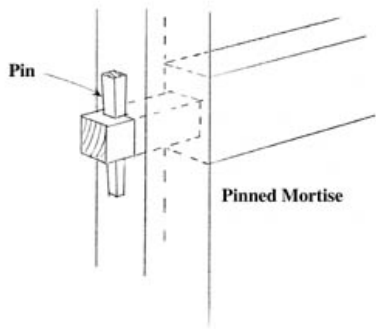
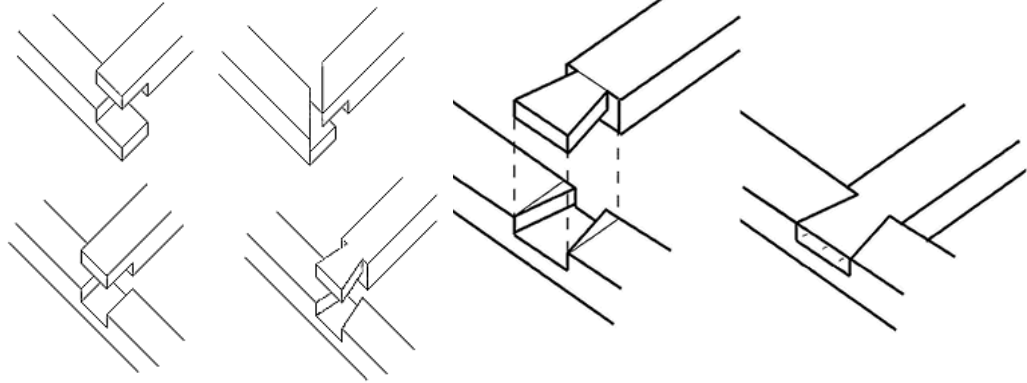
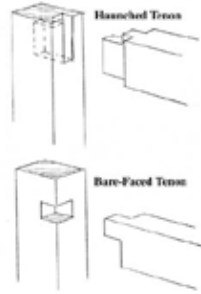
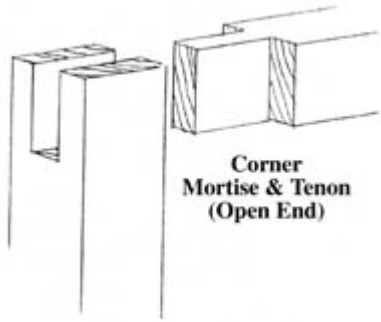
SUZANNE FRANK





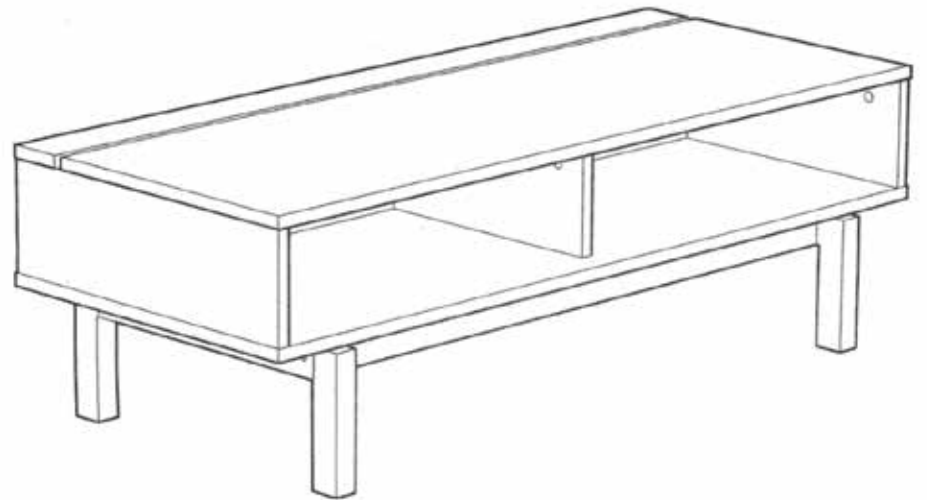


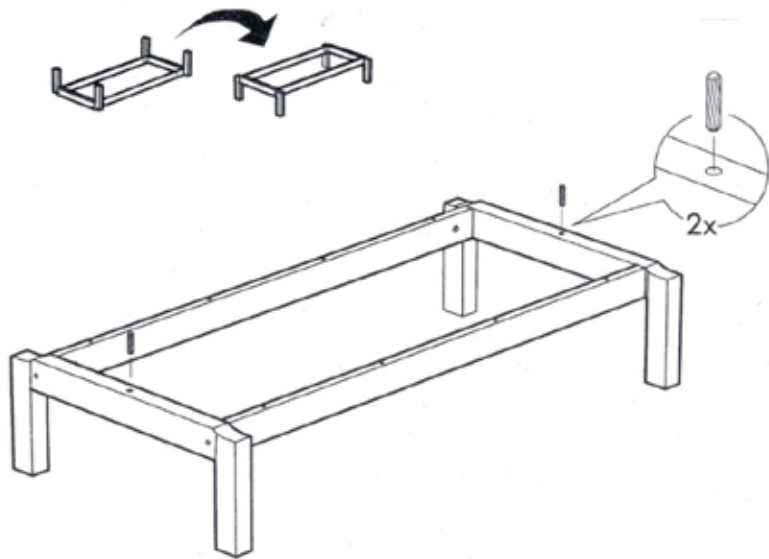
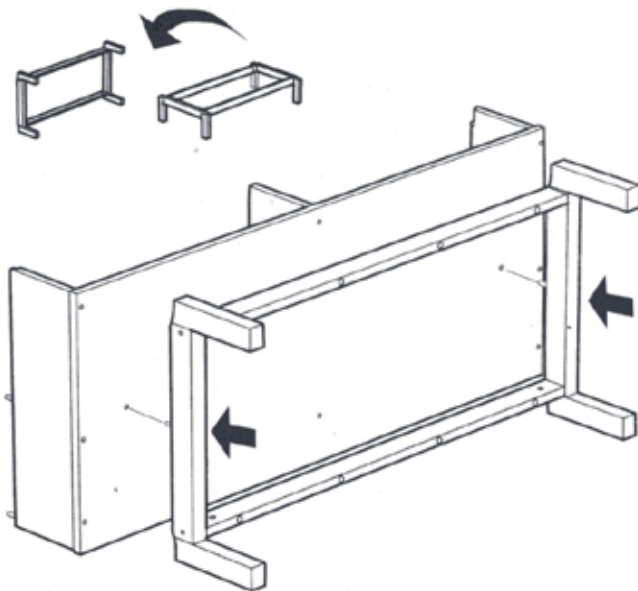
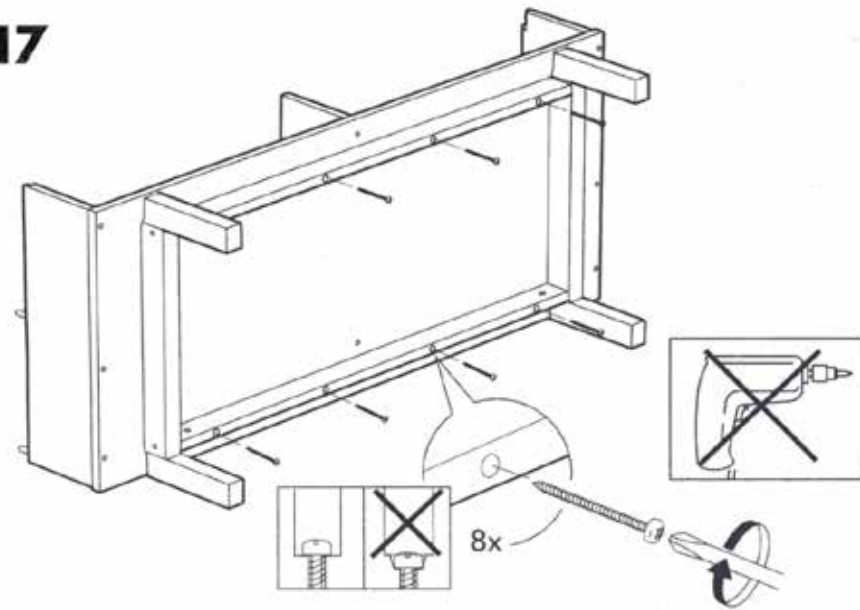
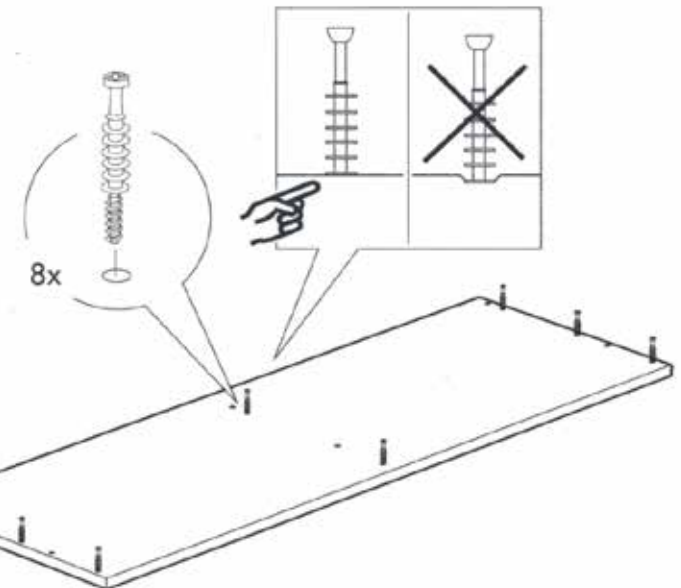




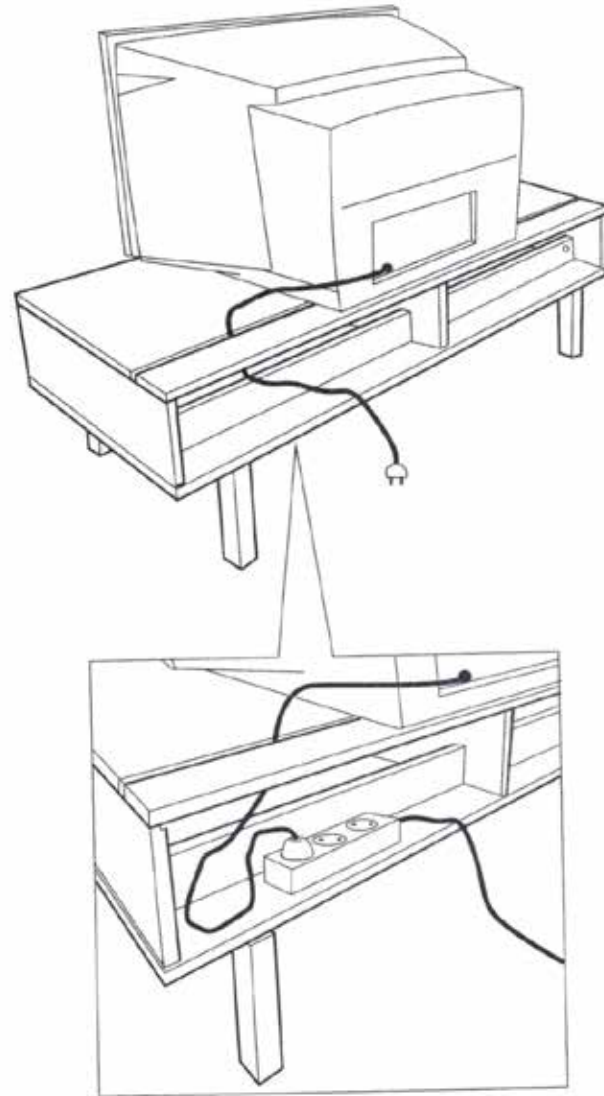
TIMBER JOINTS

LIDEN



15**16****17****18**

23





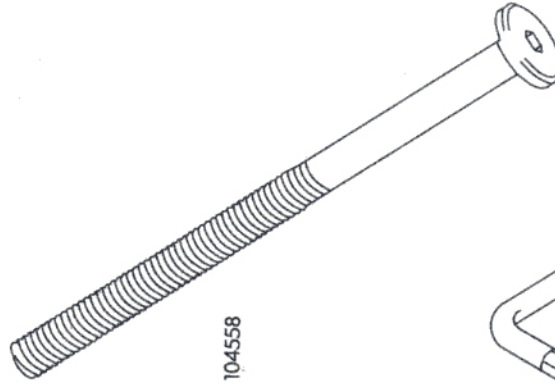
101350

31x



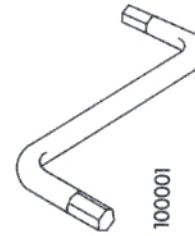
100514

4x



104558

4x



100001

1x



109569

8x



110504

10x



103430

10x



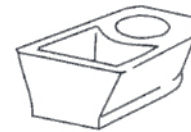
100214

8x



100349

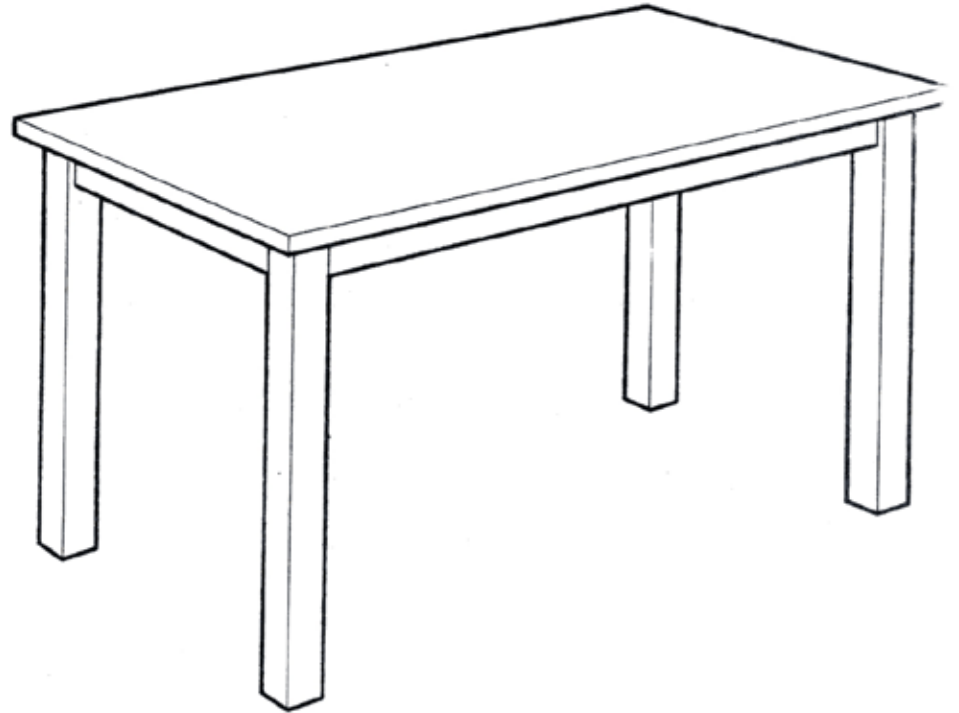
2x



101574

2x

BJÖRKUDDEN

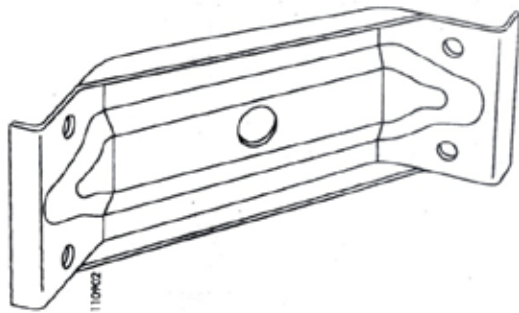




10x

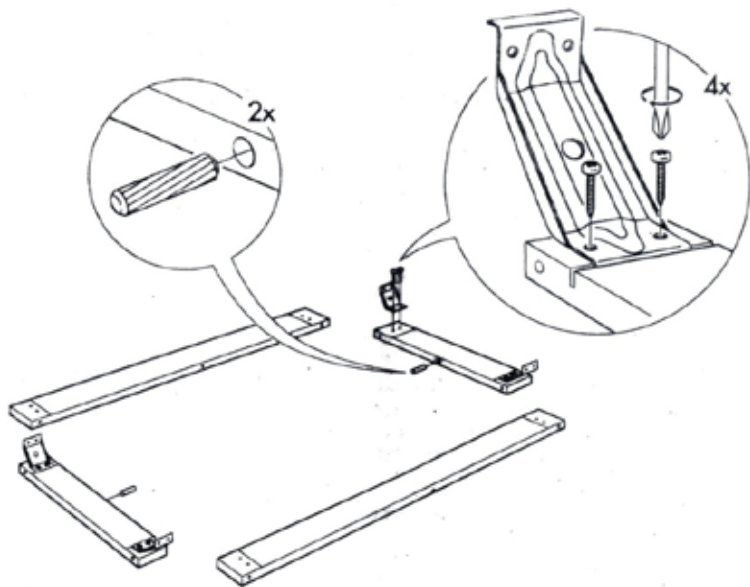


16x

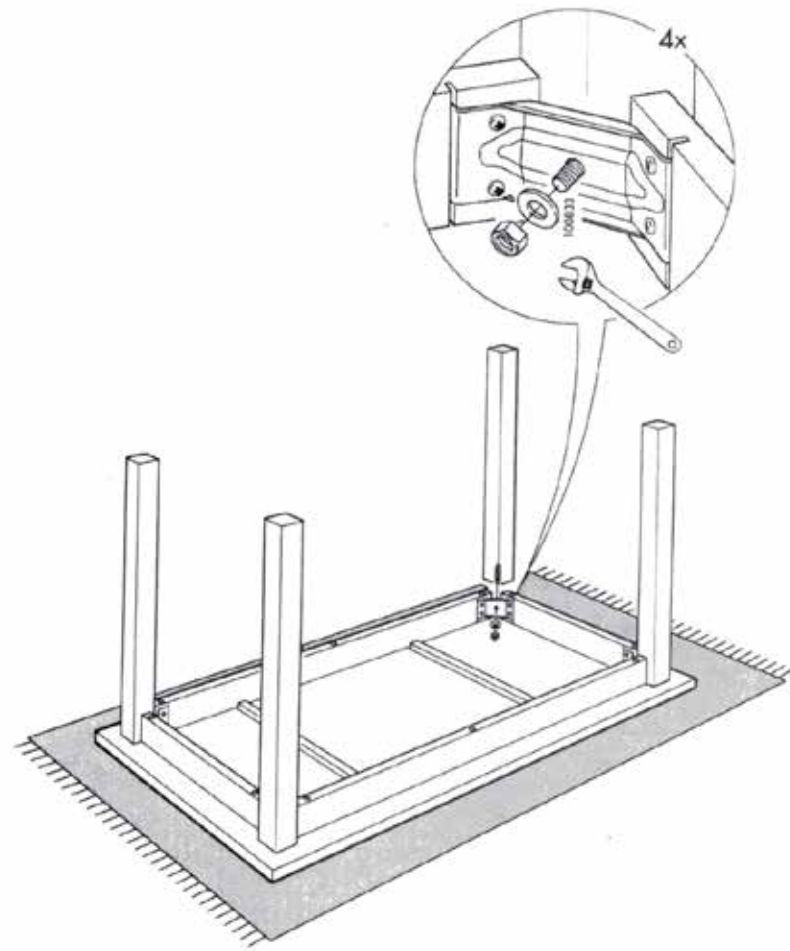


4x

1



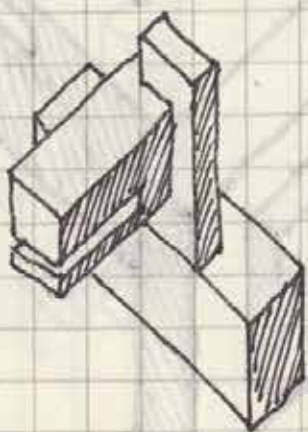
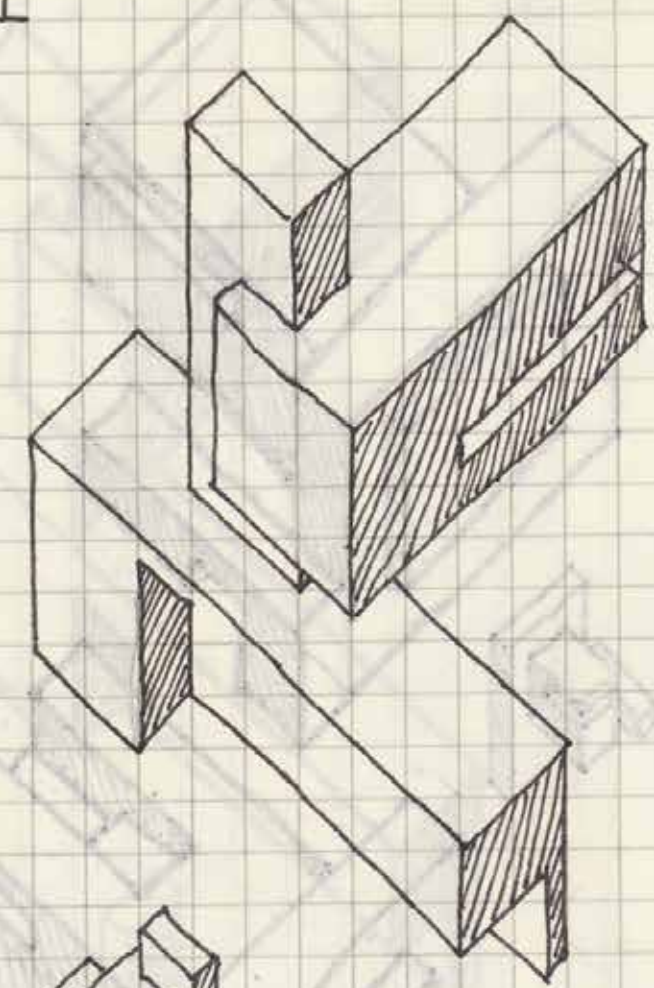
5




STUDENT WORK

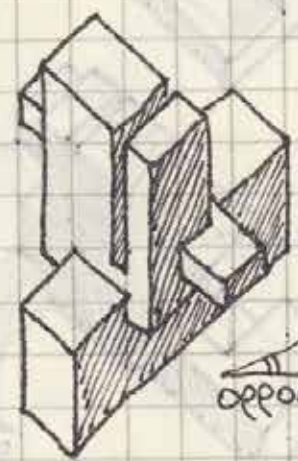
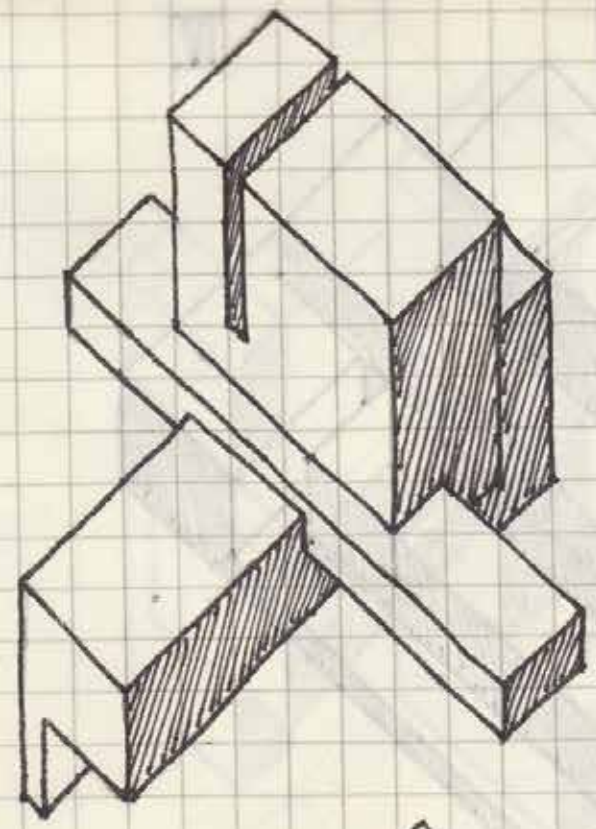
AXONOMETRIC DRAWING

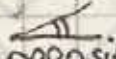
II

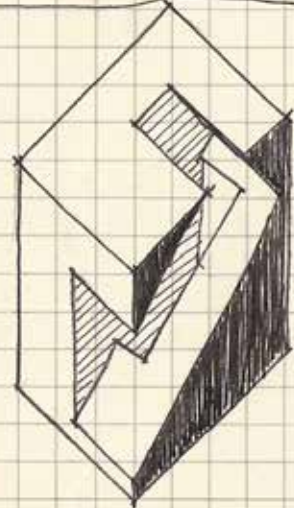
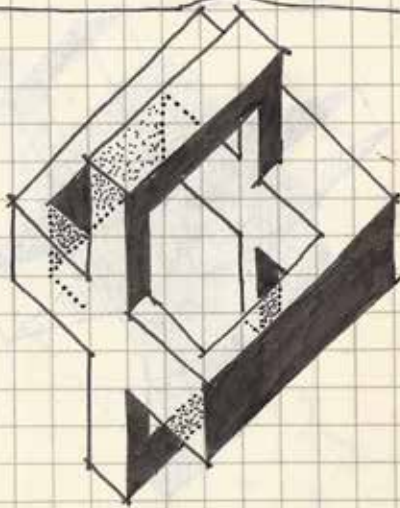
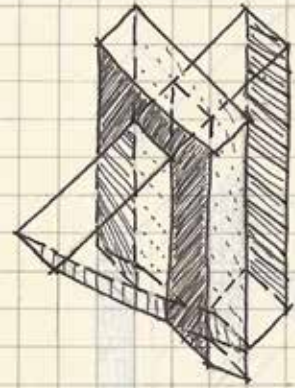


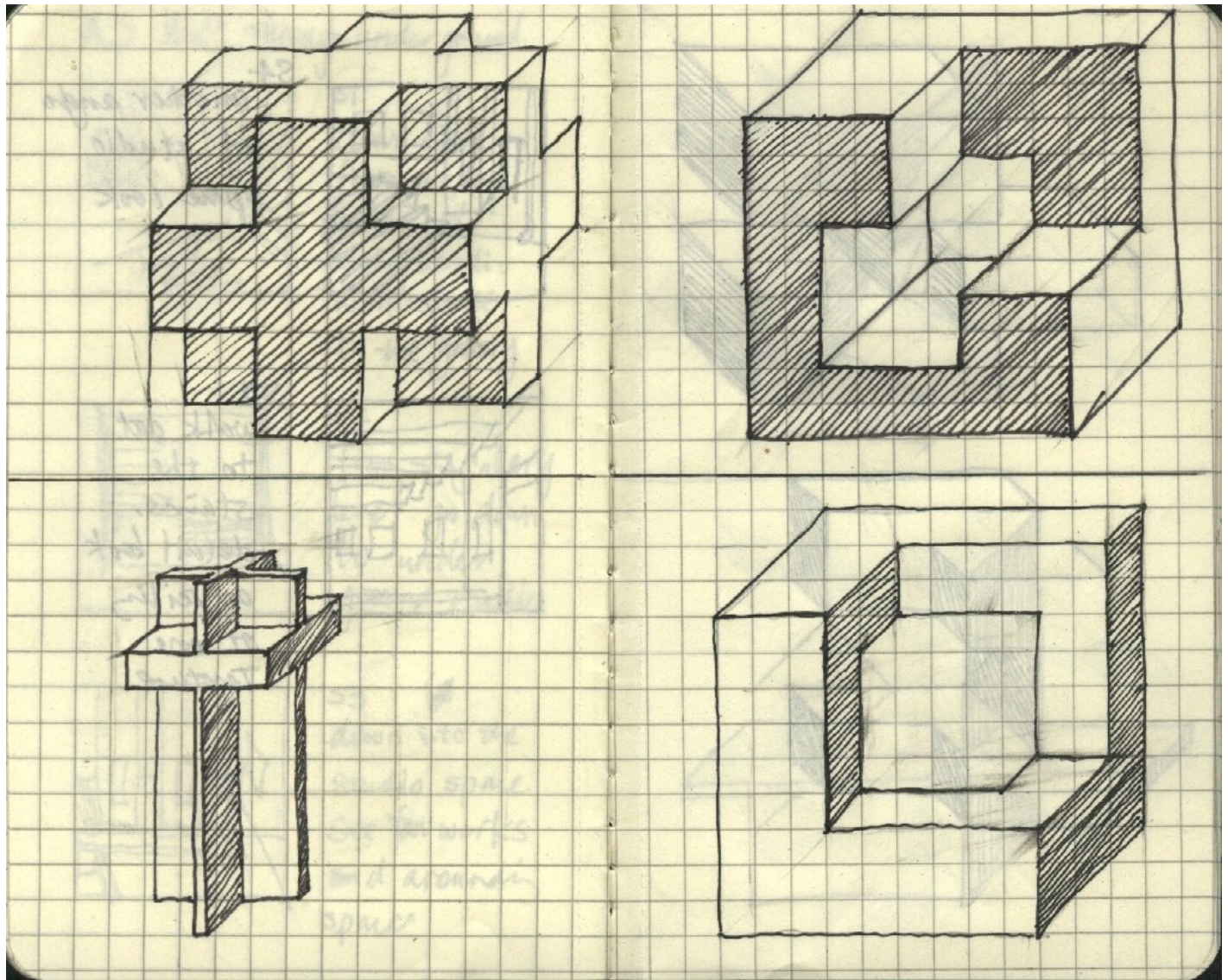
 opposite angle.

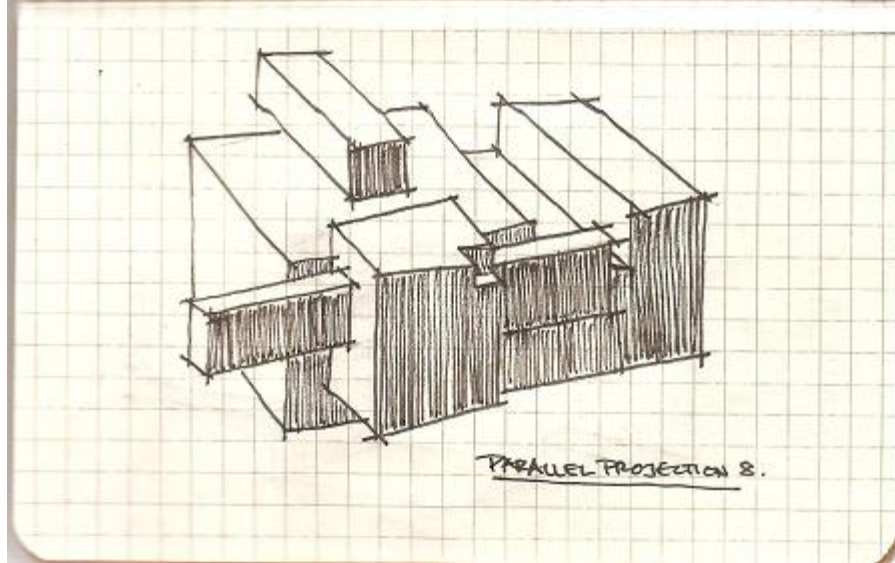
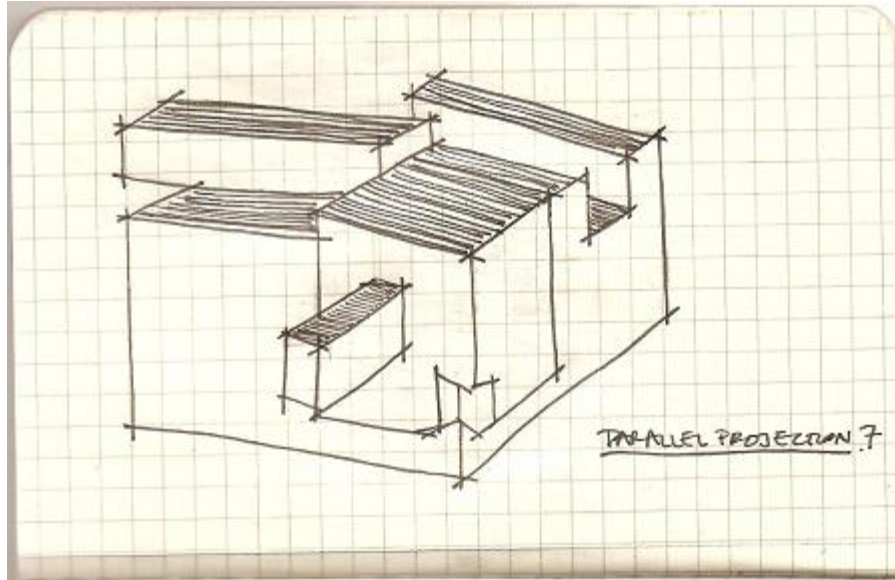
III

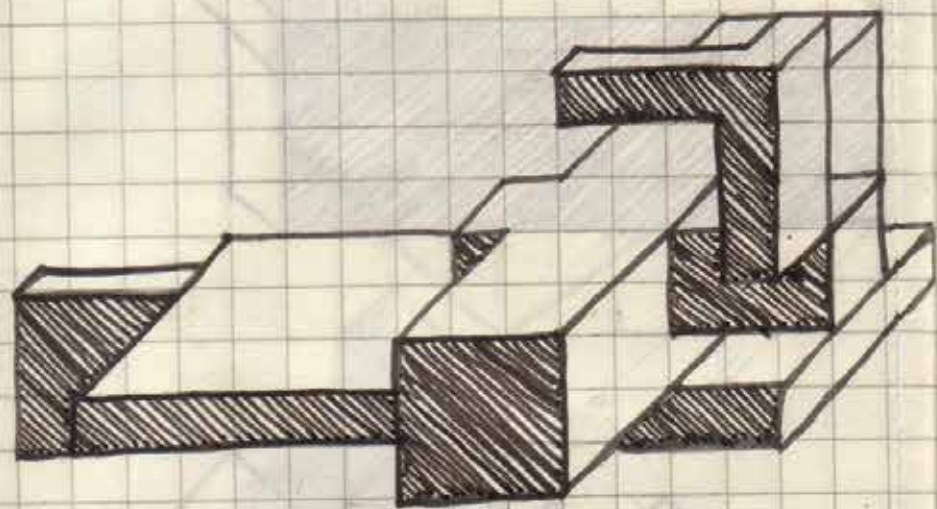
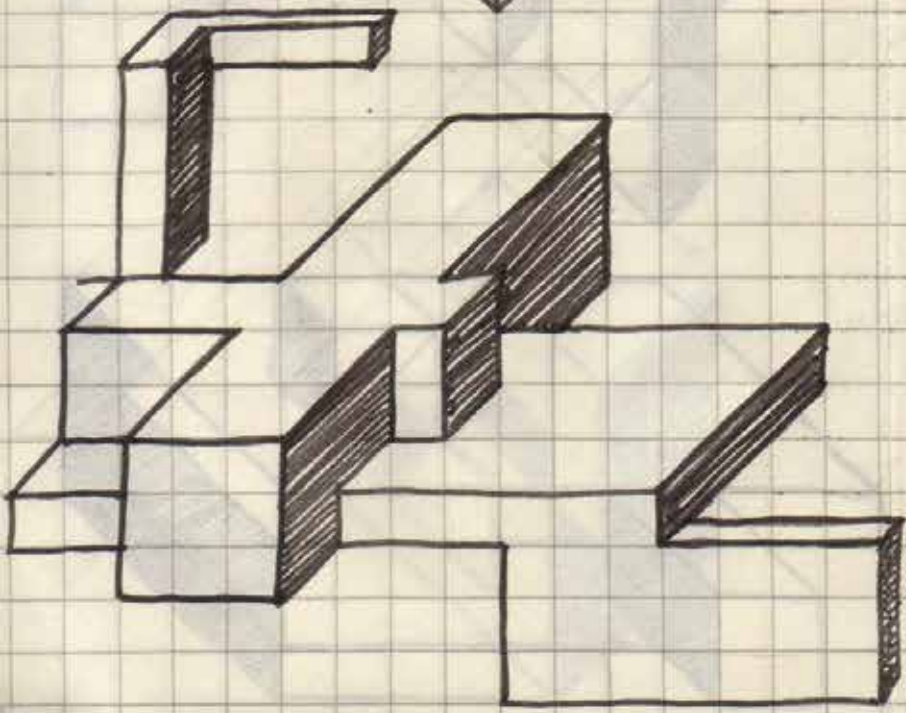
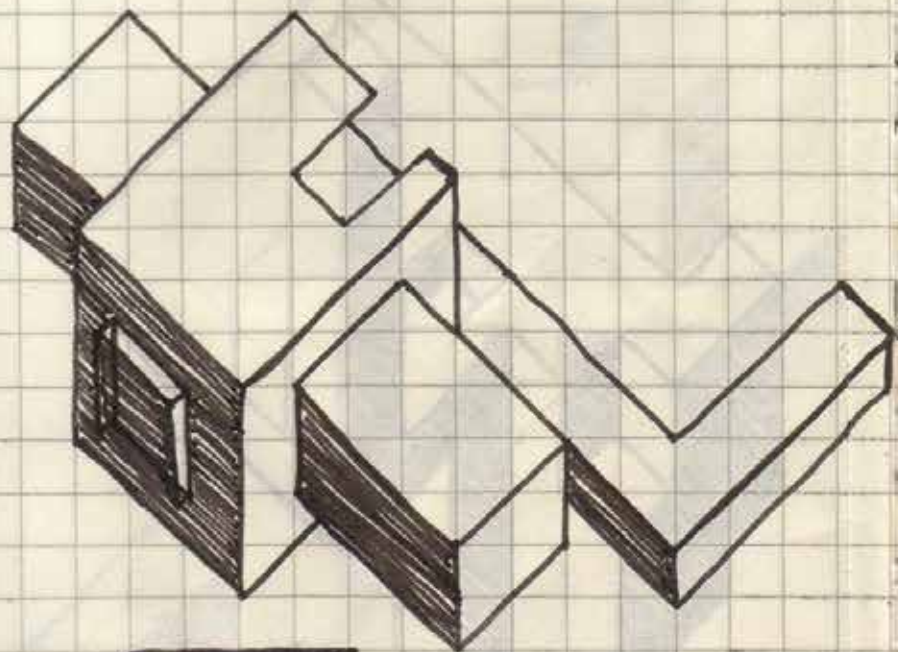


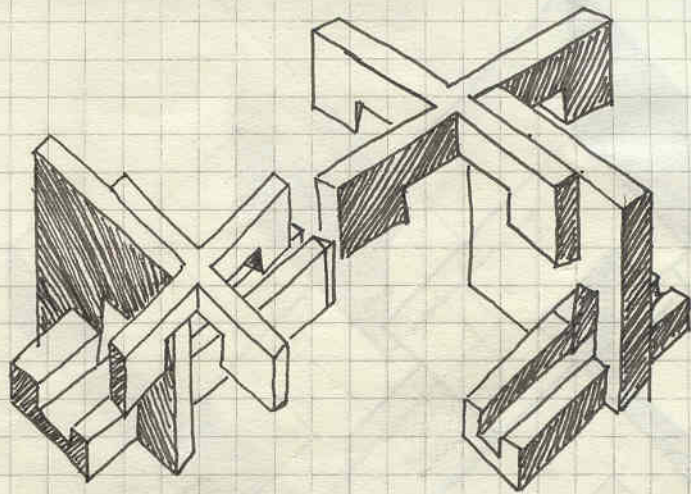
 opposite angle.



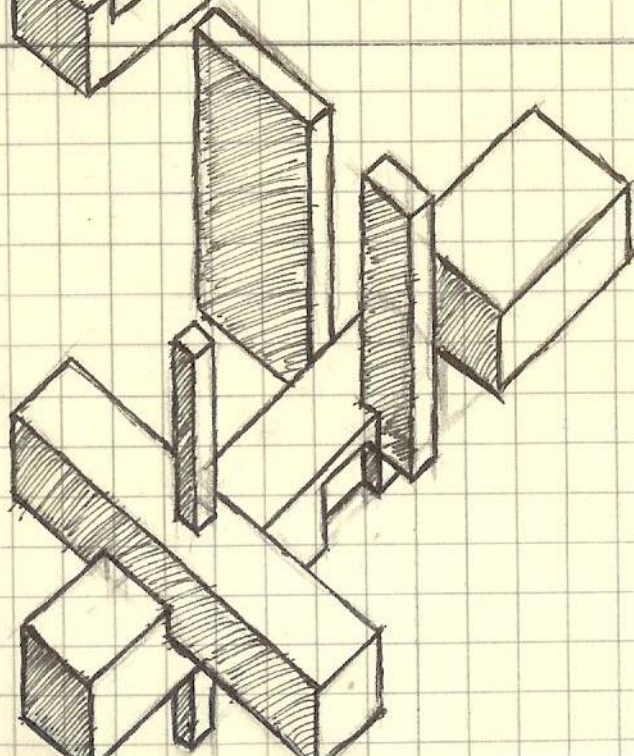
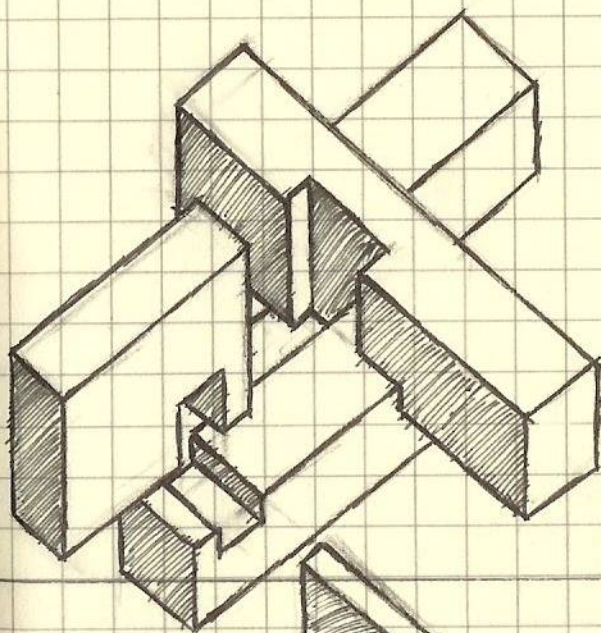
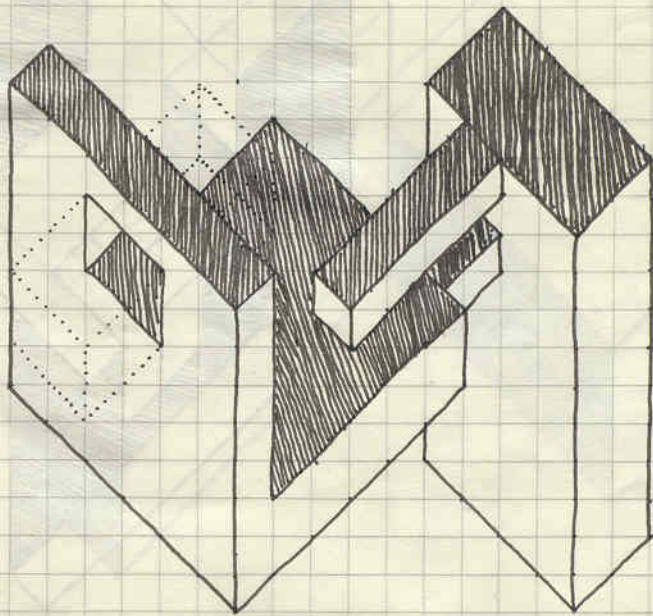


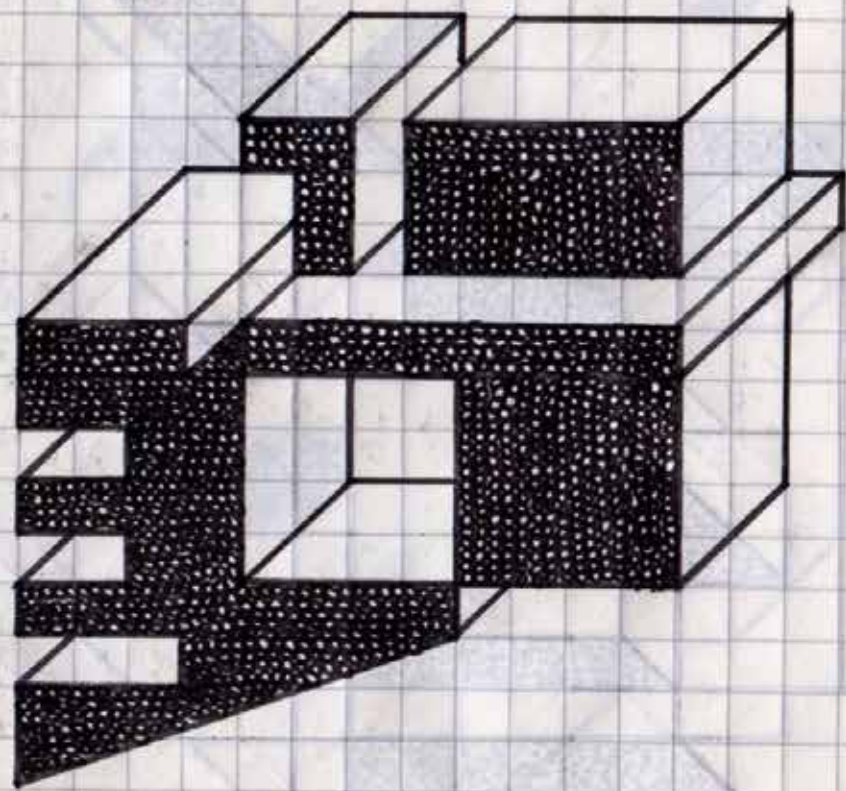
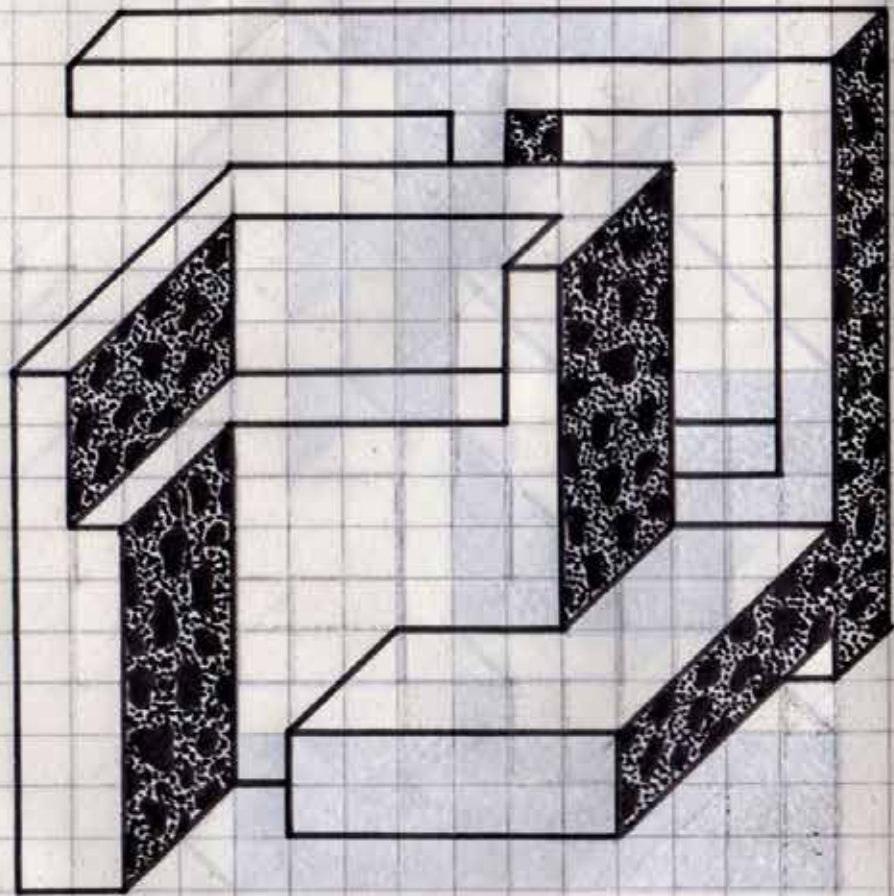


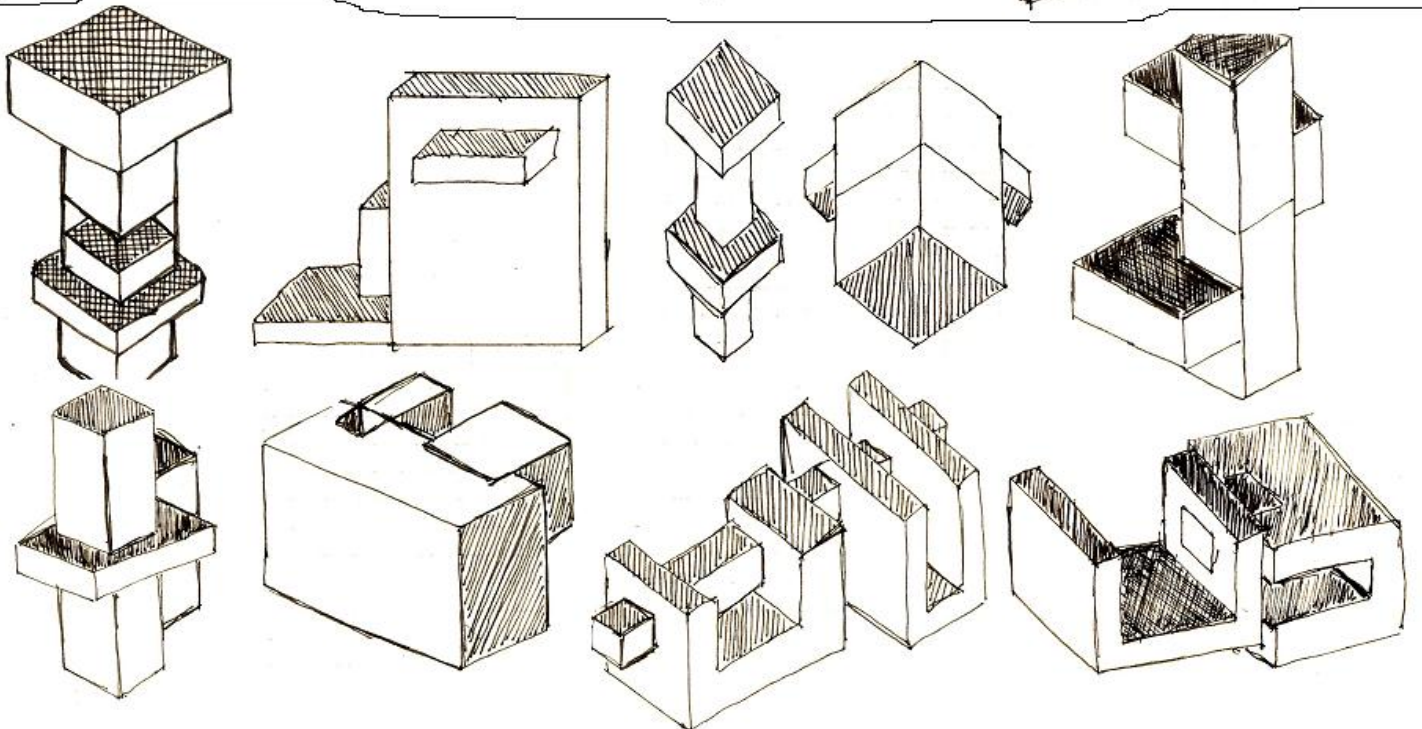
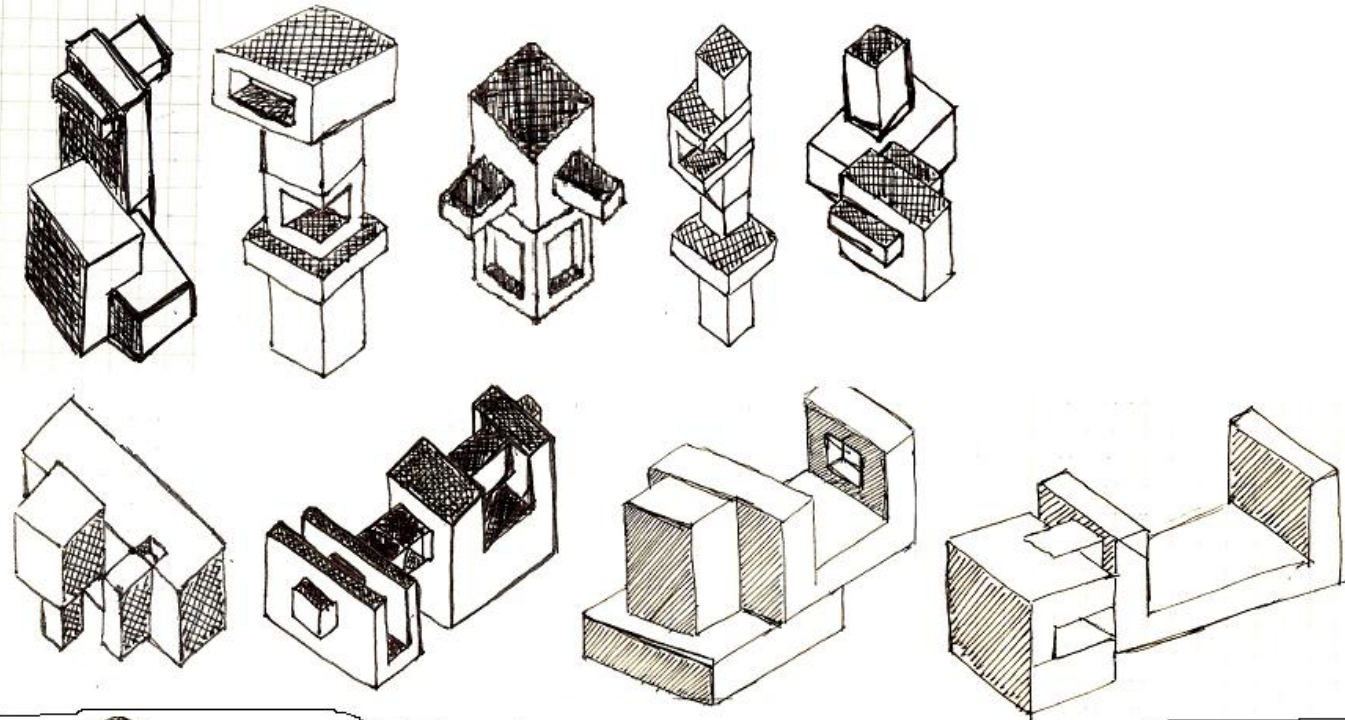


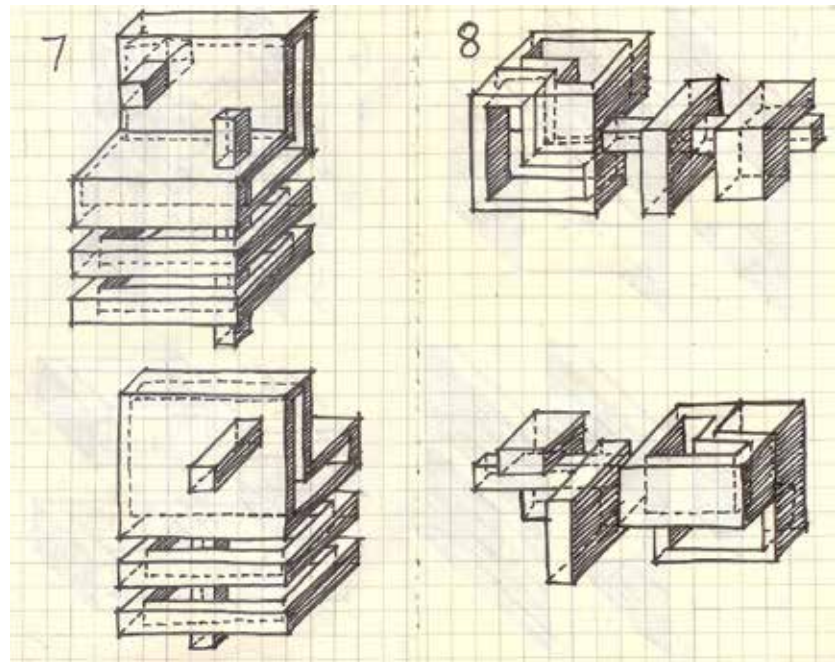
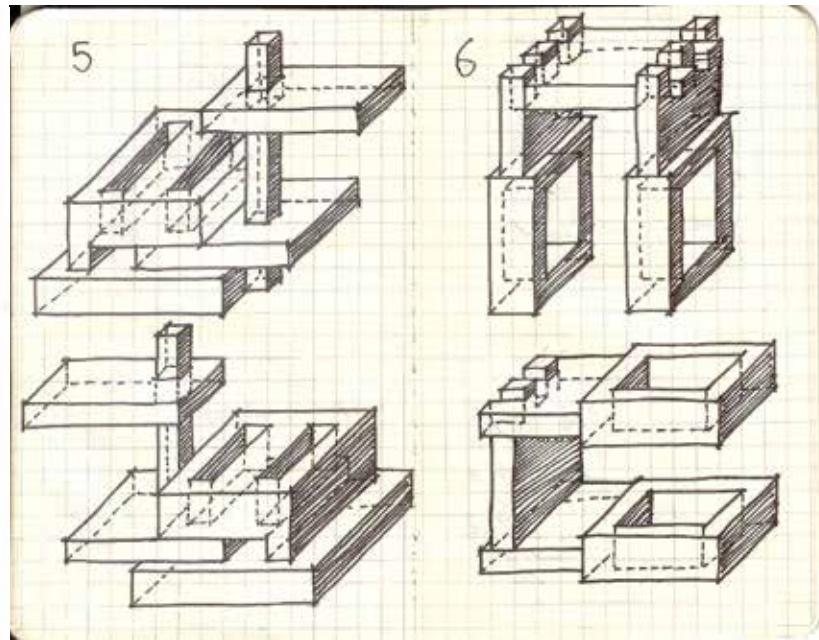
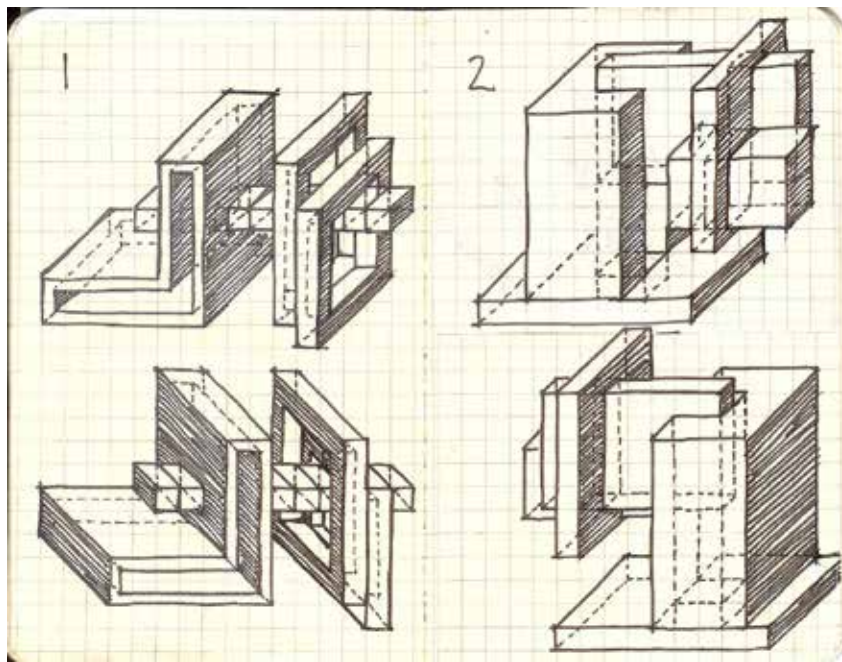


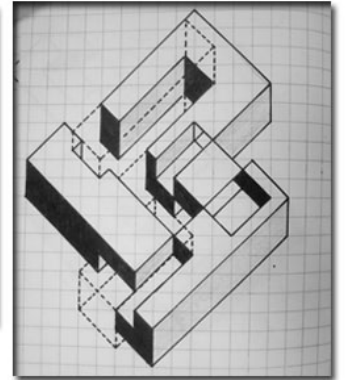
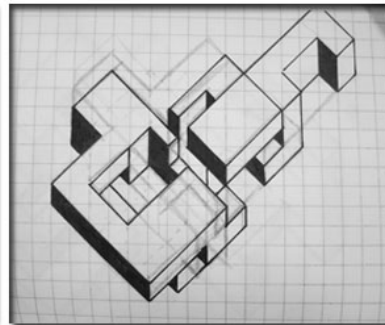
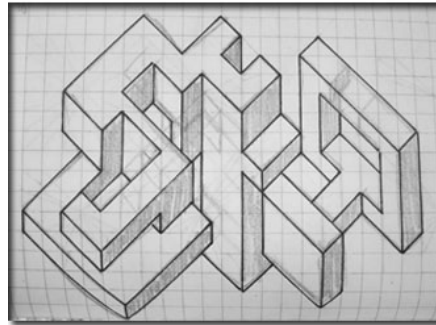
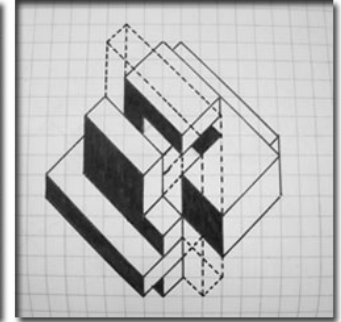
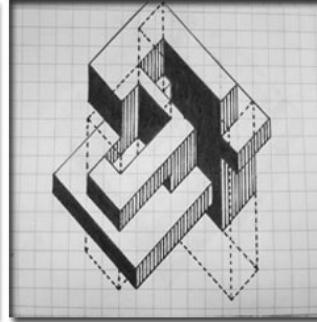
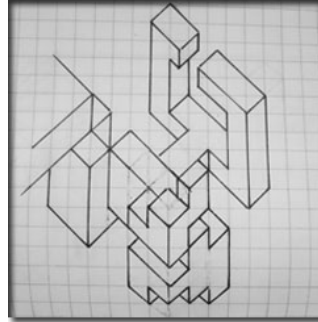
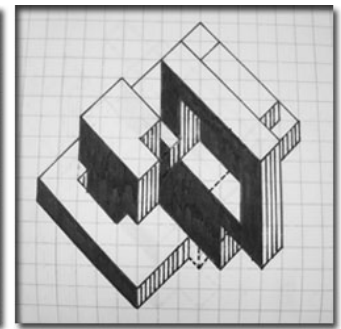
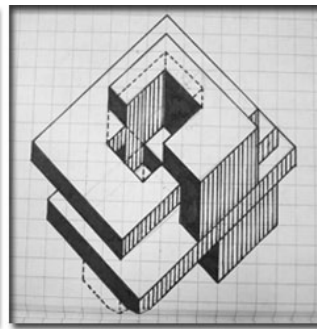
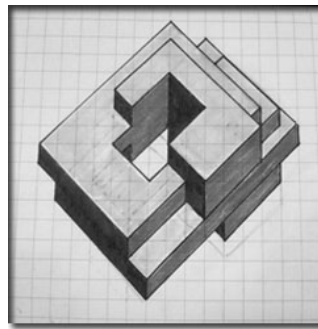
is too simple the answer??

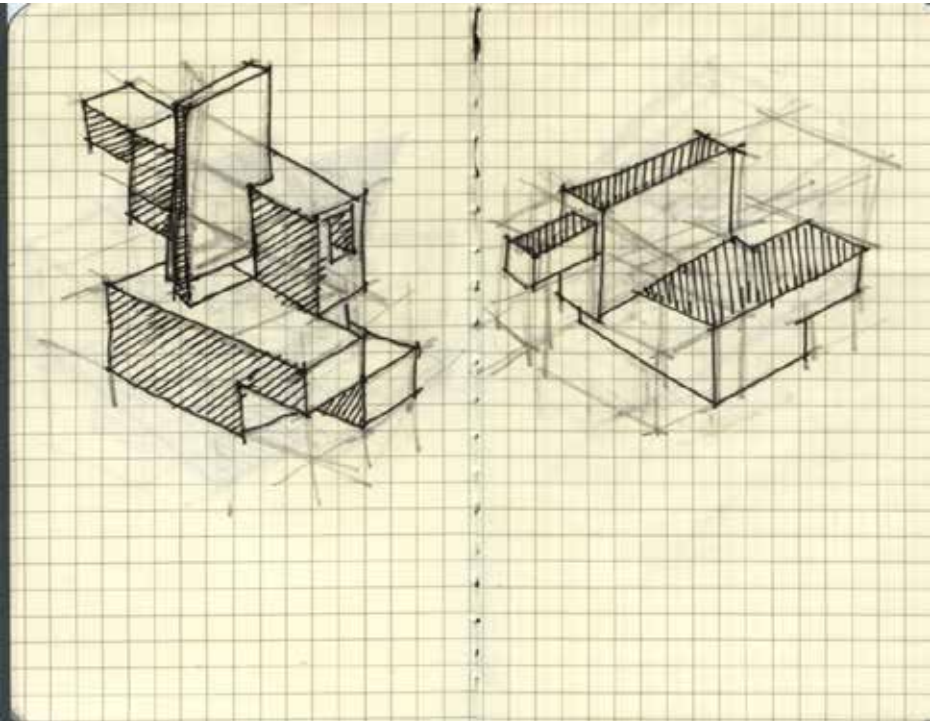
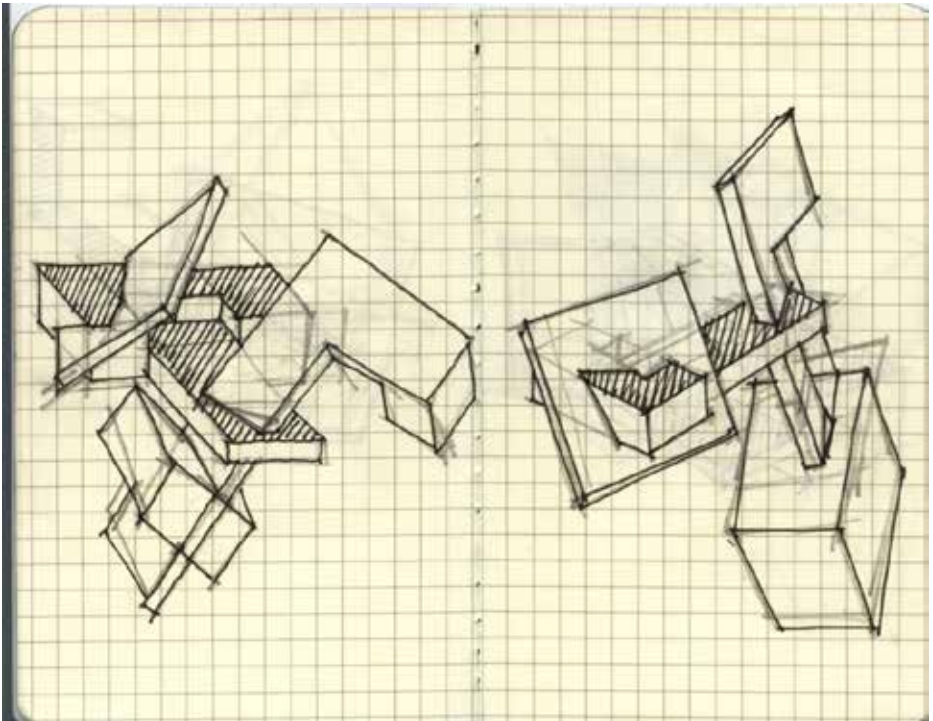




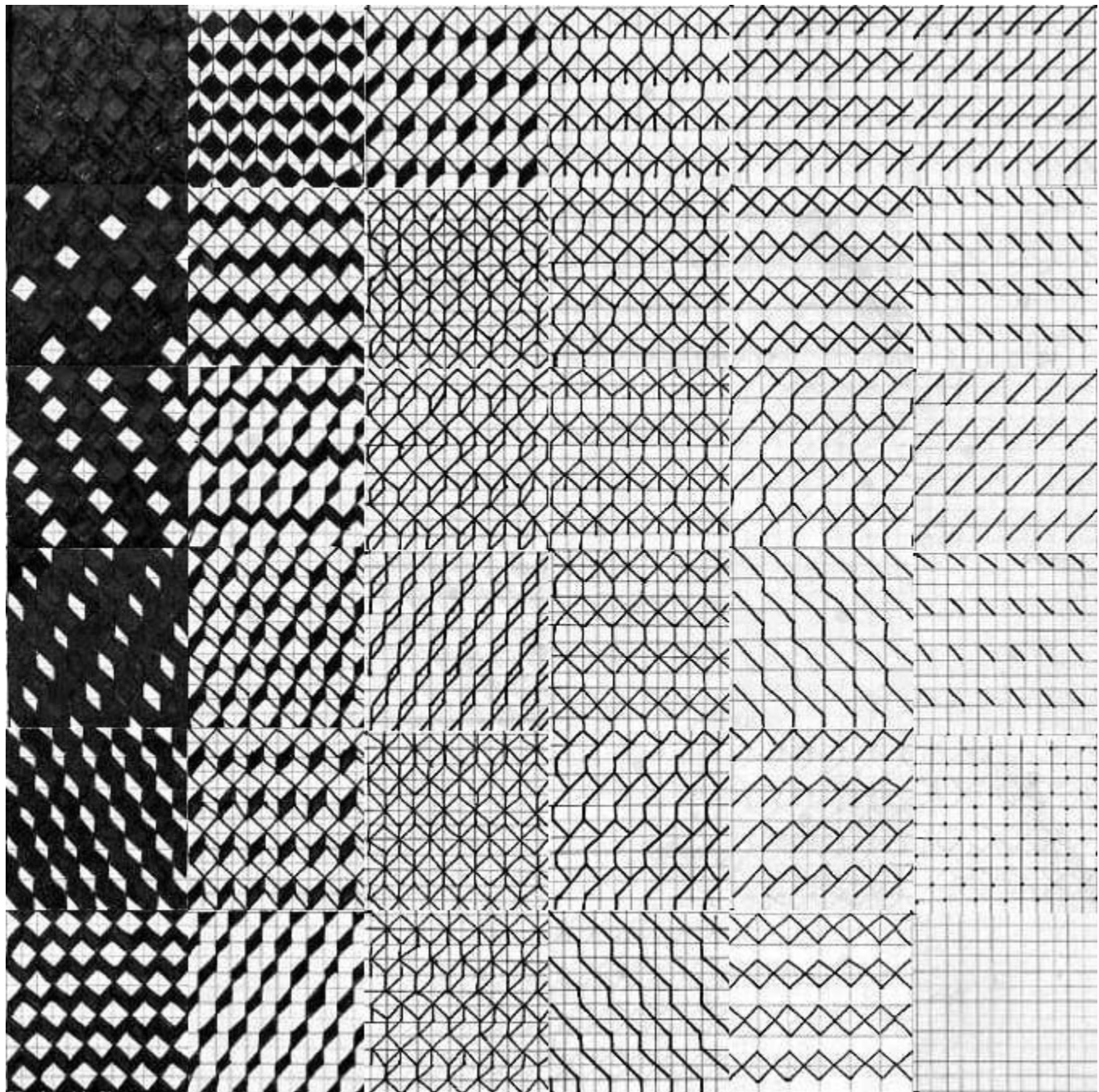


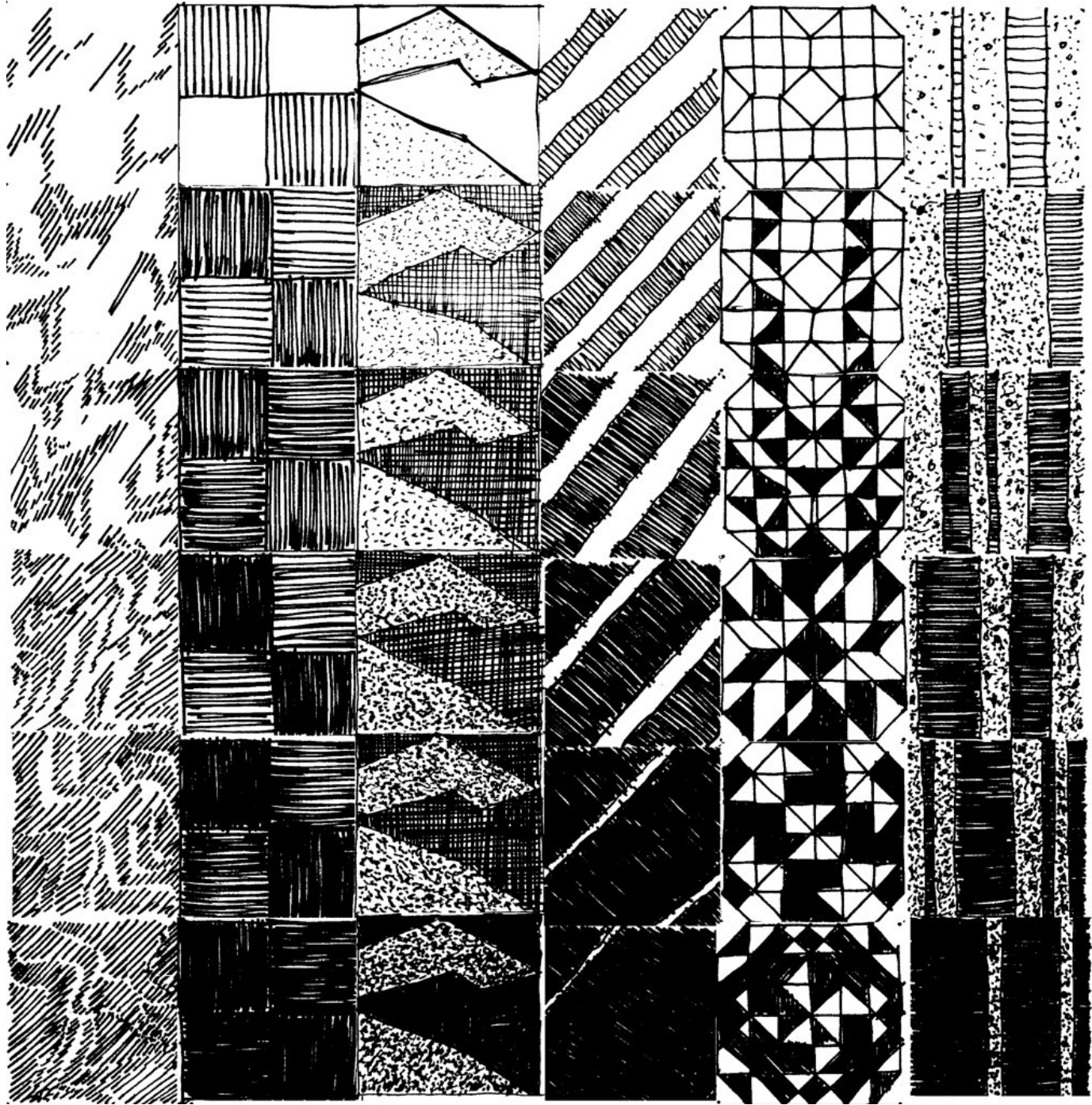






LIGHT + SHADOW





DEMO: CryENGINE3

ALL THE FILES YOU NEED ARE HERE:

Playup: <http://www.playuptools.com/downloads/>

CryENGINE3 Free SDK: <http://www.crydev.net/>

Or Online at UNSW: `coursefolders.fbe.unsw.edu.au\DATA\courses\ARCH1101-ArchDes1\Resources\CryENGINE3`

Or on the C drive of the machines in the Red Center labs: `C:\Program Files (x86)\Electronic Arts\Crytek`

QUESTIONS?