

**ARCH1101** LOWE

**CHANGE OF VENUE**

**FROM NEXT WEEK**

**THE LECTURE WILL**

**BE IN THE SCIENCE**

**THEATRE. F13.**

# Kensington Campus Map



### LEGEND

	Student Centre		General Parking		Directory
	Medical Centre		Bus Stop		External Help Point
	Security		Security Shuttle Bus Stop		Internal Help Point
	FM Assist		Kensington to COFA Bus Stop		Smoking Zone
	Bank		Stops		Gate number
	ATM				

<b>Buildings</b> 233 Areas Parade AGSM Australian School of Business Biological Sciences Mathematics Building D10 Observatory Chemical Sciences Civil Engineering Computer Science Dales Dangerous Goods Store Electrical Engineering Golf House 25 Botany Street John Goodall John Hume Science Law Library Long Gully Research Centre Materials Science	B4 B7 B8 B9 B10 B11 B12 B13 B14 B15 B16 B17 B18 B19 B20 B21 B22 B23 B24 B25 B26 B27 B28 B29 B30 B31 B32 B33 B34 B35 B36 B37 B38 B39 B40 B41 B42 B43 B44 B45 B46 B47 B48 B49 B50 B51 B52 B53 B54 B55 B56 B57 B58 B59 B60 B61 B62 B63 B64 B65 B66 B67 B68 B69 B70 B71 B72 B73 B74 B75 B76 B77 B78 B79 B80 B81 B82 B83 B84 B85 B86 B87 B88 B89 B90 B91 B92 B93 B94 B95 B96 B97 B98 B99 B100	<b>UNSW Park (Bathurst Avenue)</b> Student Accommodation Barber Apartments Creative College Graduate Dining Hall International House New College New College Postgrad. Village Philip Shearer College Sydney College UNSW Village University Terrace Faculty Offices Arts and Social Sciences Australian School of Business Built Environment Engineering Law Medicine Science	E264 E265 E266 E267 E268 E269 E270 E271 E272 E273 E274 E275 E276 E277 E278 E279 E280 E281 E282 E283 E284 E285 E286 E287 E288 E289 E290 E291 E292 E293 E294 E295 E296 E297 E298 E299 E300	<b>Theatres</b> AGSM Theatre Above Acting Rehearsal Broadcast Theatre Central Lecture Block Chemical Sciences Theatre Civil Engineering (Newn O) Glynn Auditorium IG Tree Theatre KJ Byrne Studio Keith Burrows Theatre Law Theatre Science Theatre Sydney Theatre New South Global Theatre Old Main Theatre (12) Parade Theatre Project Theatre Red Centre Theatre Rex Vintage Theatre Ritchie Theatre Rupert Myers Theatre	Q27 F3 E27 B11 B12 B13 B14 B15 B16 B17 B18 B19 B20 B21 B22 B23 B24 B25 B26 B27 B28 B29 B30 B31 B32 B33 B34 B35 B36 B37 B38 B39 B40 B41 B42 B43 B44 B45 B46 B47 B48 B49 B50 B51 B52 B53 B54 B55 B56 B57 B58 B59 B60 B61 B62 B63 B64 B65 B66 B67 B68 B69 B70 B71 B72 B73 B74 B75 B76 B77 B78 B79 B80 B81 B82 B83 B84 B85 B86 B87 B88 B89 B90 B91 B92 B93 B94 B95 B96 B97 B98 B99 B100	<b>Services</b> UNSW Residential Communities Administrators and Environments Alumni Association Arts @ UNSW Career Employment Office Cashier Clinicians Arts C DWTACT Group Program & Scholarship Counseling Service E15 E16 E17 E18 E19 E20 E21 E22 E23 E24 E25 E26 E27 E28 E29 E30 E31 E32 E33 E34 E35 E36 E37 E38 E39 E40 E41 E42 E43 E44 E45 E46 E47 E48 E49 E50 E51 E52 E53 E54 E55 E56 E57 E58 E59 E60 E61 E62 E63 E64 E65 E66 E67 E68 E69 E70 E71 E72 E73 E74 E75 E76 E77 E78 E79 E80 E81 E82 E83 E84 E85 E86 E87 E88 E89 E90 E91 E92 E93 E94 E95 E96 E97 E98 E99 E100	F15 IT Service Desk Kingsford Legal Centre Learning & Teaching Unit @ UNSW Library Library Clinic Marketing Development Museum of Human Origins New South International Arts - Melbourne Place OpenStudy Clinic Physical Therapy Clinic Post Office Pfler Pool Plus (P3) - Pfler Services Religious Centre Research Services L3 Security Sports Association	F29 Student Affairs Event Office Squash Courts Swimming Pool The Learning Centre University Health Services UNSW Bookshop UNSW Sports & Recreation UNSW International Student Centre UNSW Scholarships UNSW Student Centre Various art events Childcare Centres Kangas House Home of Peck Center Tigger's Honeypot Onda House	F29 B7 B4 C22 E11 E16 E2 H13 F21 C23 C24 C25 C26 C27 C28 C29 C30 C31 C32 C33 C34 C35 C36 C37 C38 C39 C40 C41 C42 C43 C44 C45 C46 C47 C48 C49 C50 C51 C52 C53 C54 C55 C56 C57 C58 C59 C60 C61 C62 C63 C64 C65 C66 C67 C68 C69 C70 C71 C72 C73 C74 C75 C76 C77 C78 C79 C80 C81 C82 C83 C84 C85 C86 C87 C88 C89 C90 C91 C92 C93 C94 C95 C96 C97 C98 C99 C100
---	--	---	--	---	---	---	--	---	---

Addressing/tele services/maps/kensington/very/ksnr - campus map .dwg

**THE STAIR**



# THE STAIR

TODAY IN STUDIO  
STAIRS  
STUDENT WORK

# TODAY IN STUDIO

**Note:** Throughout the class students will be demonstrating modeling techniques using Google Sketchup.

**1.** Using the scheme you developed in SketchUp (and inspired by the stairs shown in the lecture) design two sets of stairs; one that goes from the above ground studio down to the showroom space and a second that comes from the below ground studio up to the showroom space.

**2.** Represent each stair with at least 2 sections. Keep all the notes, details and sections relating to each stair on one pair of facing pages. Or on two screens if you are using an iPhone, iPad or similar device.

**3.** In consultation with your tutor take another one of the sections created in the first studio session and design two sets of stairs for that scheme. Represent each of these new stairs with at least 2 sections.

By the end of the studio session you will have at least 8 sections (representing 4 sets of stairs).



ANDREW BARRY



RACHAEL WHITEREAD

**LIGHT STAIRS**























CENTRE POMPIDOU, PARIS





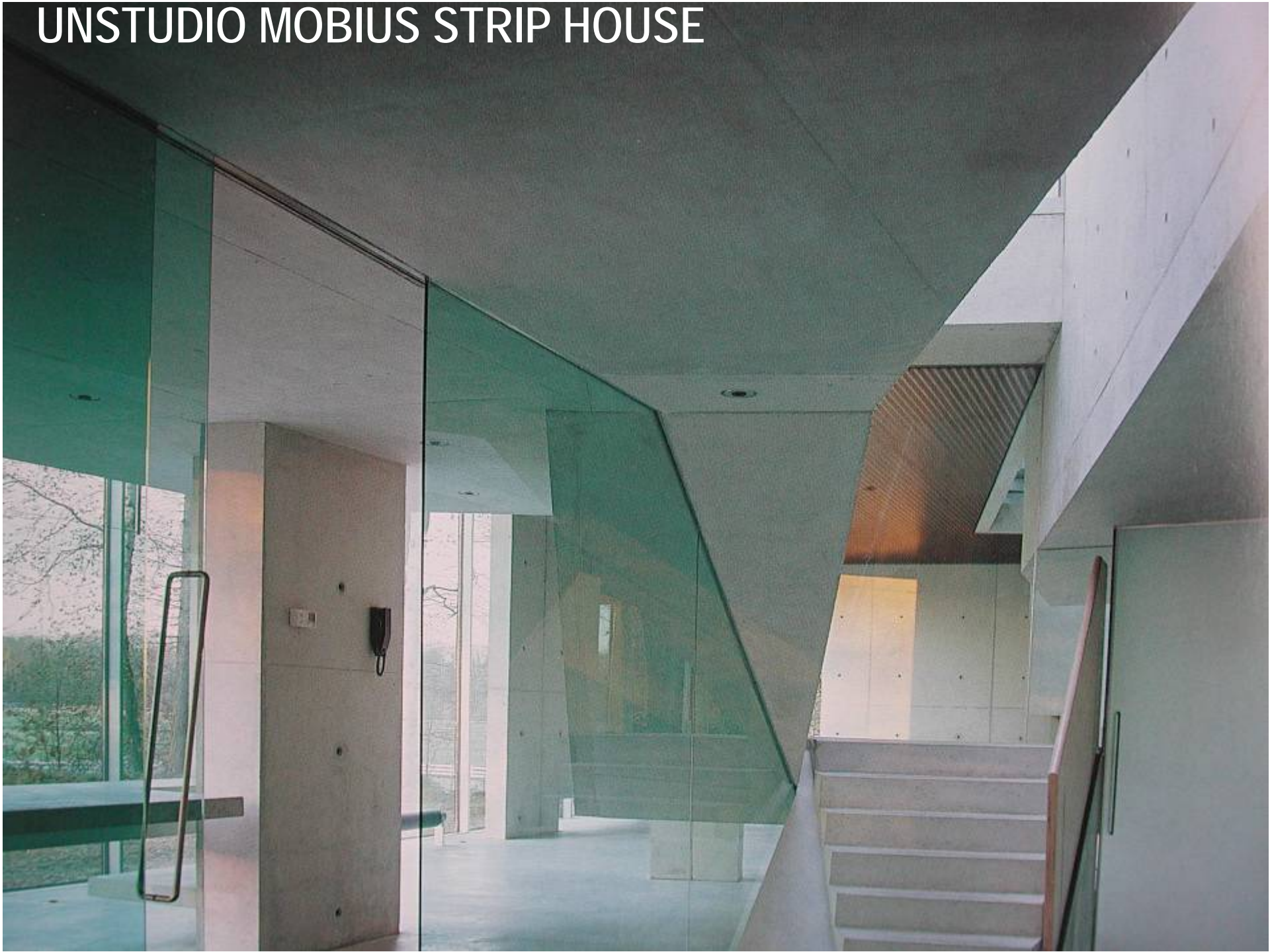
VILLA VPRO, MVRDV

**HEAVY STAIRS**





# UNSTUDIO MOBIUS STRIP HOUSE











LUIS BARRAGAN











PHILLIPPE STARK



CARLO SCARPA

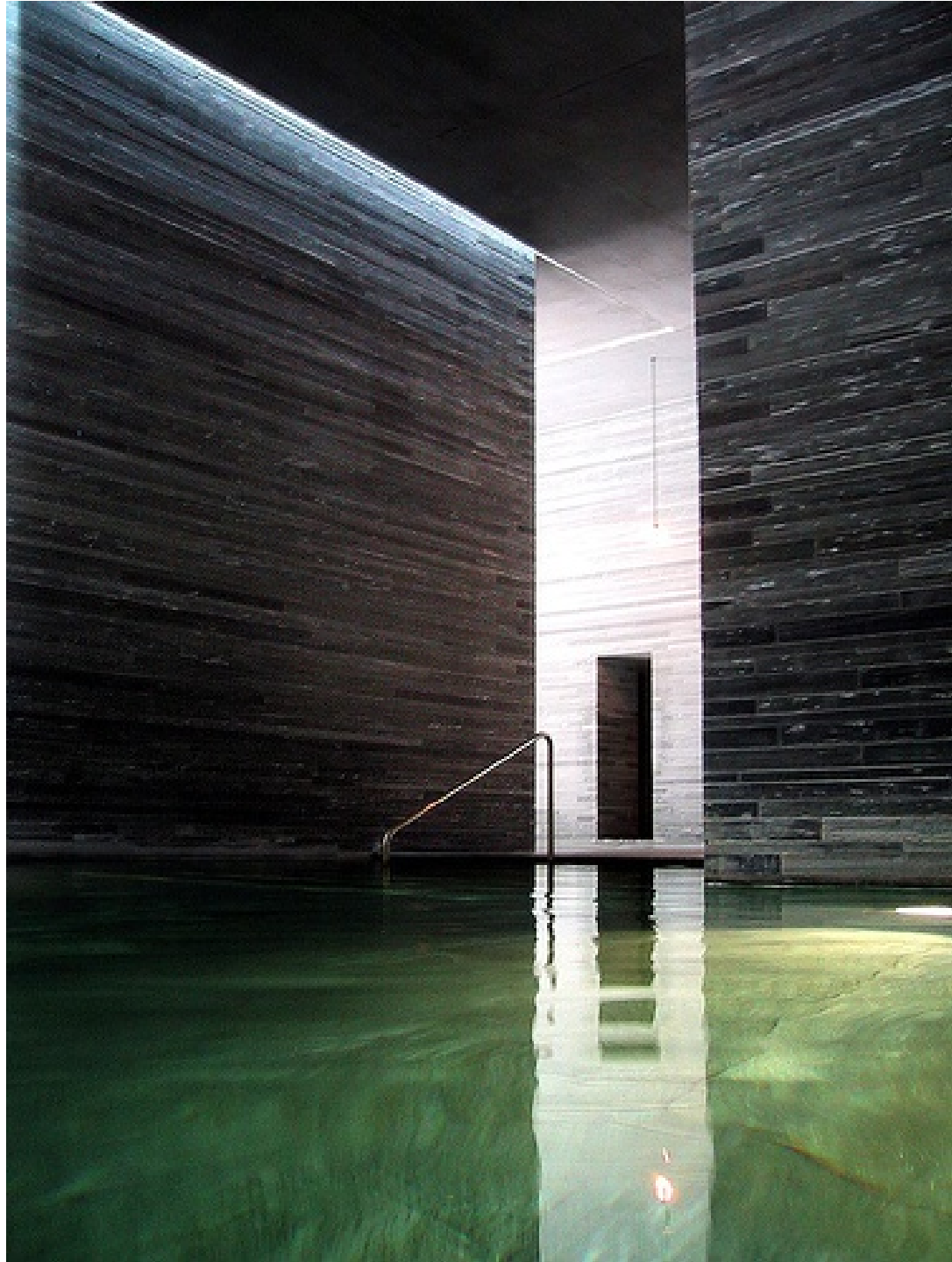








PETER ZUMTHOR  
THERMAL BATHS, VALS



# CANTILEVERED STAIRS

can·ti·le·ver [kan-tl-ee-ver]

Noun

1. Any rigid structural member projecting from a vertical support, especially one in which the projection is great in relation to the depth, so that the upper part is in tension and the lower part in compression.
2. Building Trades, Civil Engineering: any rigid construction extending horizontally well beyond its vertical support, used as a structural element of a bridge (cantilever bridge) building foundation, etc.
3. Aeronautics: A form of wing construction in which no external bracing is used.
4. Architecture: A bracket for supporting a balcony, cornice, etc.

World English Dictionary (Collins)

1. A beam, girder, or structural framework that is fixed at one end and is free at the other













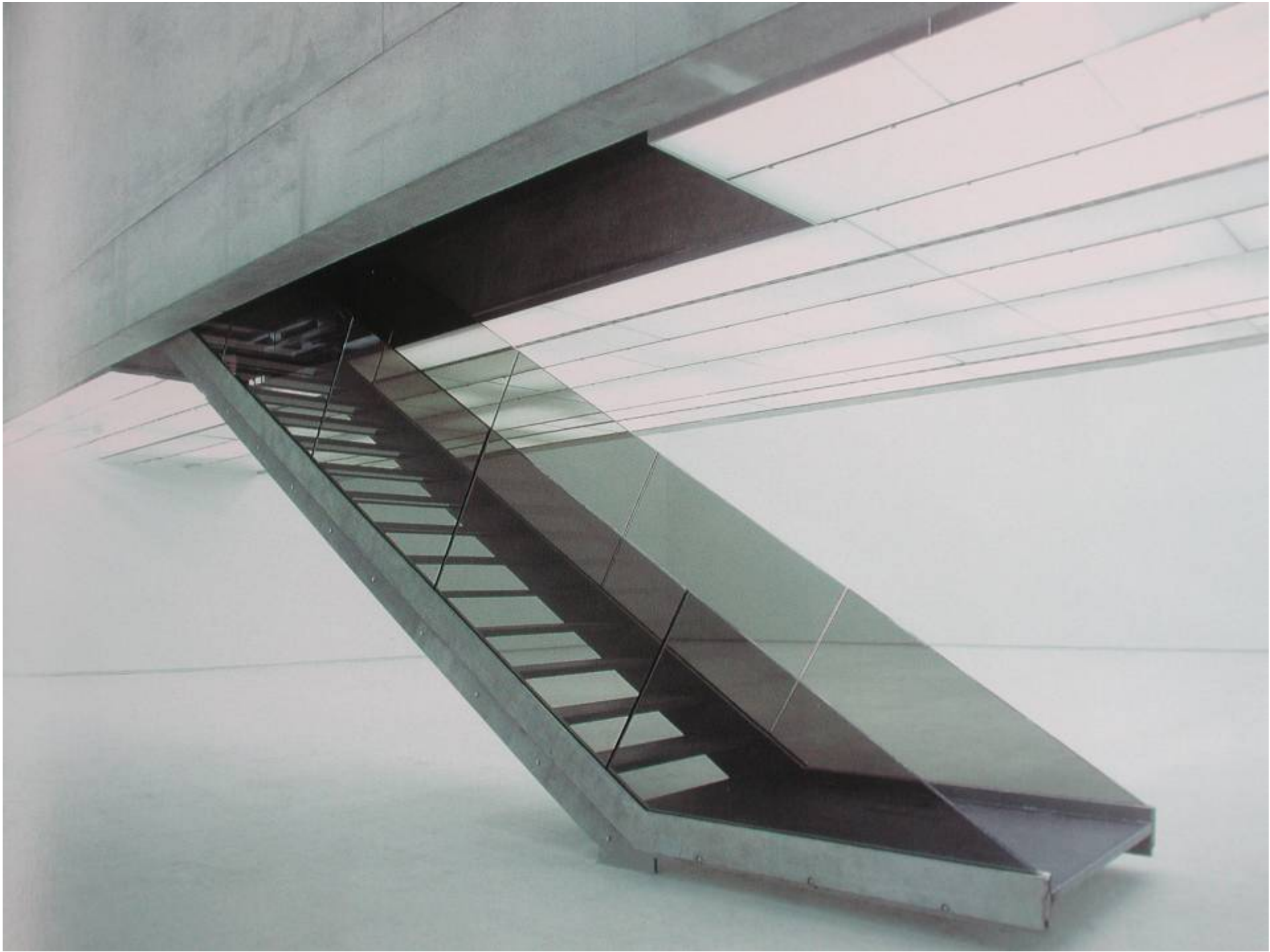
















LE CORBUSIER. CHANDIGARH



**OUTSIDE STAIRS**



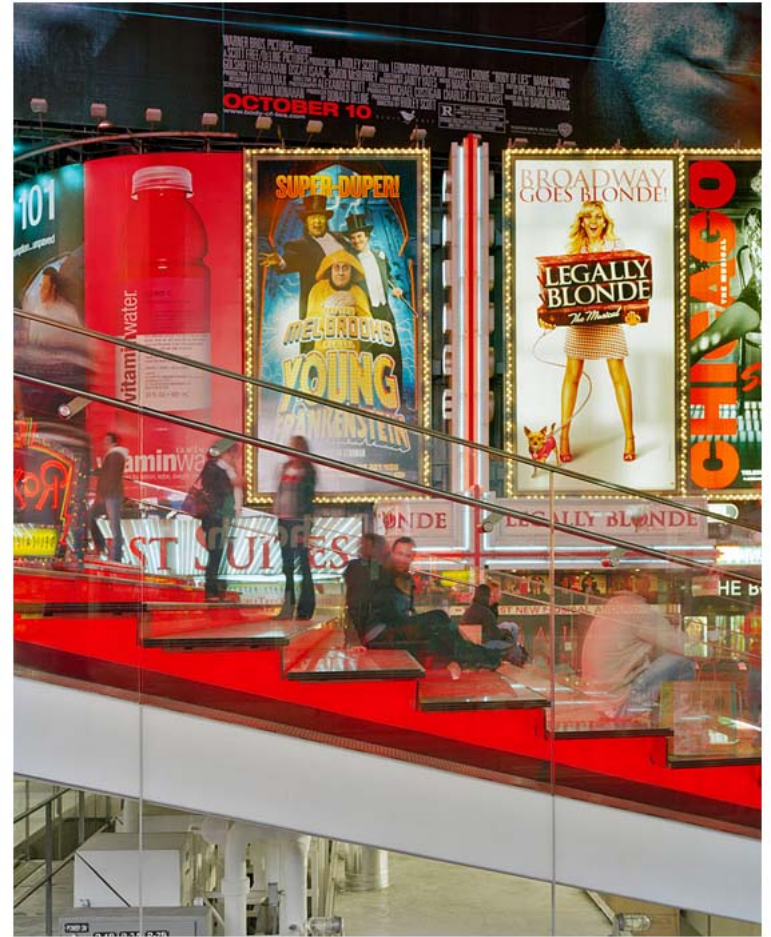
PERKINS EASTMAN. NYC + John Choi and Tai Ropiha. Sydney





TROY DONOVAN



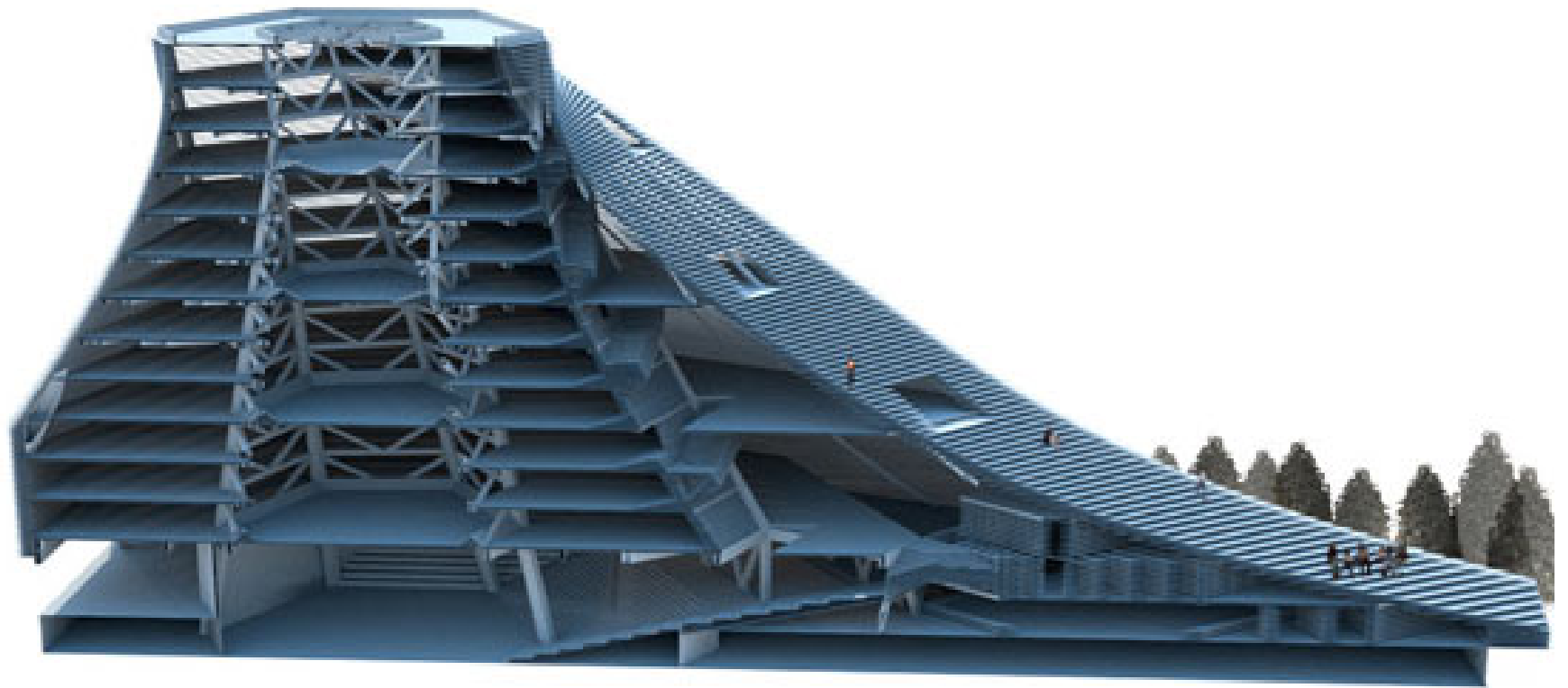






DETAILS











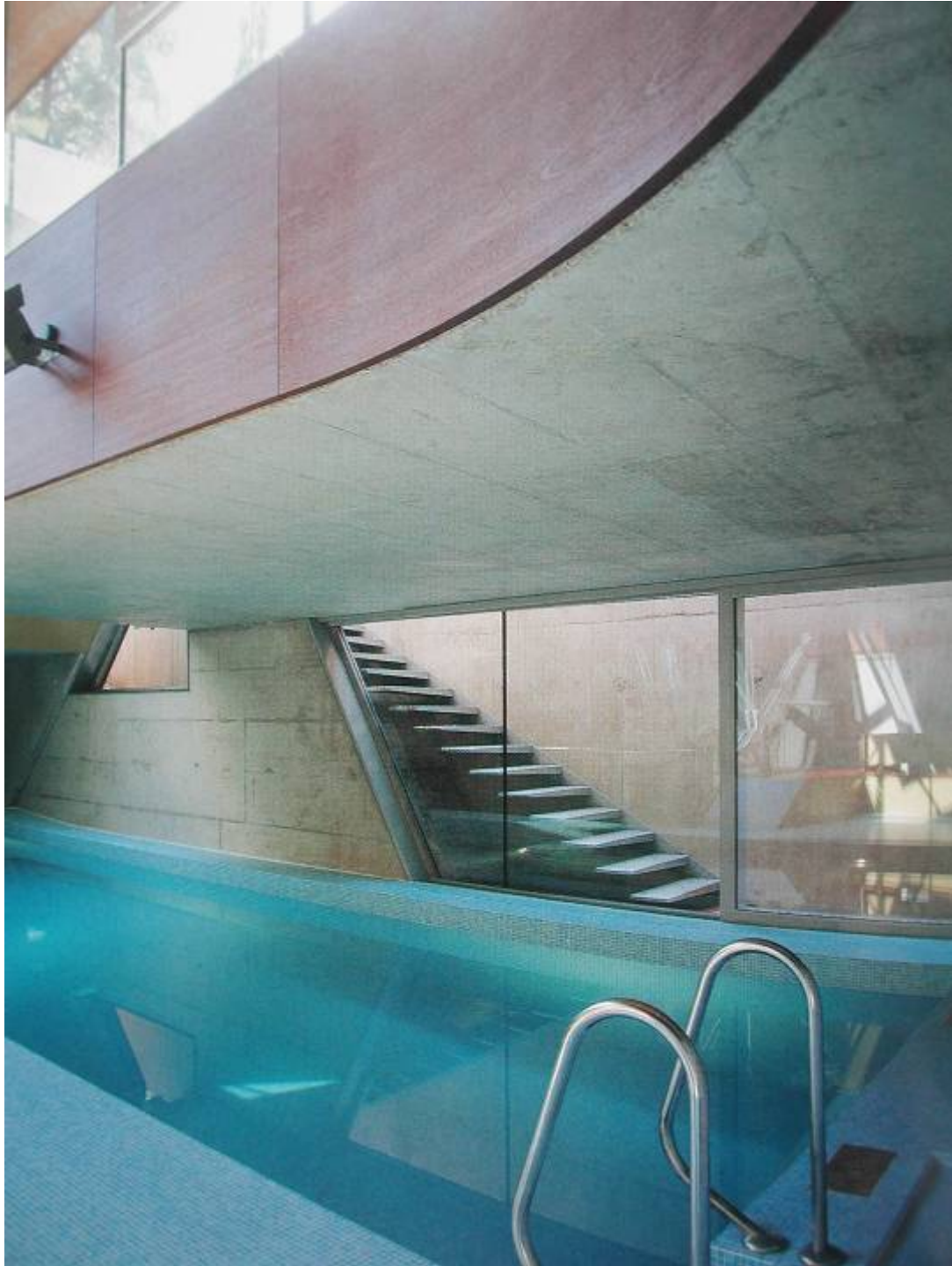


LAKE COMO. ITALY













CATHEDRAL. MILAN. ITALY

COLOSSEUM. ROME













HOUSE ON MYKONOS. MARC CORBIAU

















GANGES RIVER. INDIA

















ROMAN RUINS. BATH. ENGLAND





CARLO SCARPA











OPERA HOUSE. SYDNEY















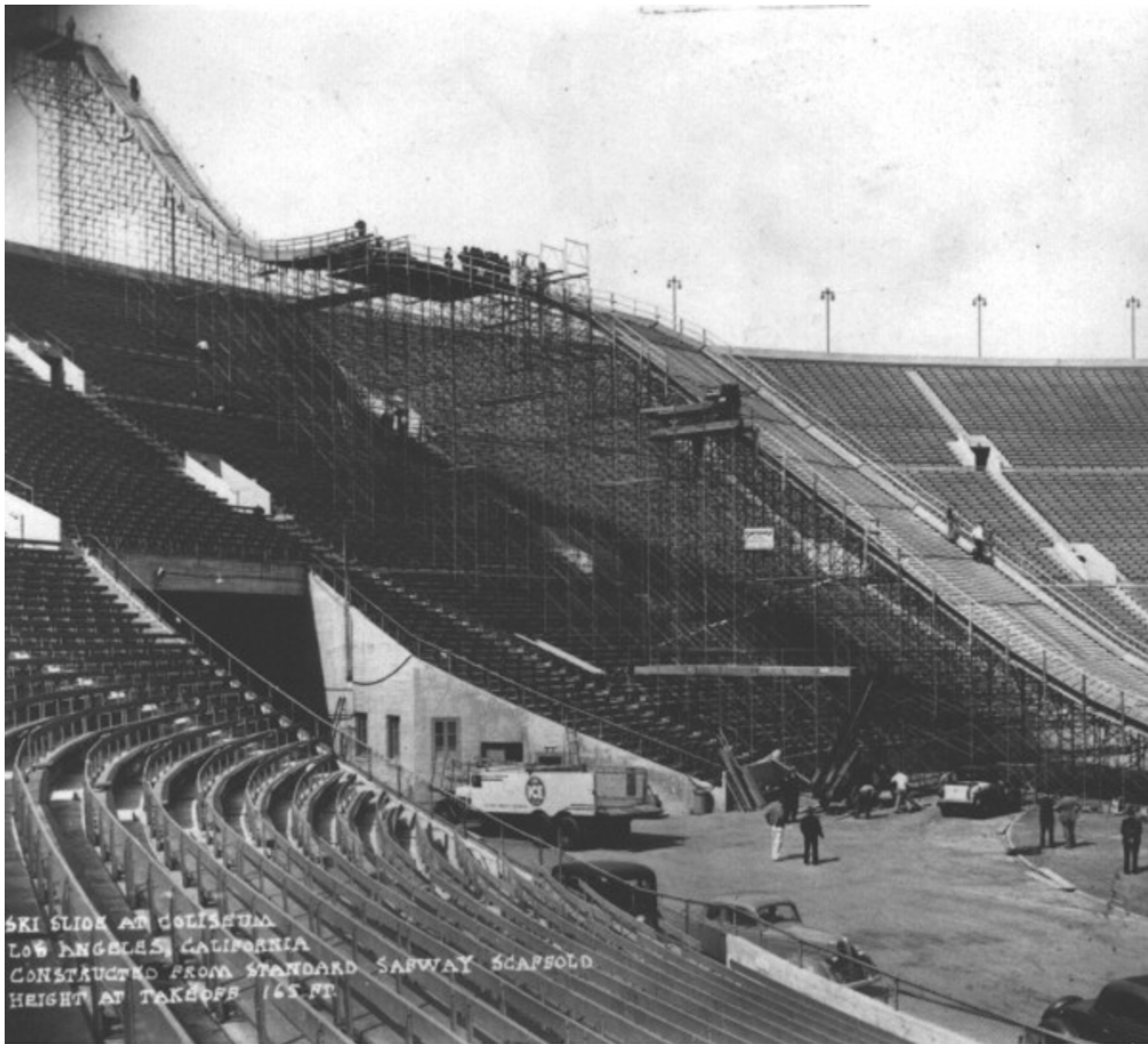












SKI SLIDE AT COLISEUM  
LOS ANGELES, CALIFORNIA  
CONSTRUCTED FROM STANDARD SAWWAY SCAFFOLD  
HEIGHT AT TAKEOFF 165 FT.







**SPIRAL STAIRS**

**CASA ROTA  
MANUEL OCANA  
ARQUITECTOS**













HERZOG AND DE MEURON



STEVEN HOLL



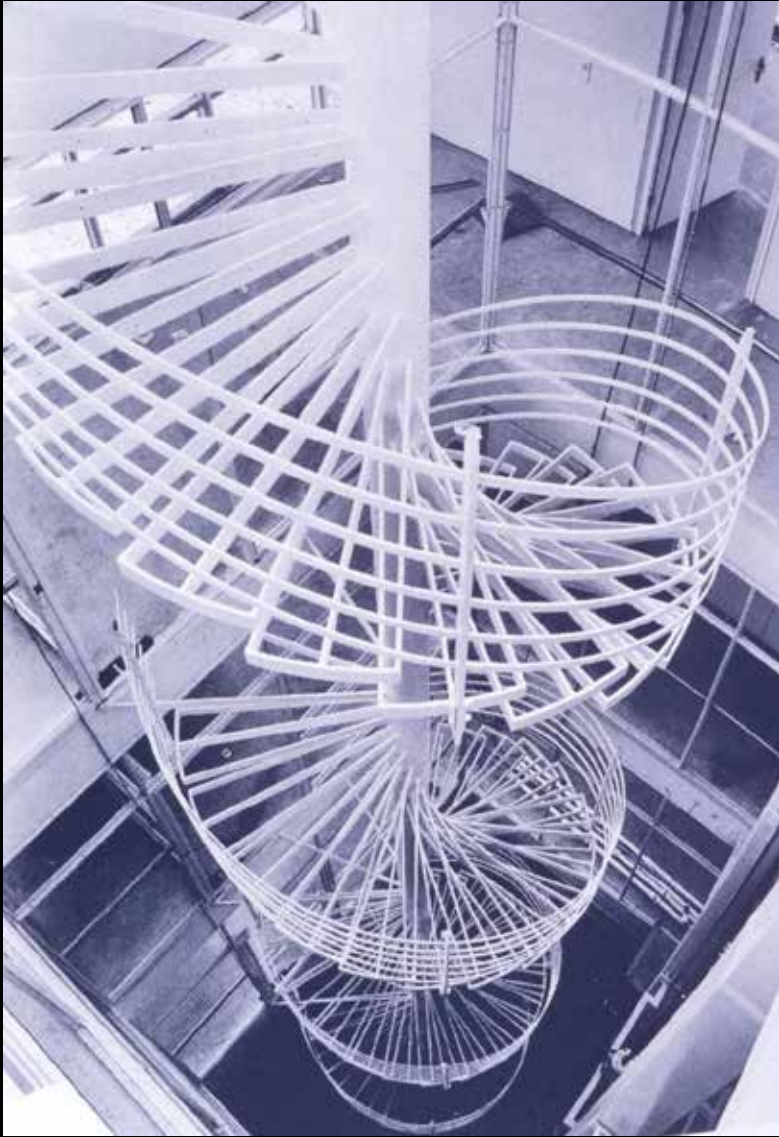




TATE MODERN  
LONDON







**HOUSE AT BORDEAUX.  
REM KOOLHAAS**







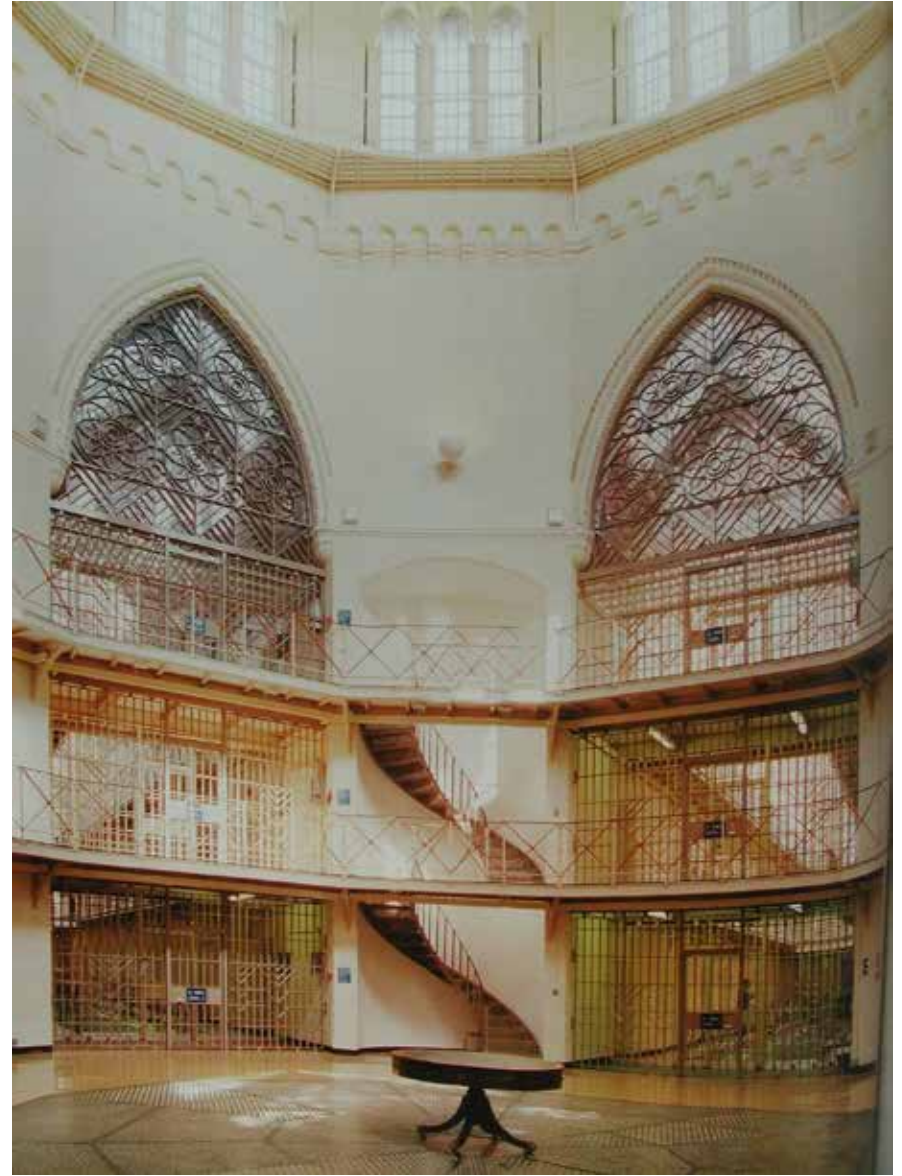
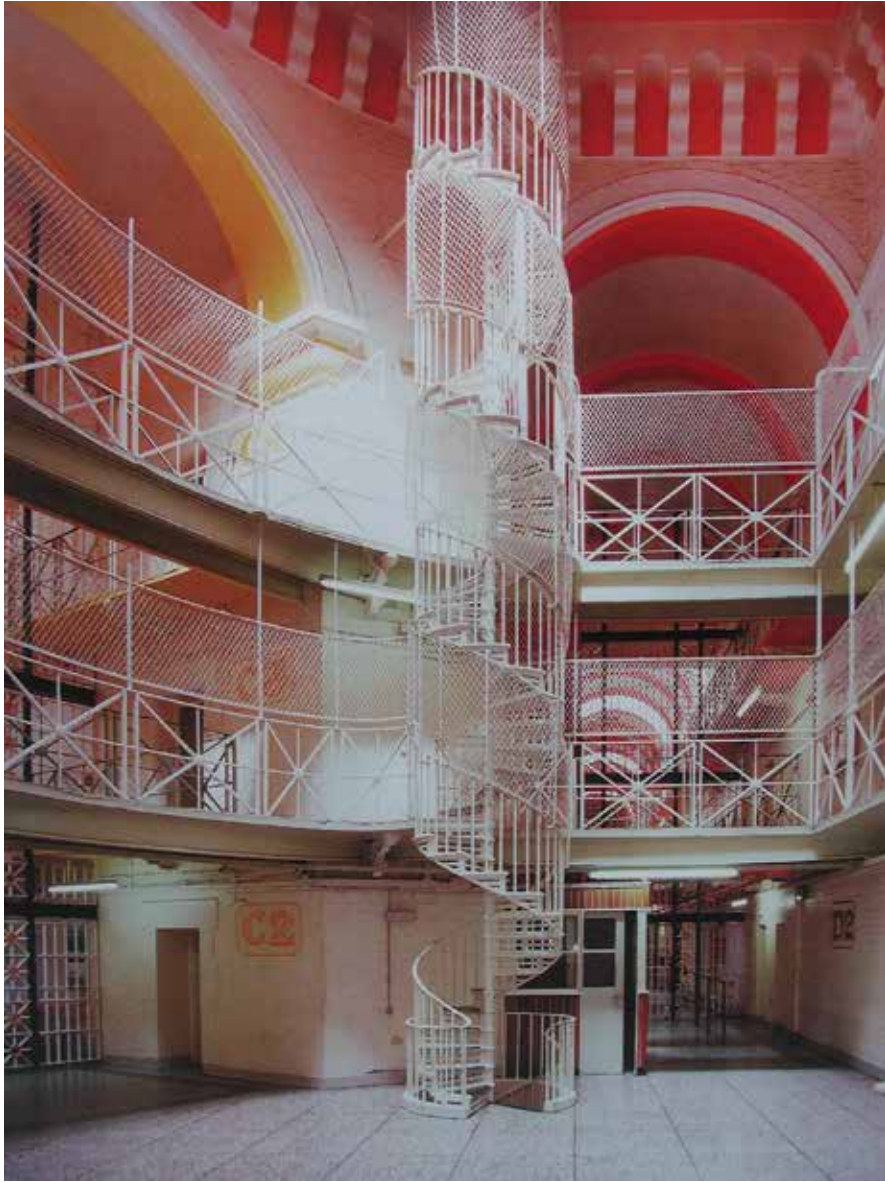
TETSUYA NAKAZONO





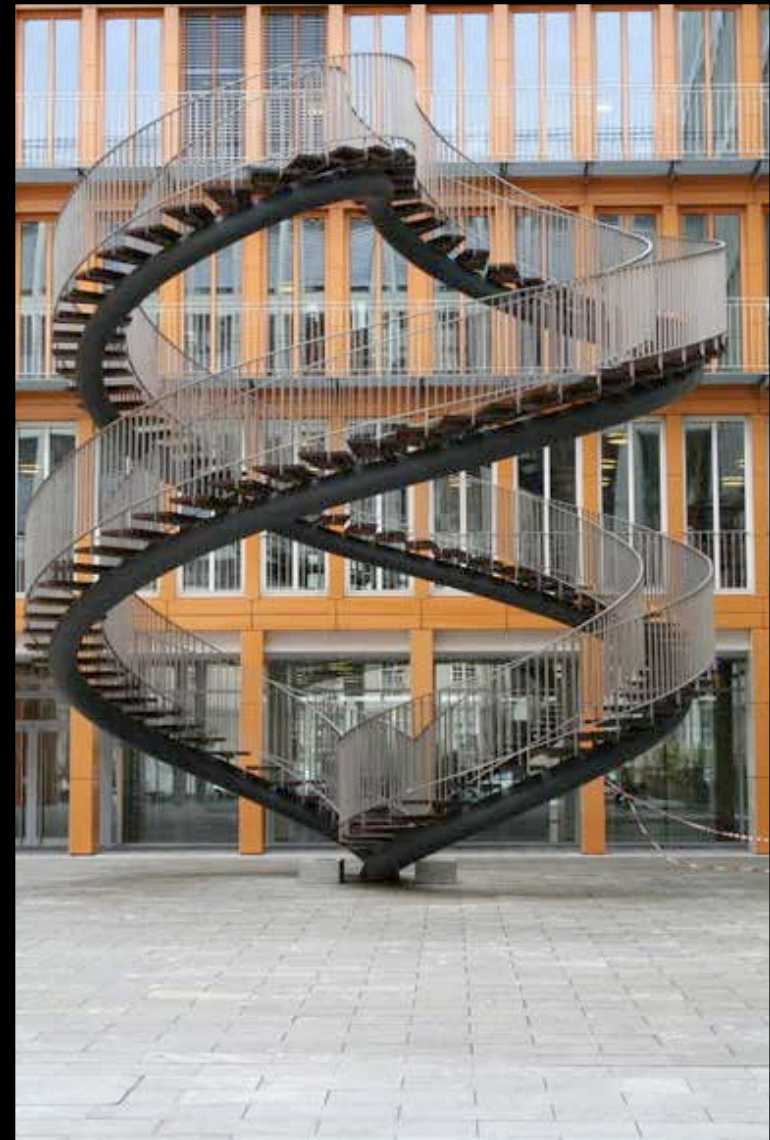
TETSUYA NAKAZONO











OLAFUR ELIASSON. MUNICH





**ROSS LOVEGROVE. DNA STAIRCASE.**

**SHOP STAIRS**



REM KOOLHAAS. OMA. PRADA. NYC





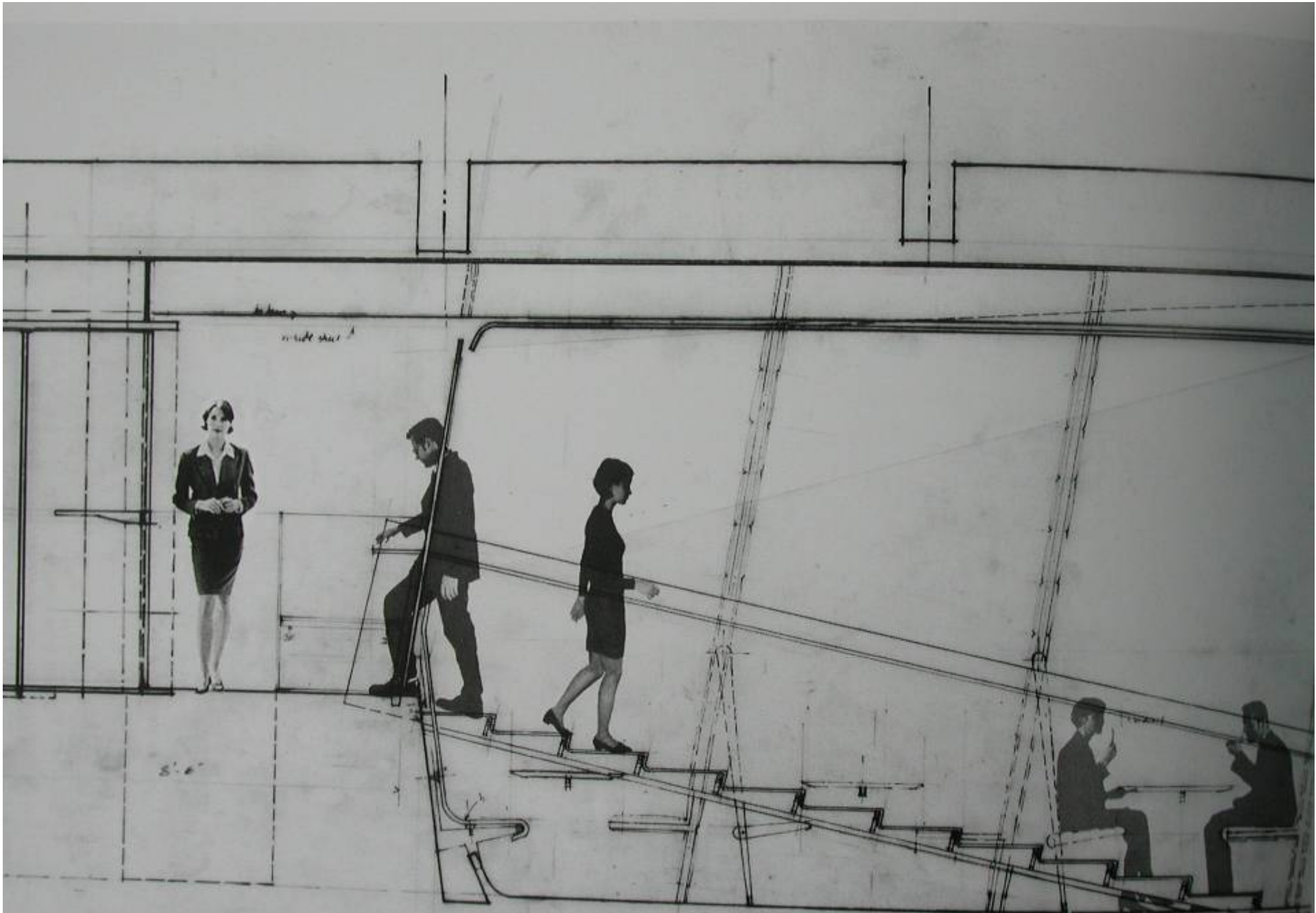












DILLER + SCOFIDIO









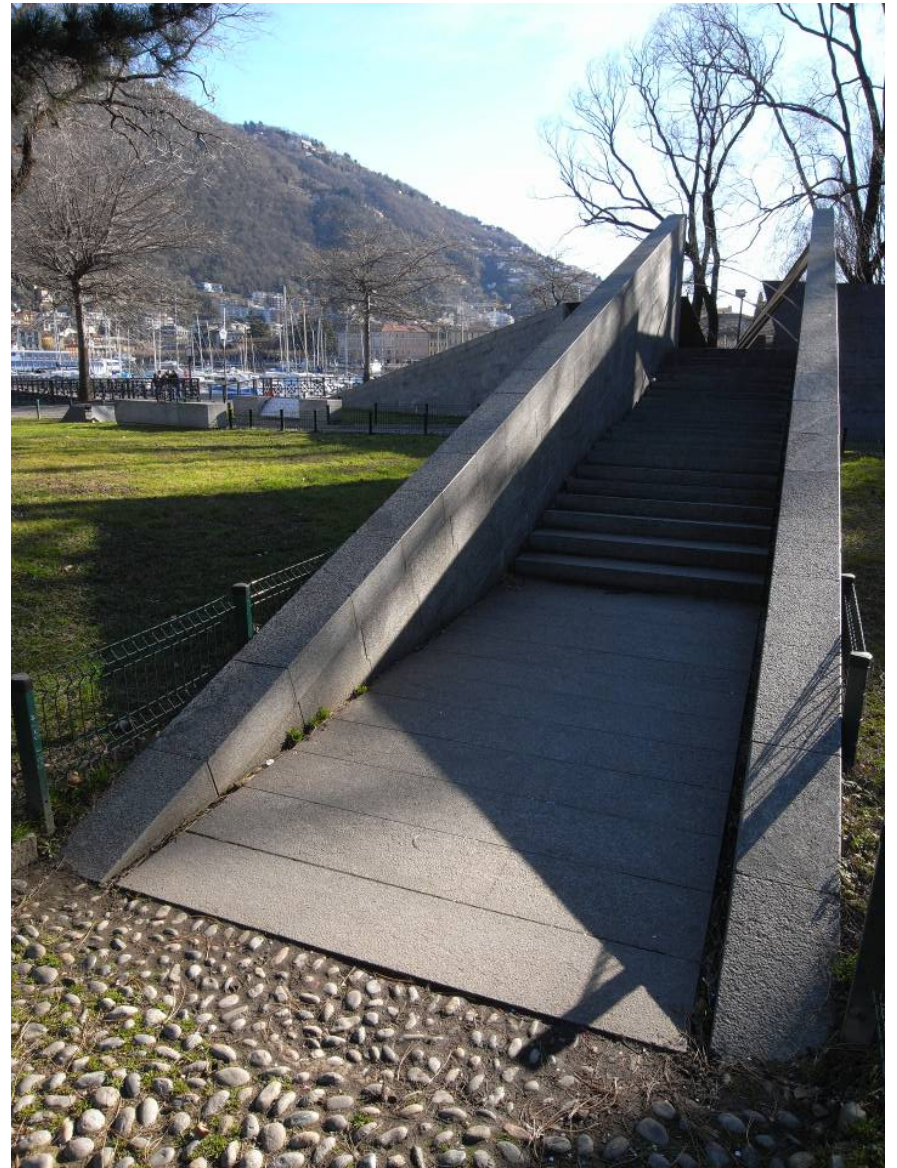
# MONUMENTAL STAIRS



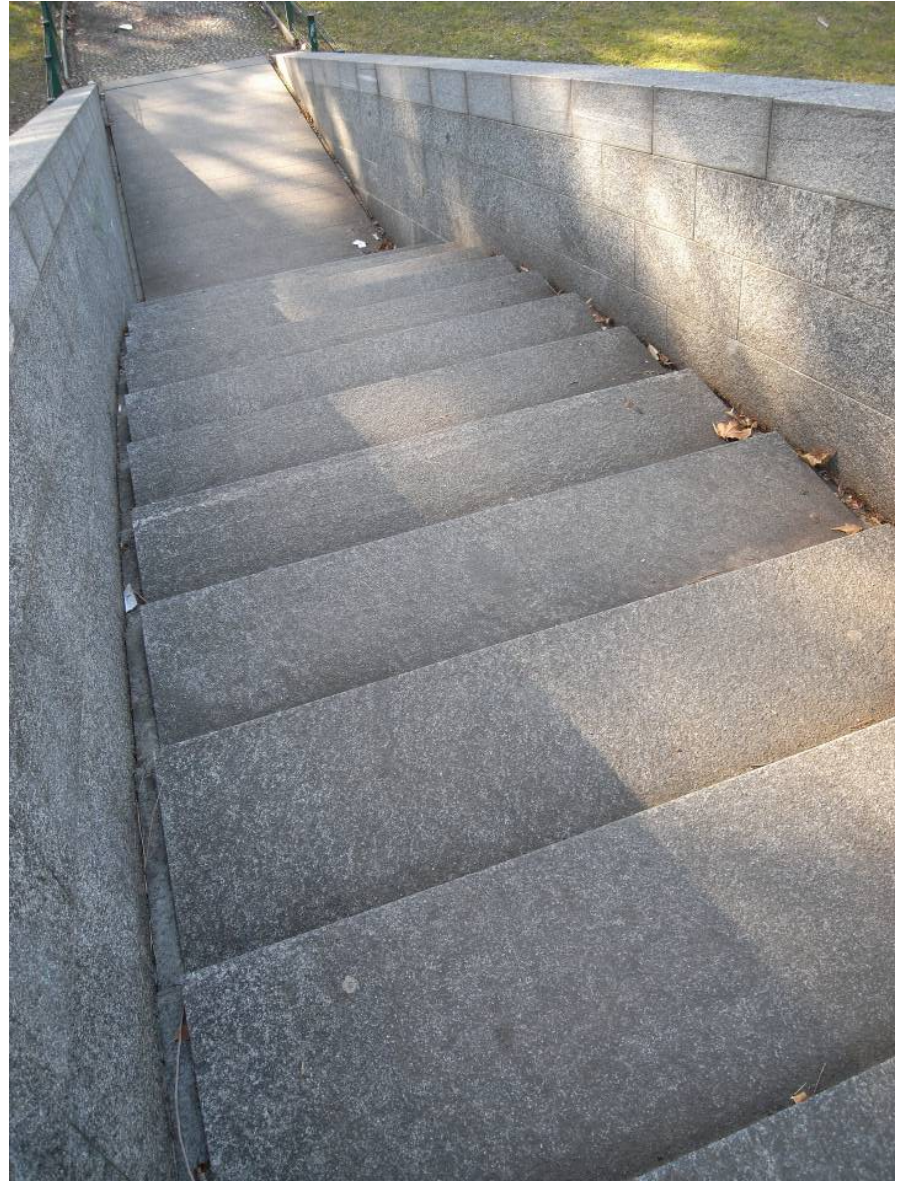


LAKE COMO. ITALY

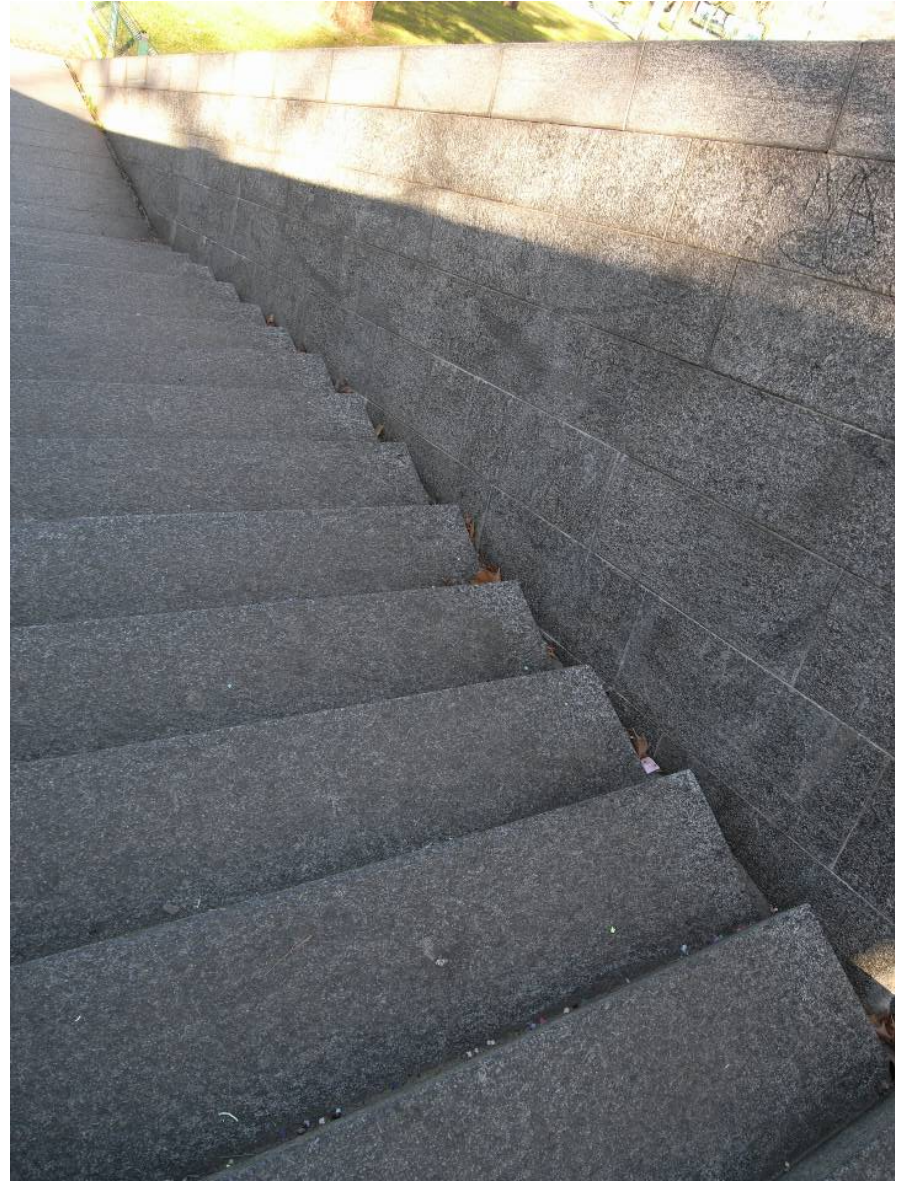






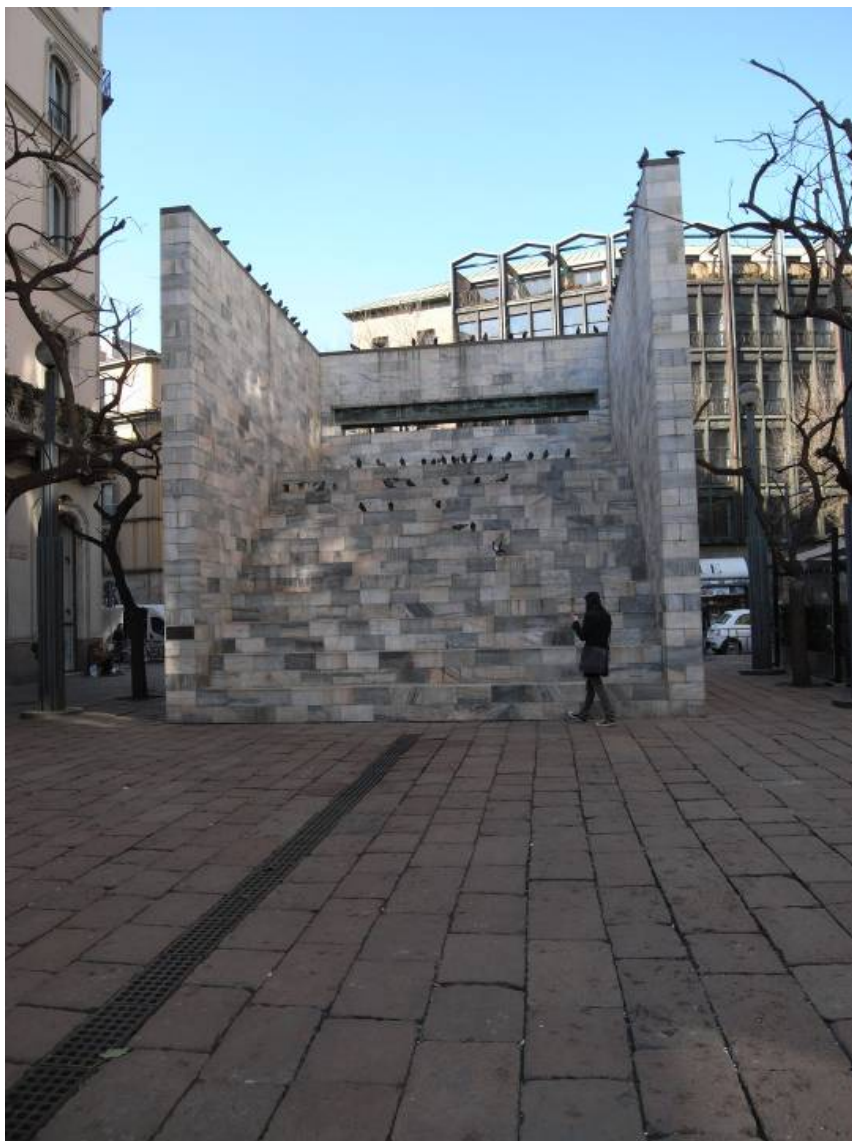






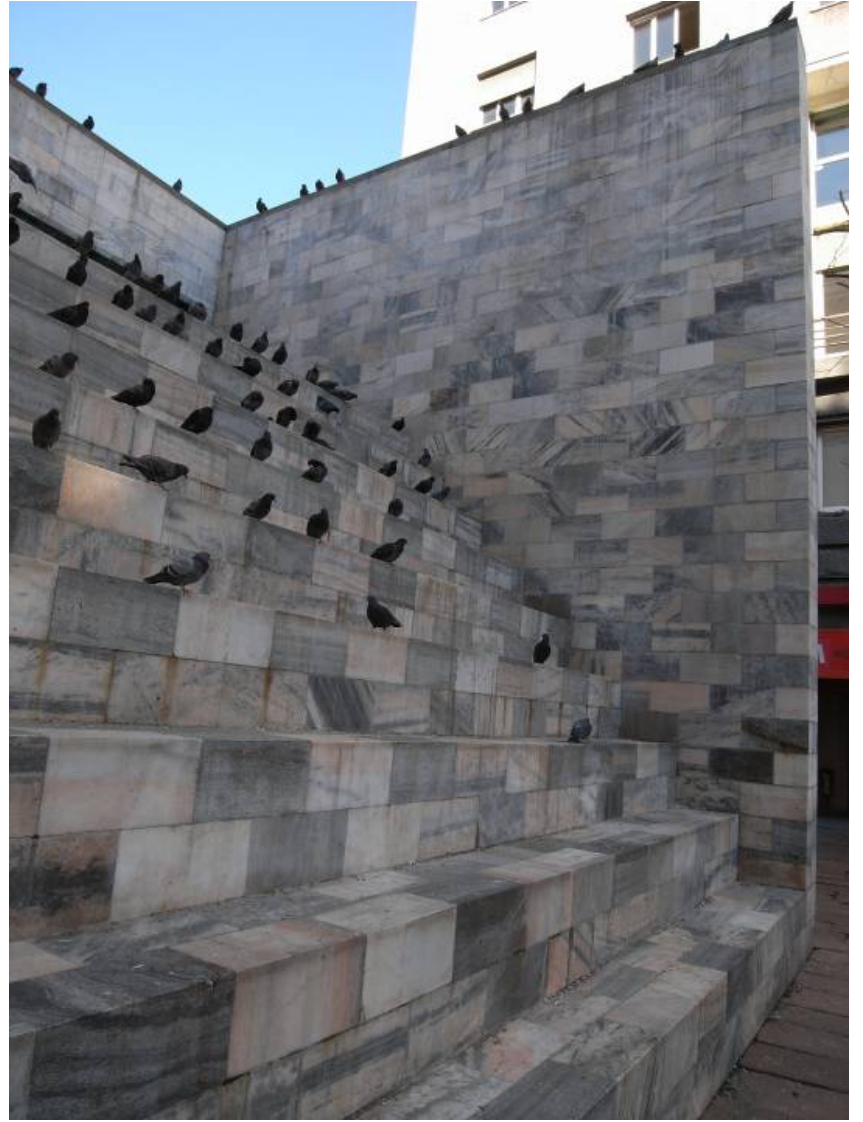
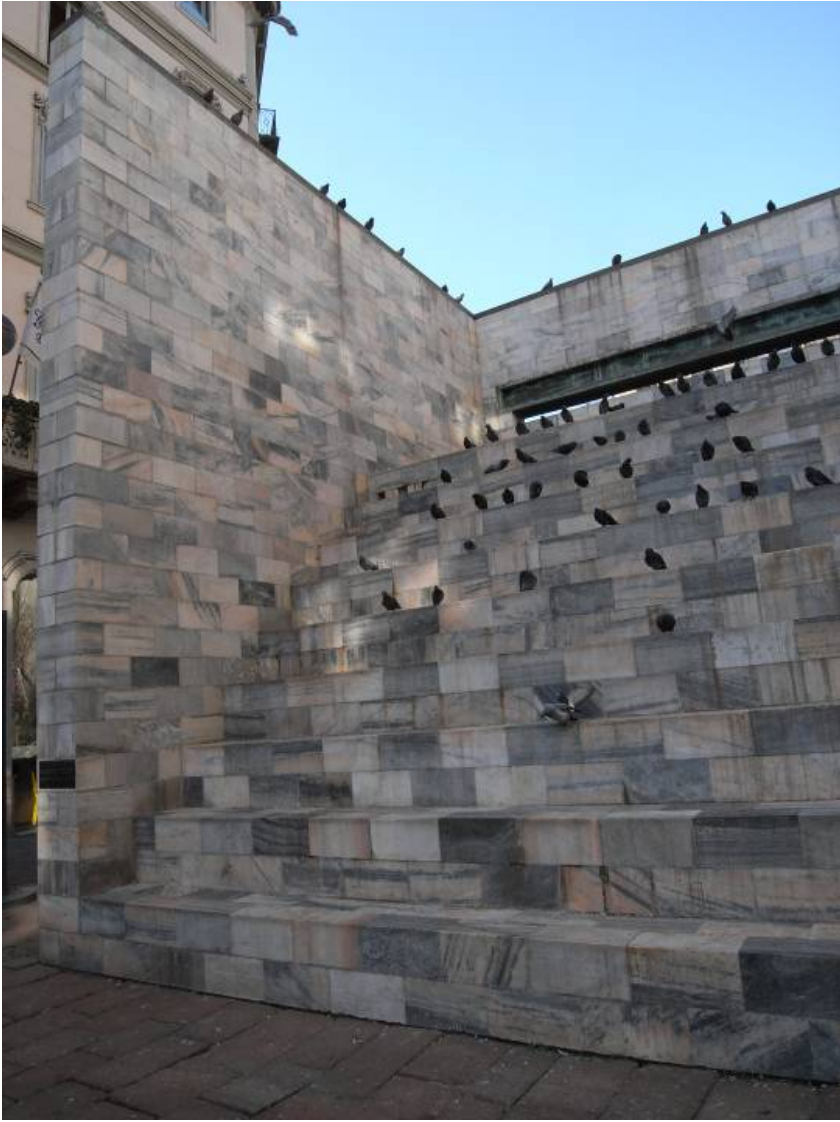






**ALDO ROSSI. MILAN**

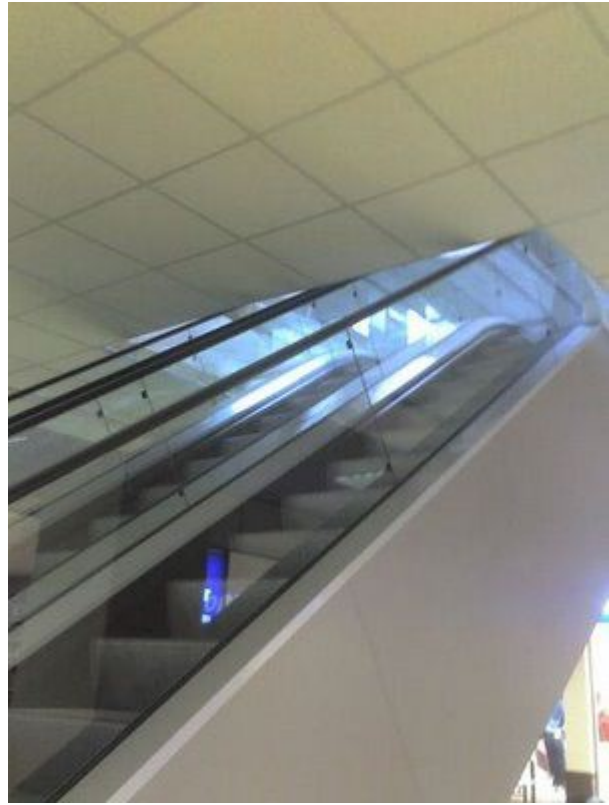








**FAILURE**







**CASTLEVECCHIO**

**CASE STUDY**

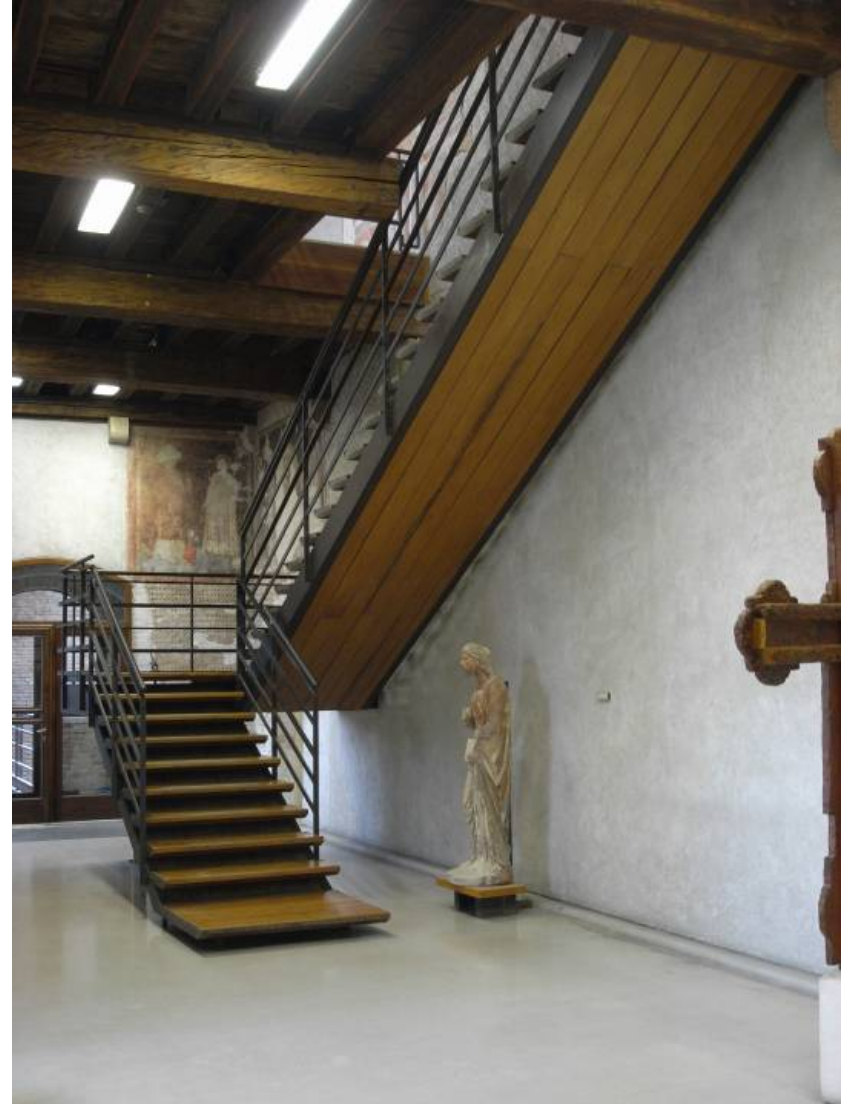


**CARLO SCARPA**





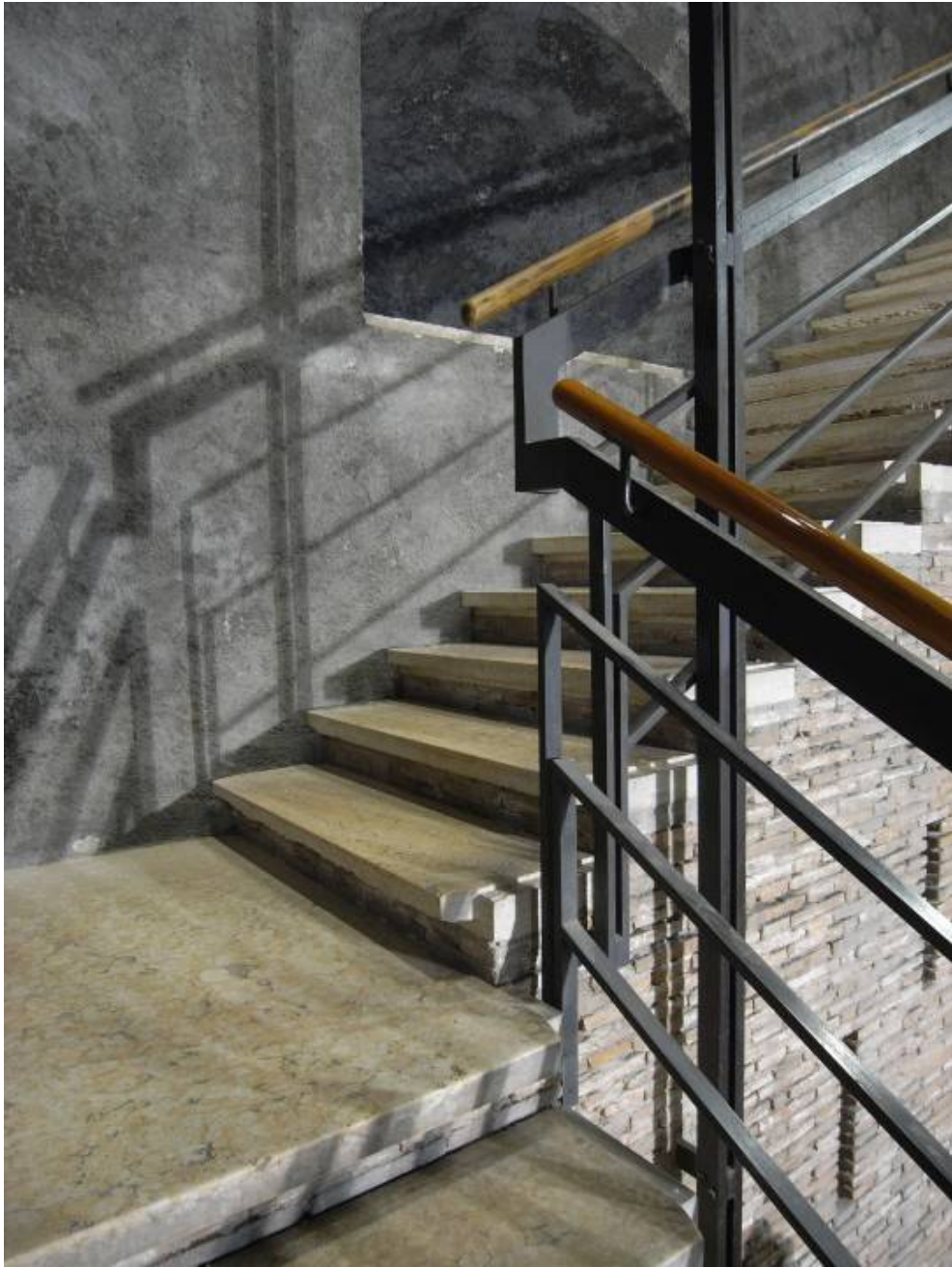








































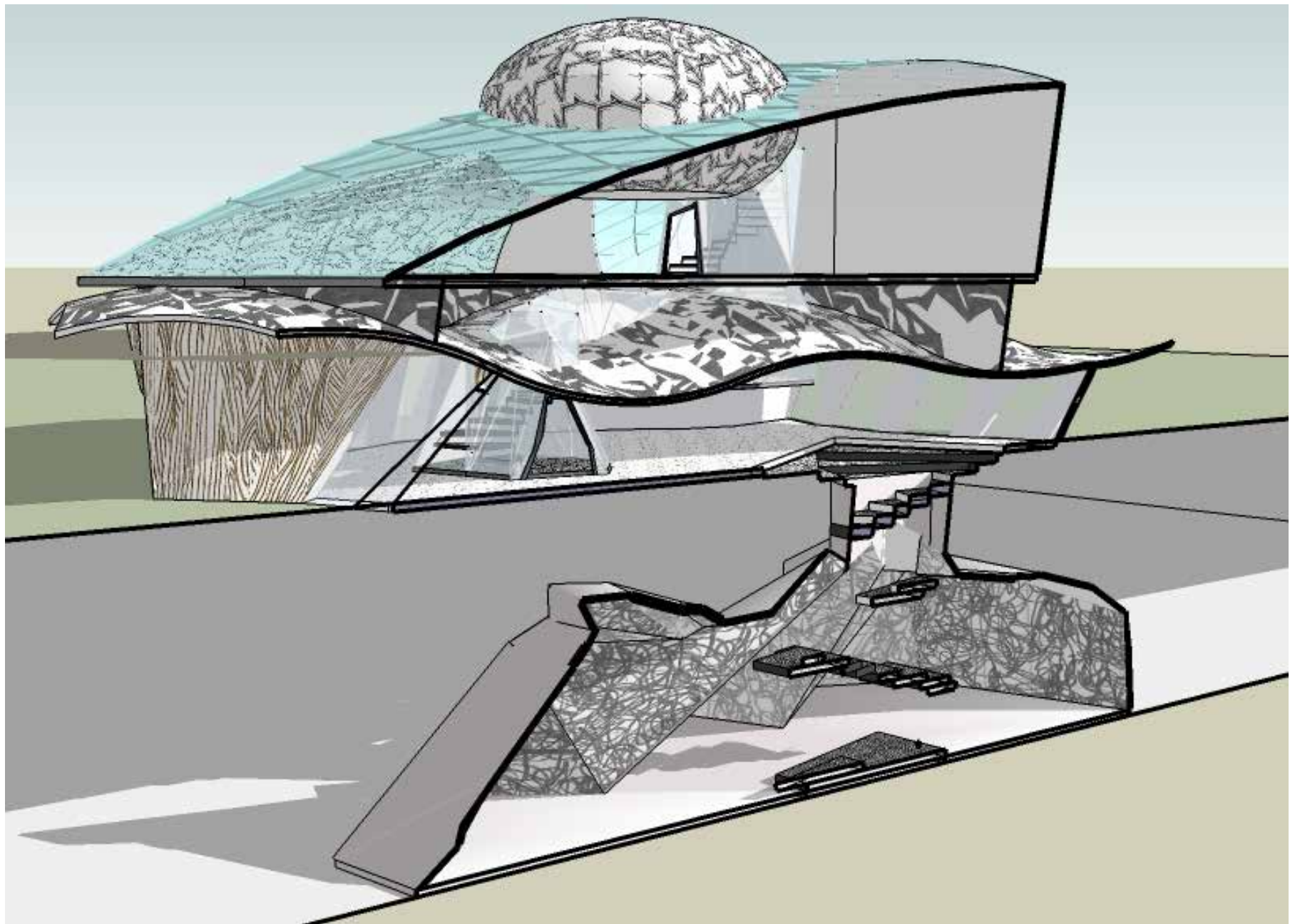




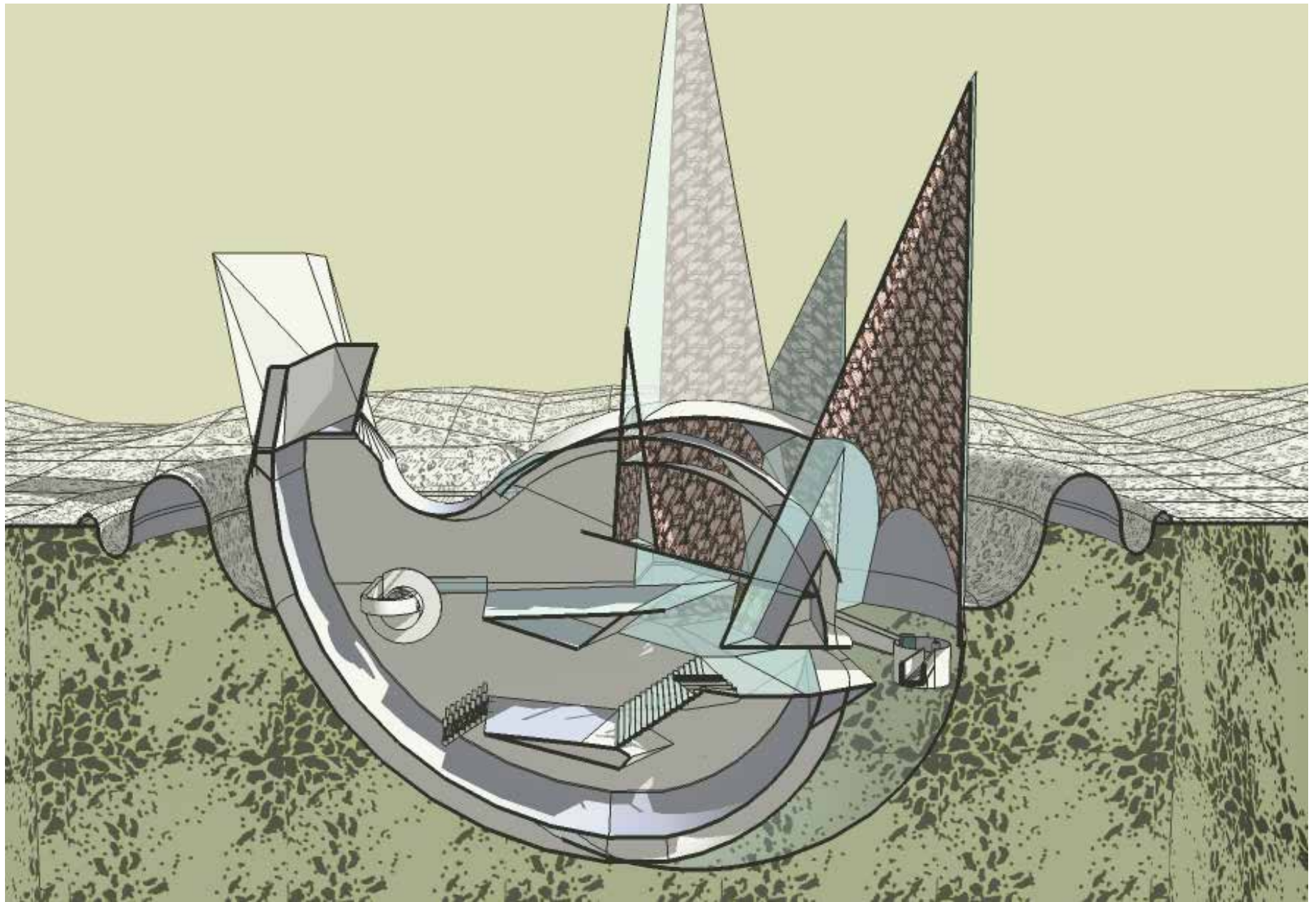


ARCHITECTURE DESIGN STUDIO ARCH1101

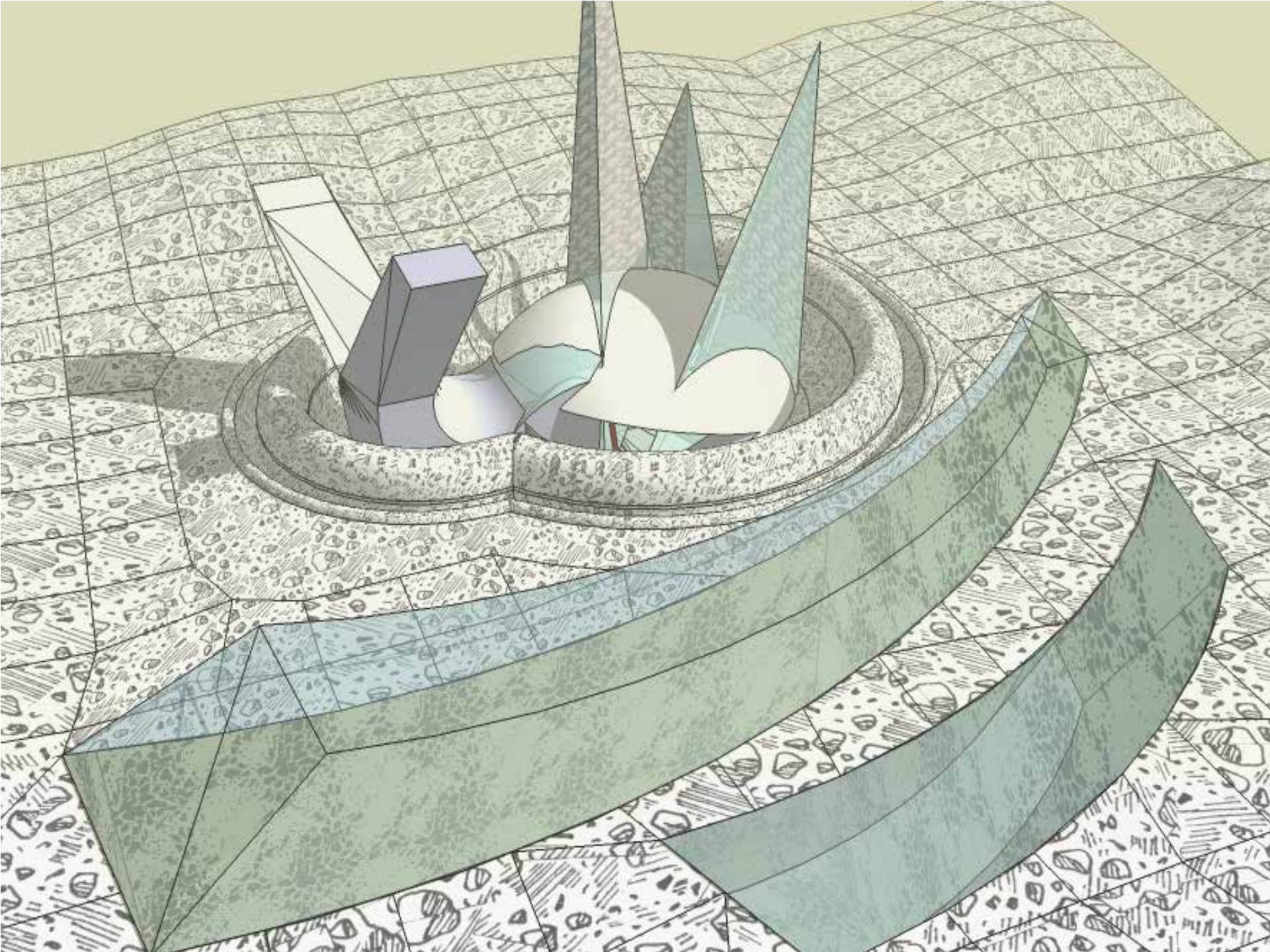
**STUDENT WORK**







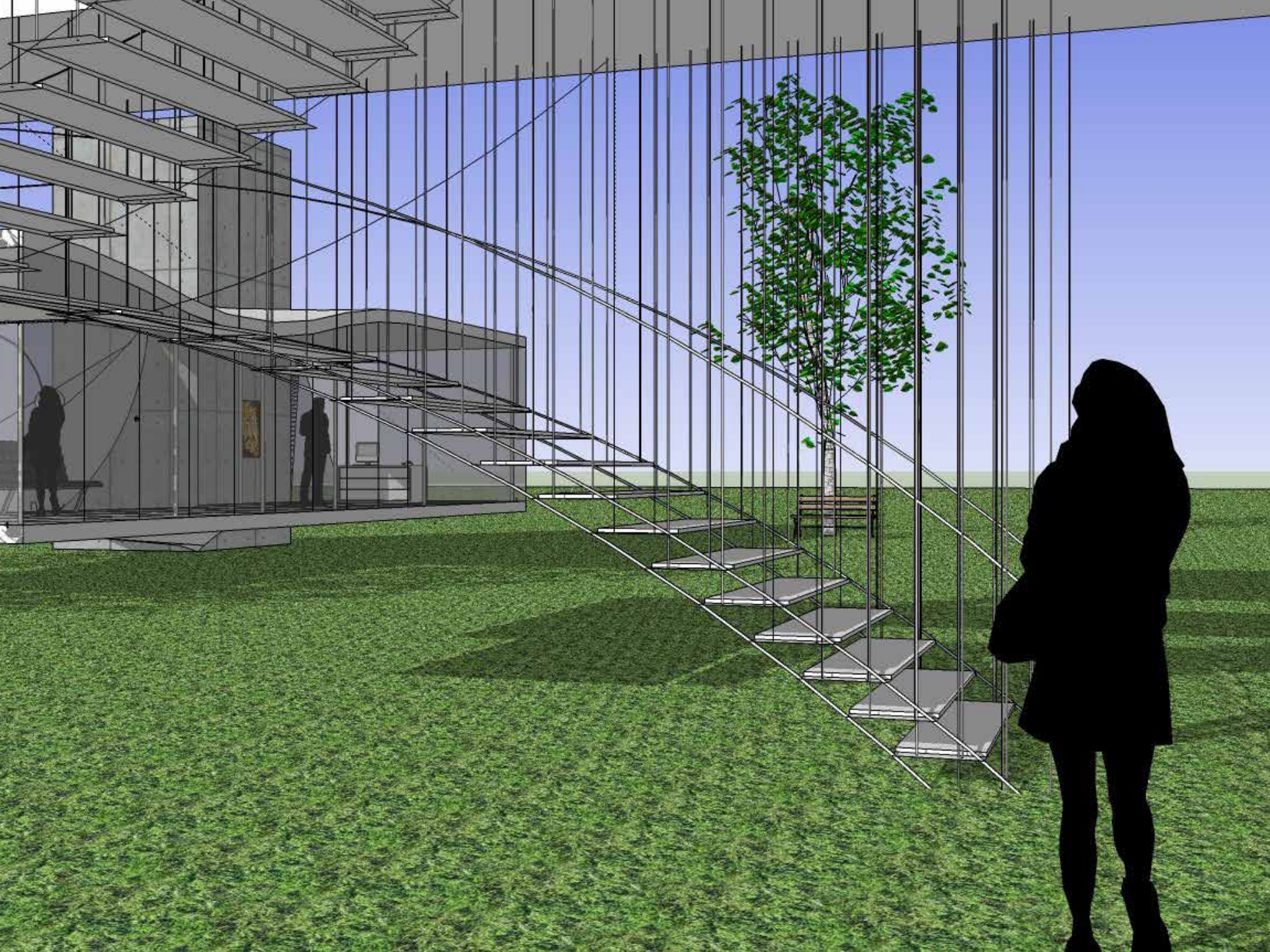








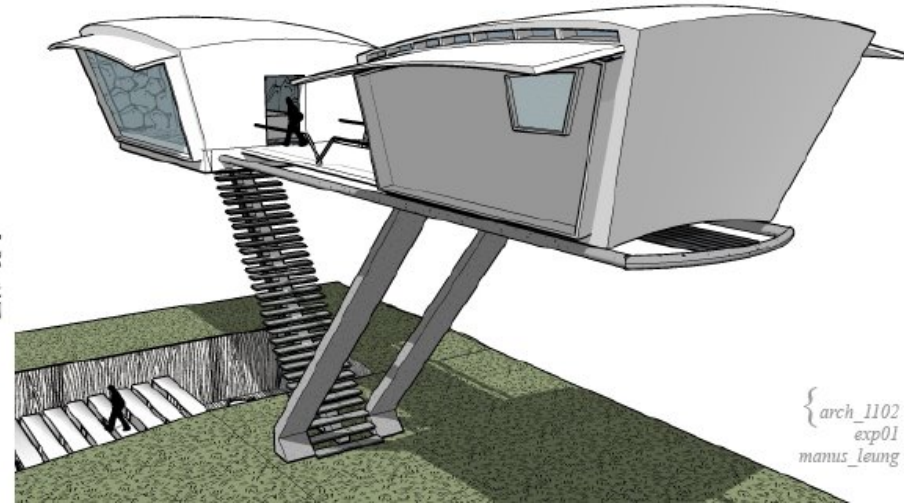
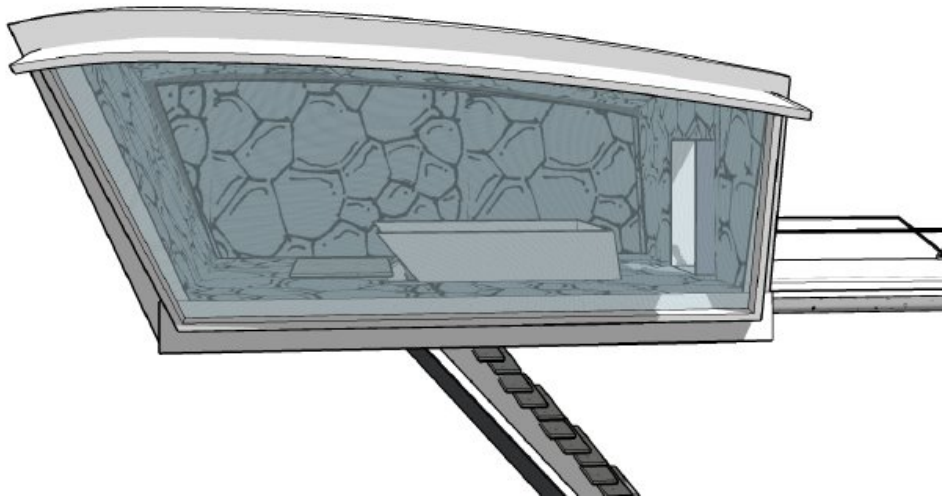
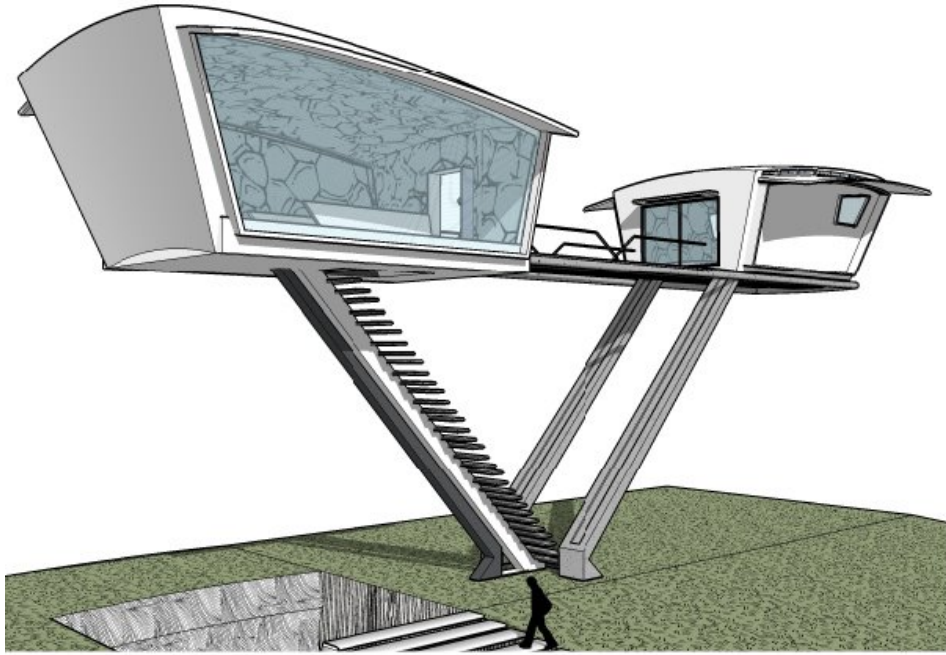




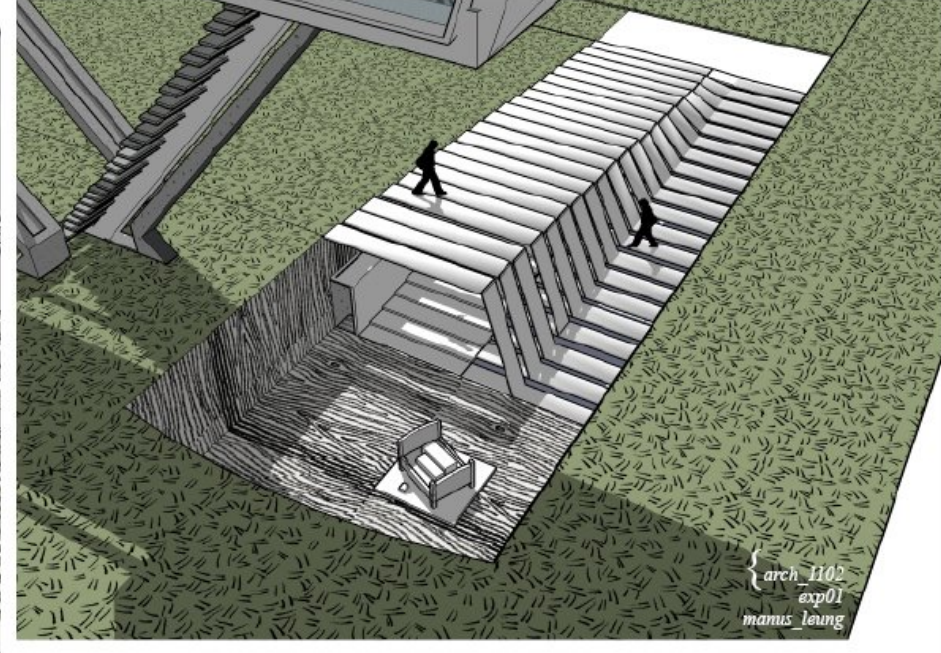
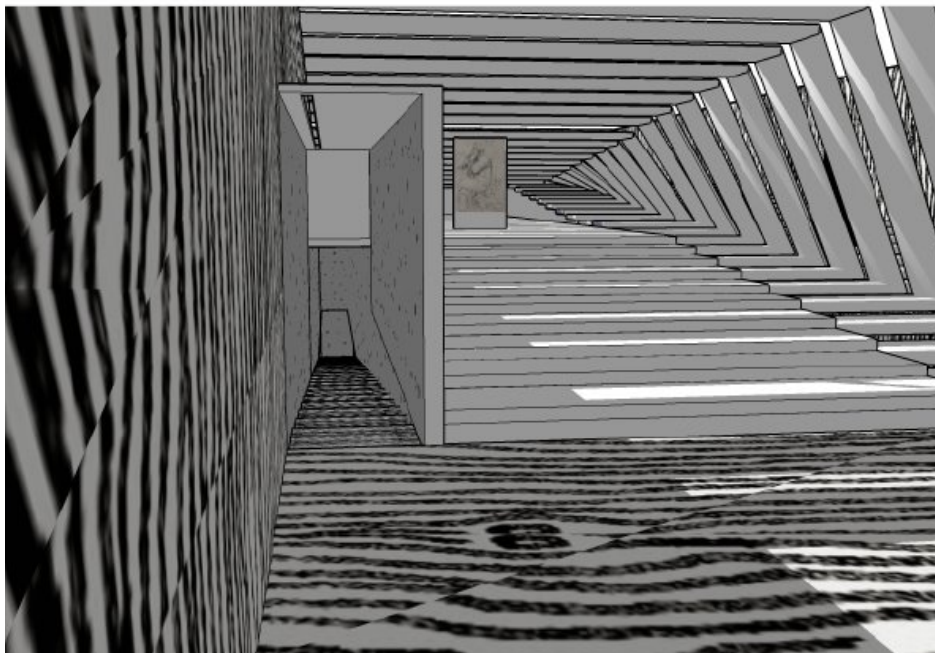
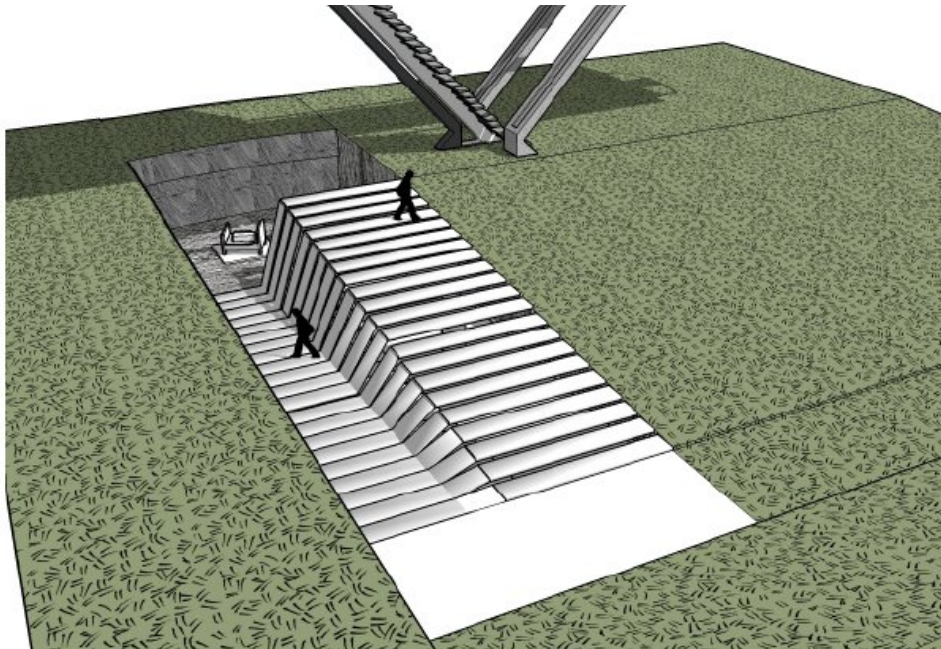
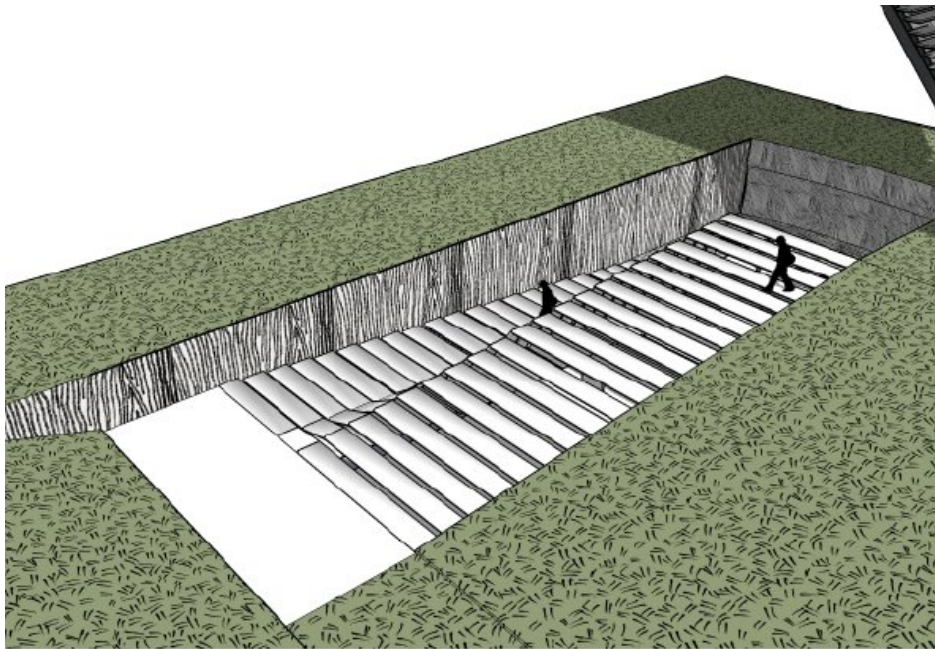




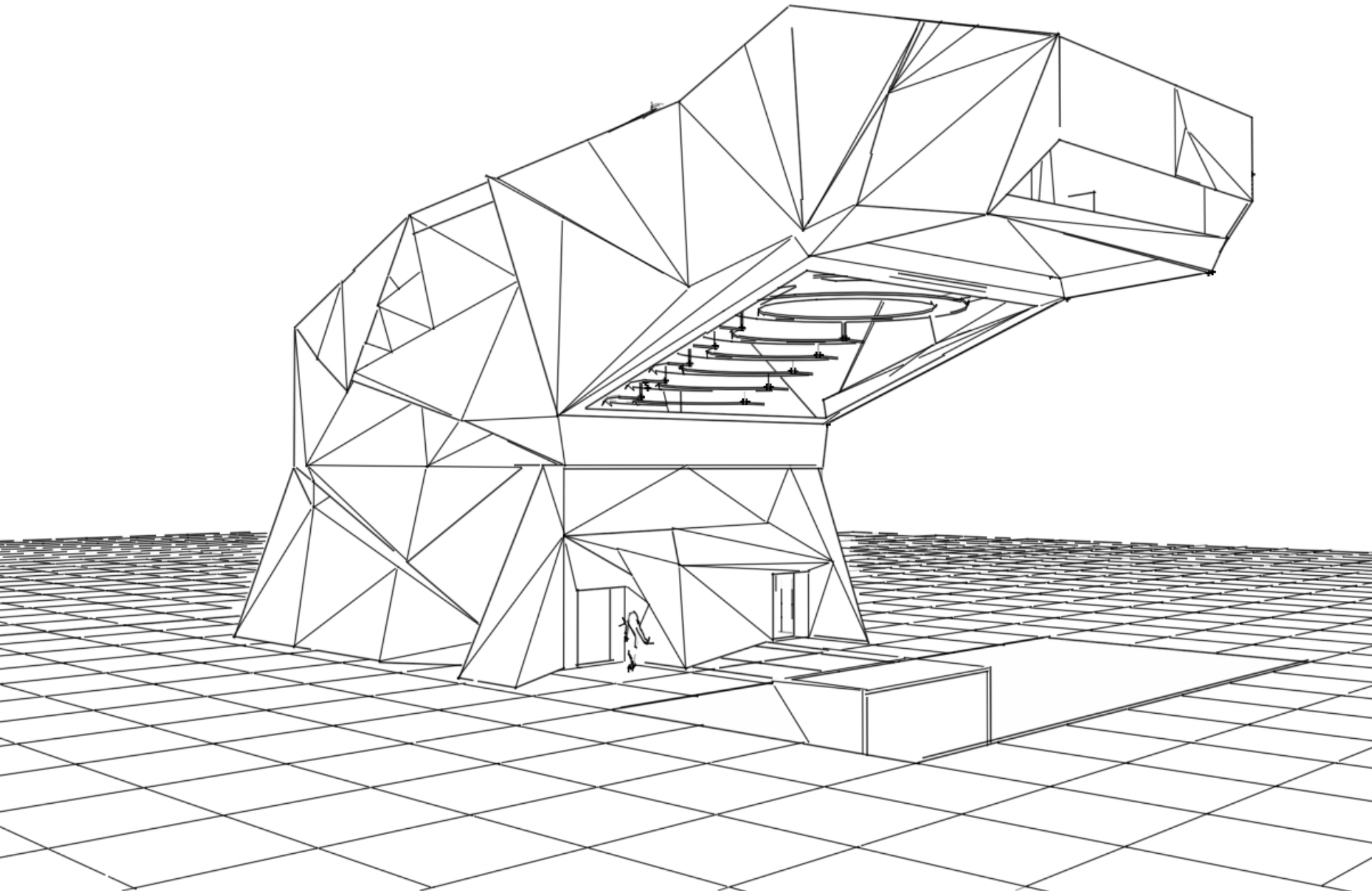


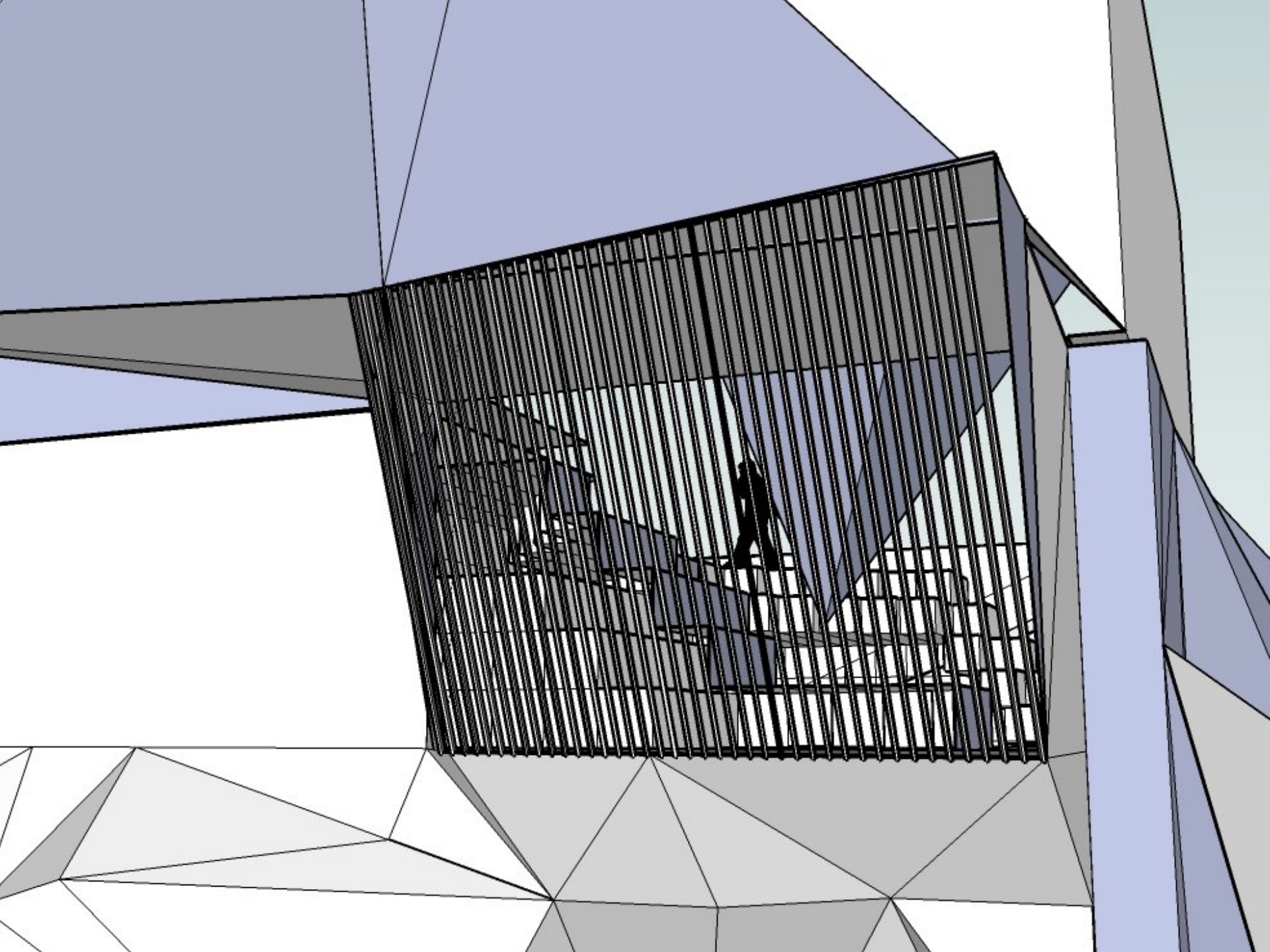








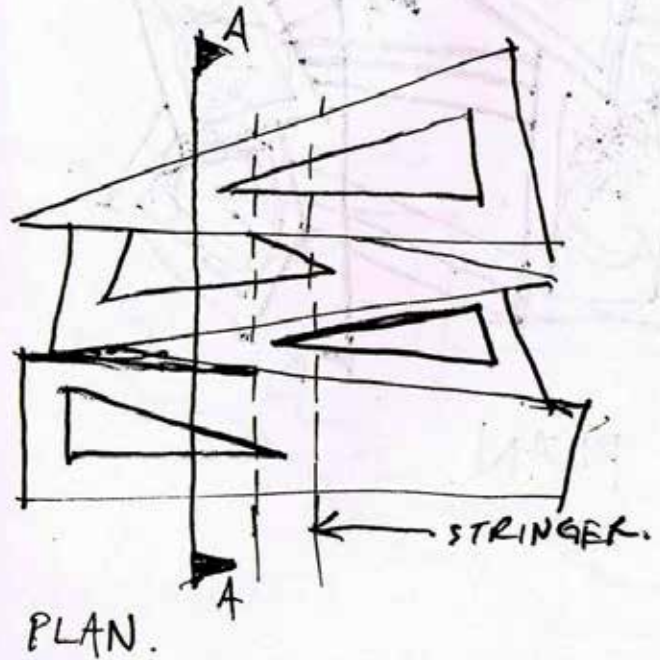
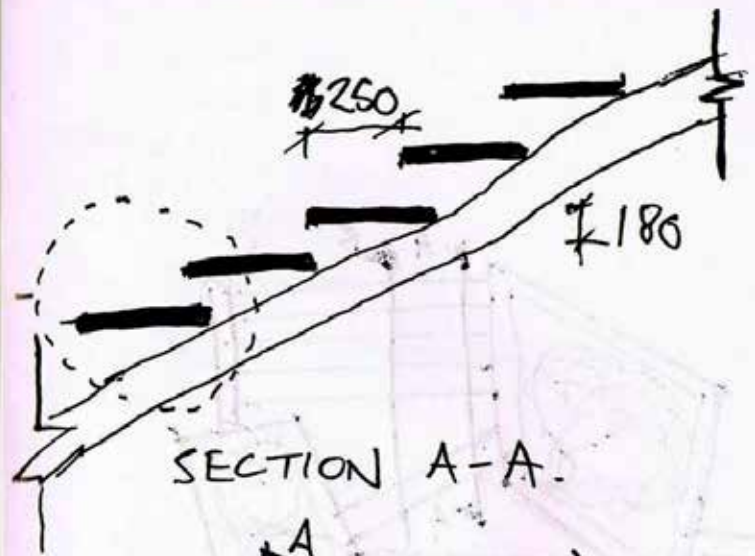
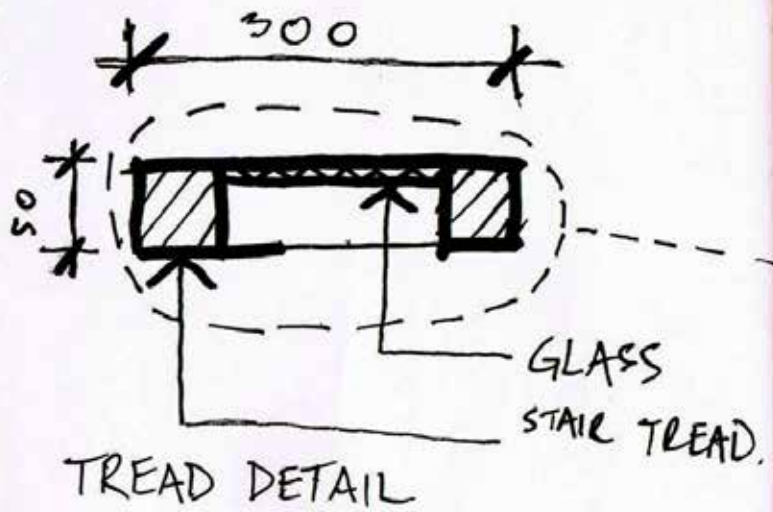




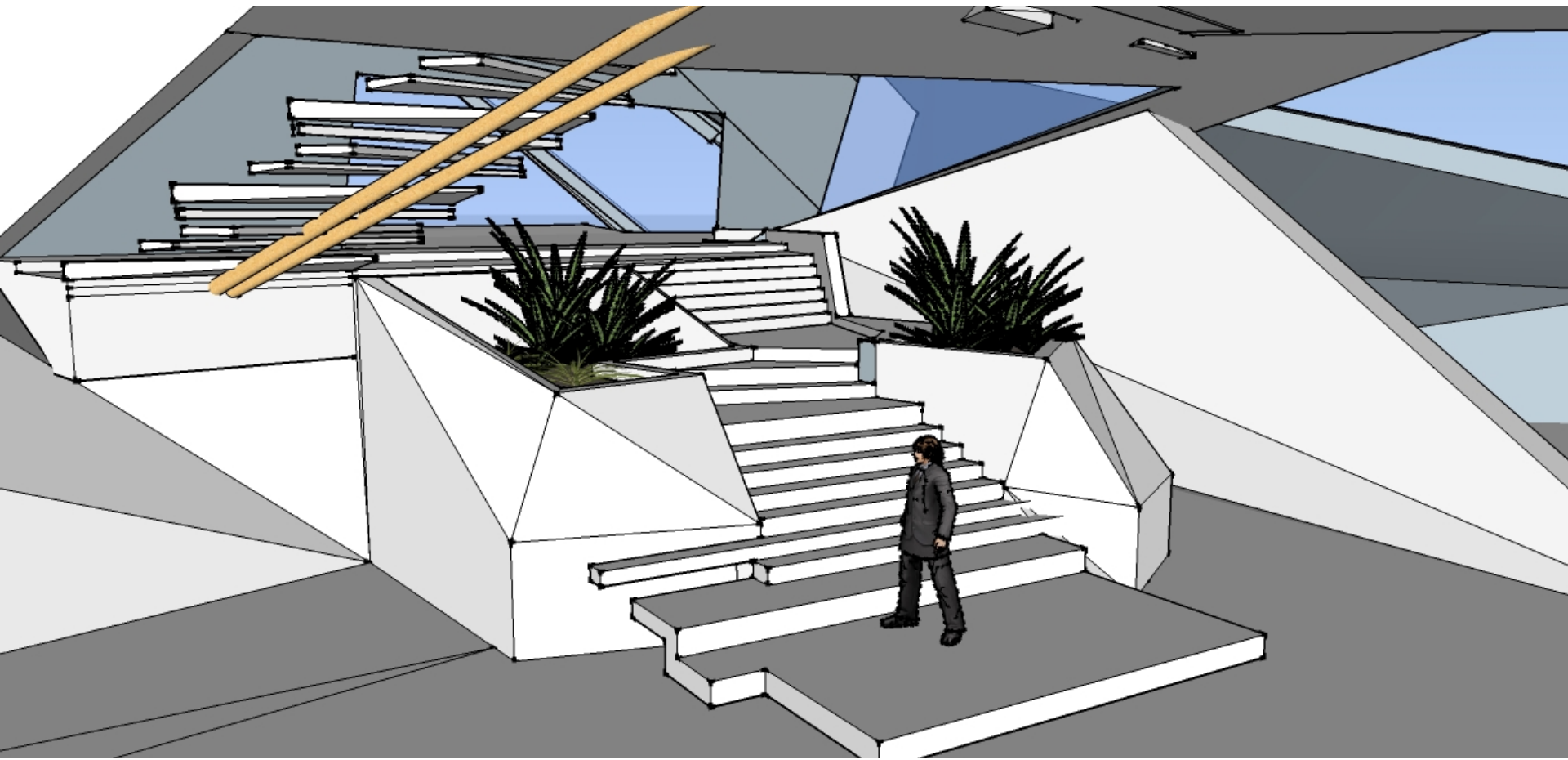


**HAYDEN**

**WOOLDRIDGE**

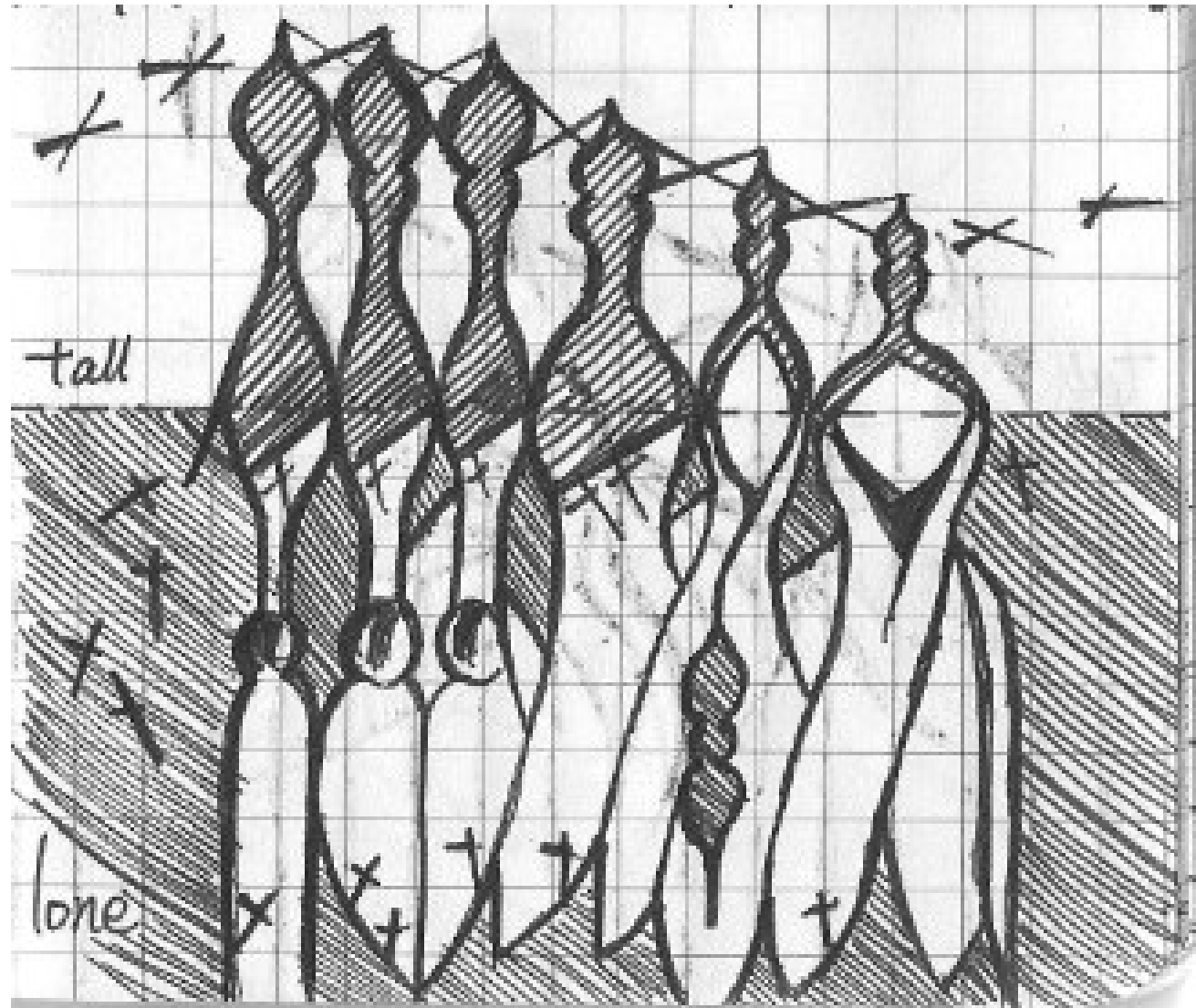


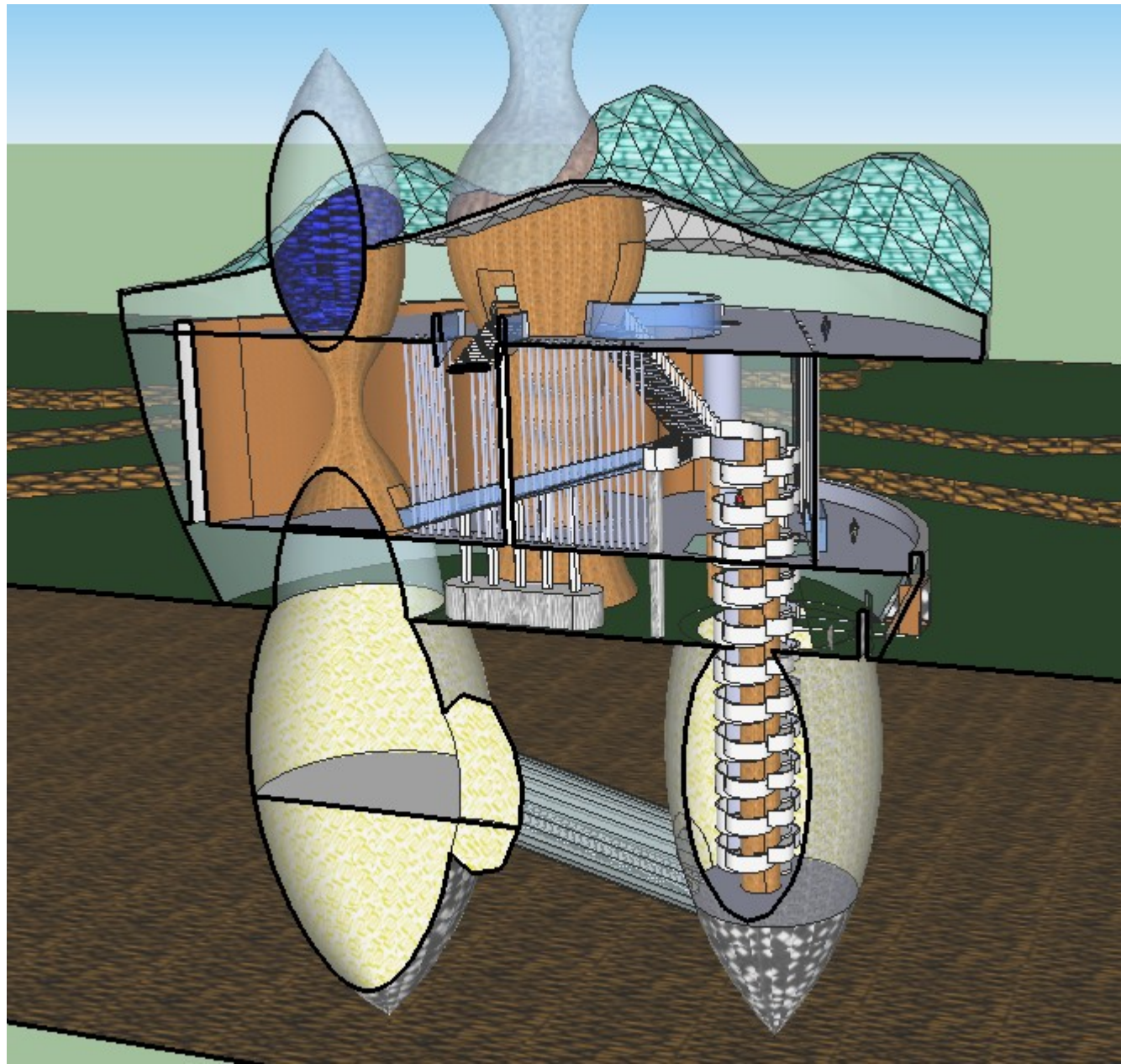




**LI QIAN**

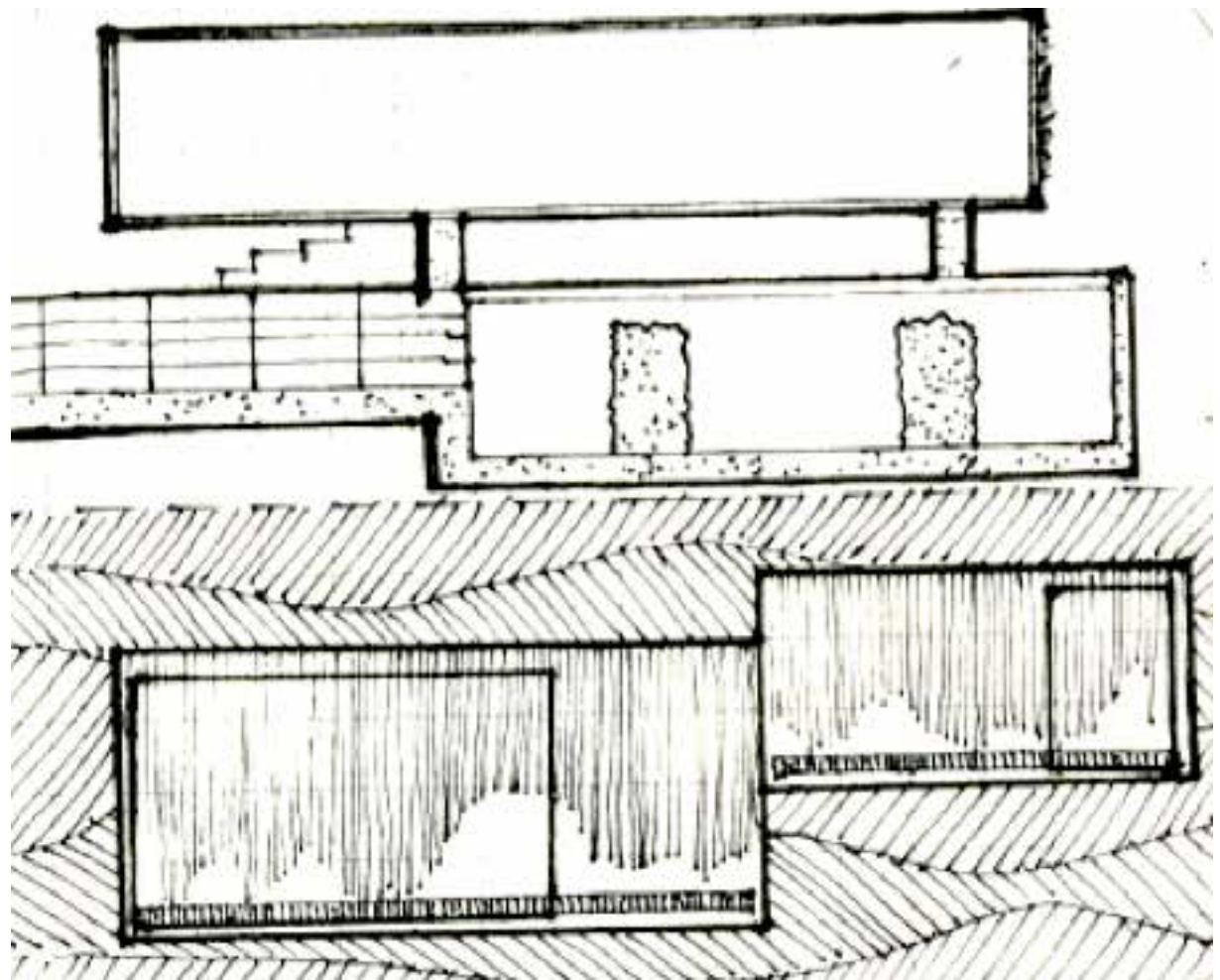








**REMI CRICK**

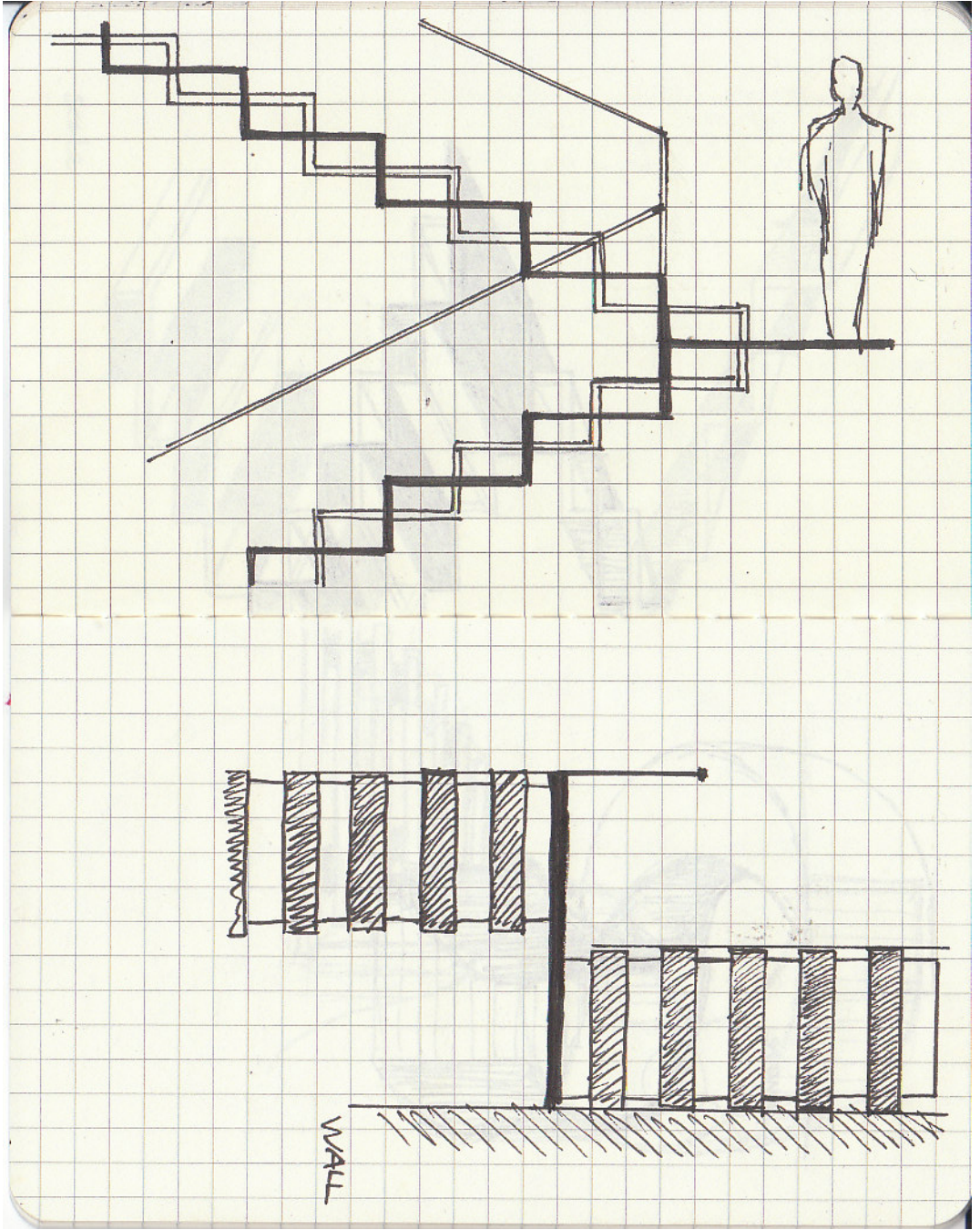


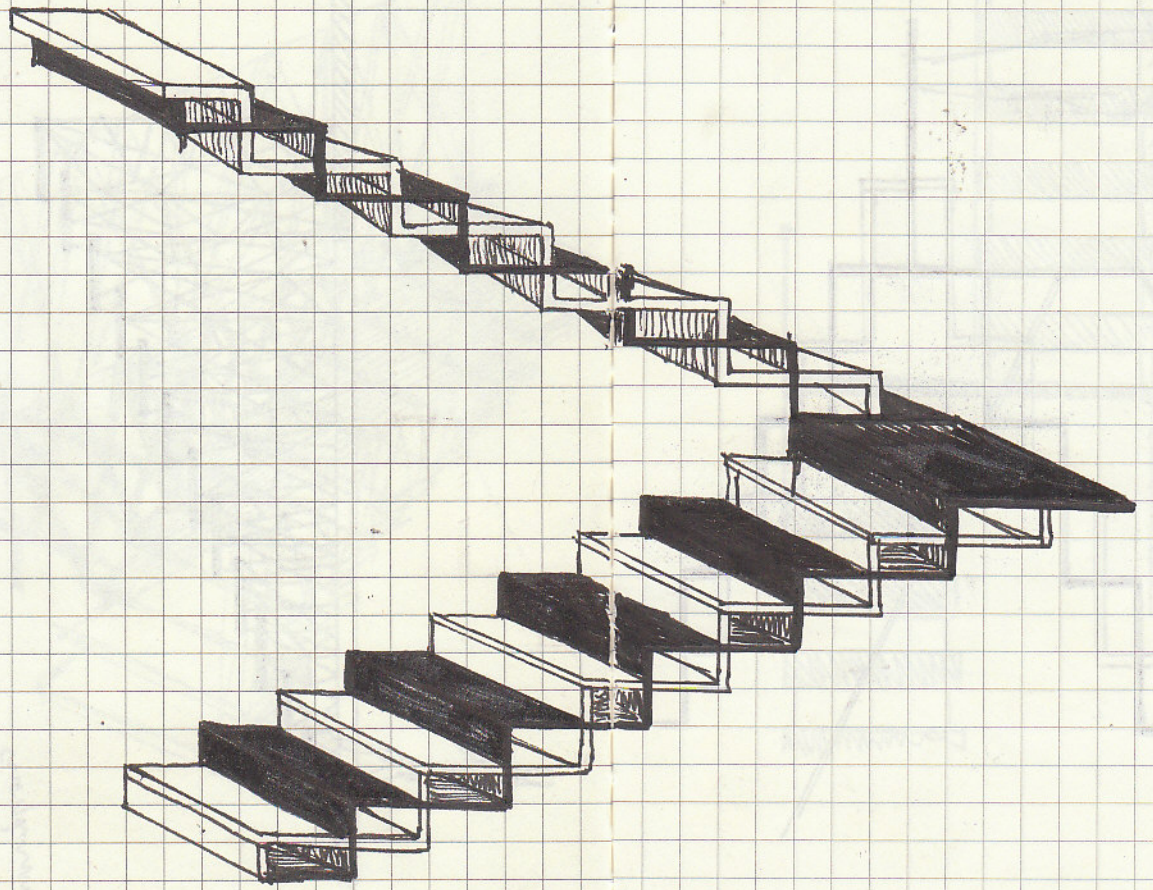




**YIMING SONG**

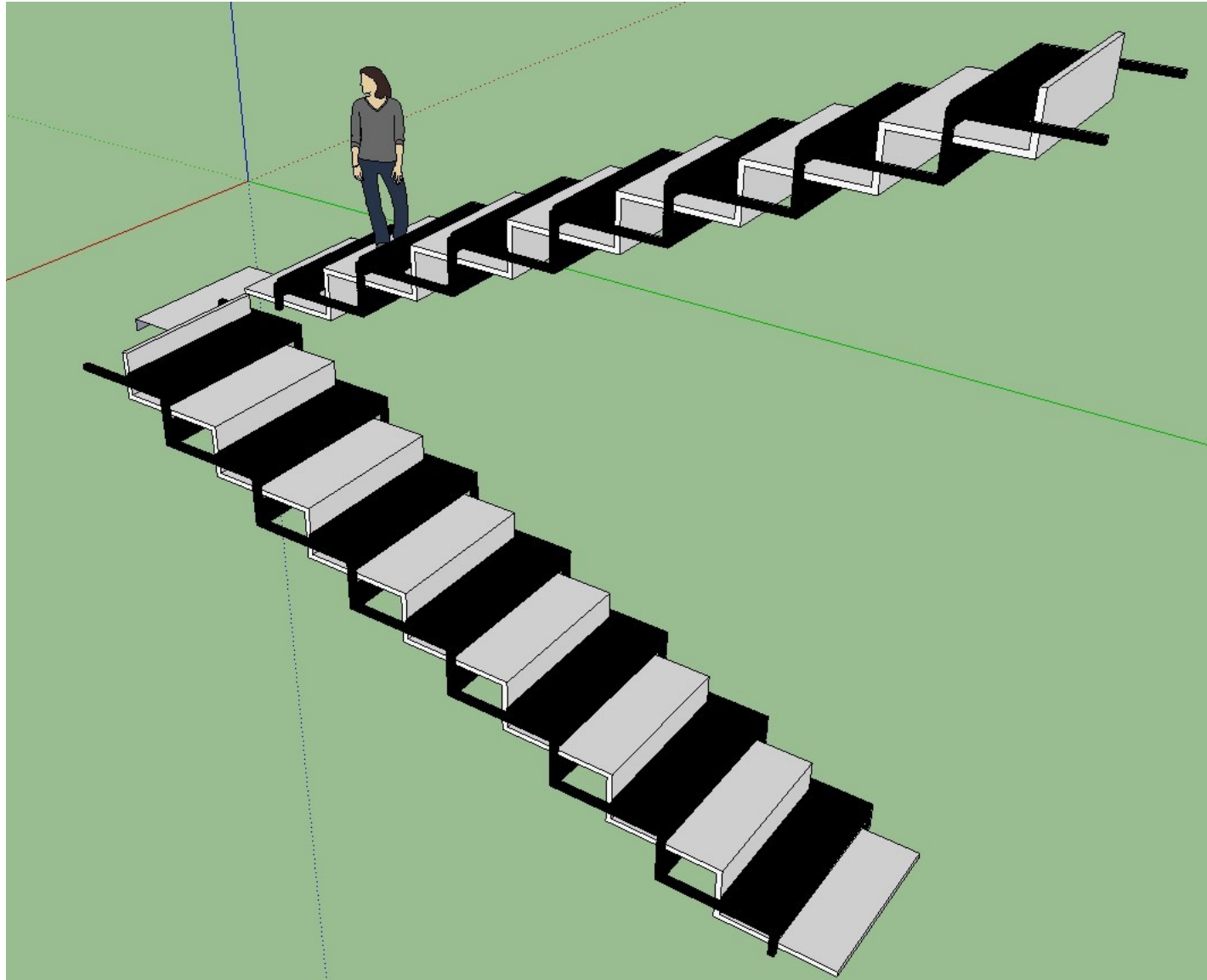




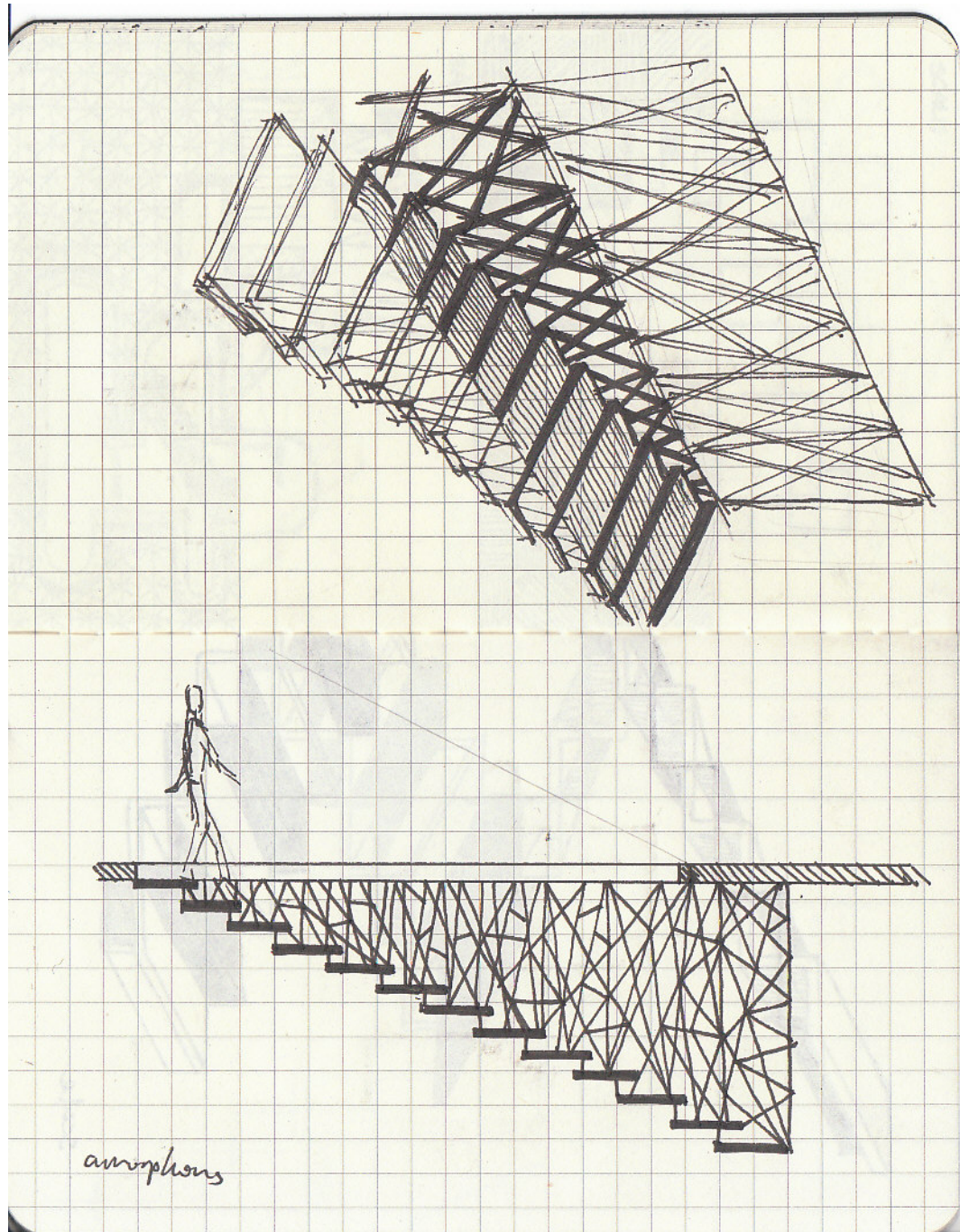


scale

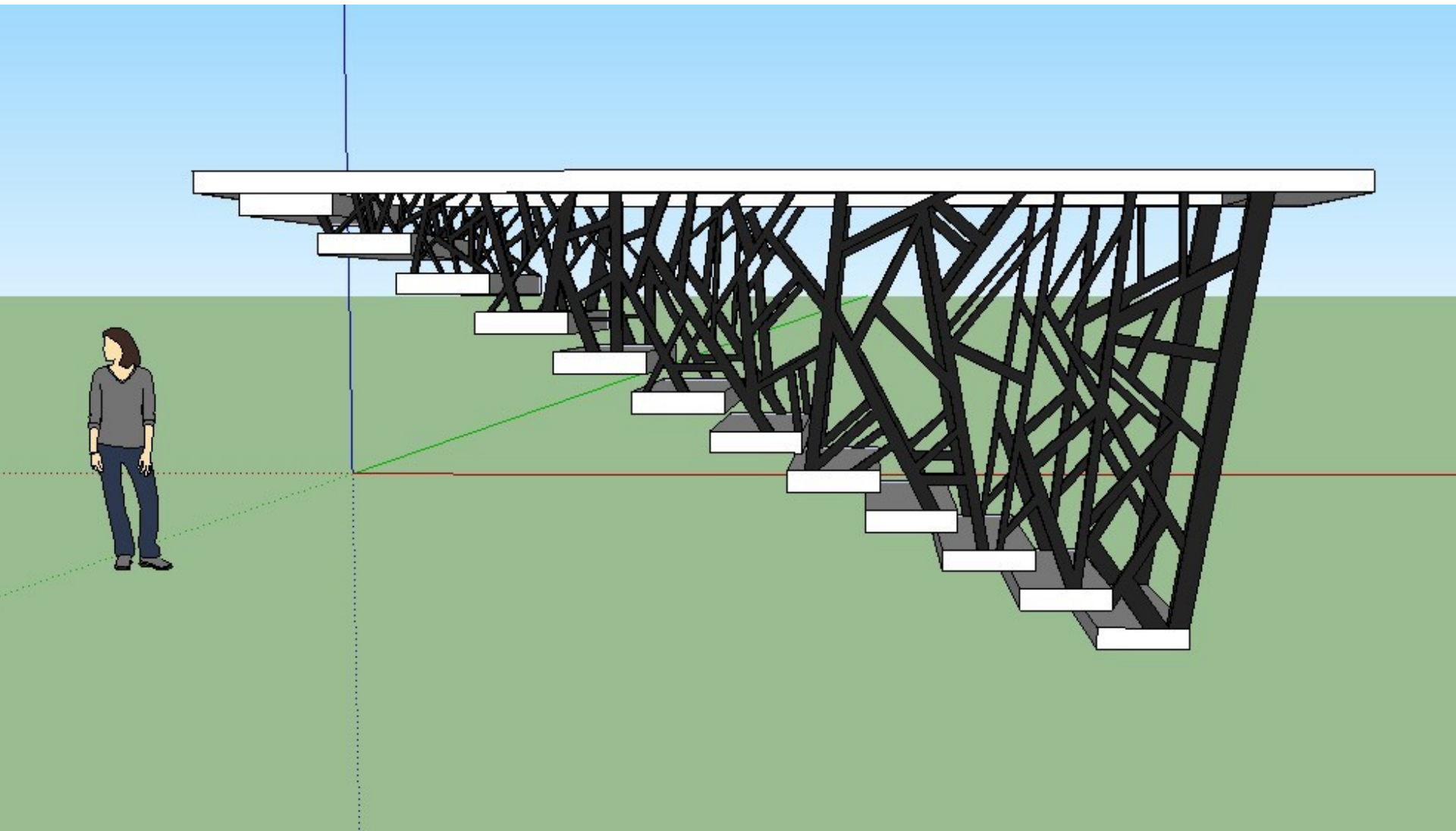








amorphous





# TODAY IN STUDIO

**Note:** Throughout the class students will be demonstrating modeling techniques using Google Sketchup.

**1.** Using the scheme you developed in SketchUp (and inspired by the stairs shown in the lecture) design two sets of stairs; one that goes from the above ground studio down to the showroom space and a second that comes from the below ground studio up to the showroom space.

**2.** Represent each stair with at least 2 sections. Keep all the notes, details and sections relating to each stair on one pair of facing pages. Or on two screens if you are using an iPhone, iPad or similar device.

**3.** In consultation with your tutor take another one of the sections created in the first studio session and design two sets of stairs for that scheme. Represent each of these new stairs with at least 2 sections.

By the end of the studio session you will have at least 8 sections (representing 4 sets of stairs).

**QUESTIONS?**